
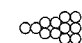

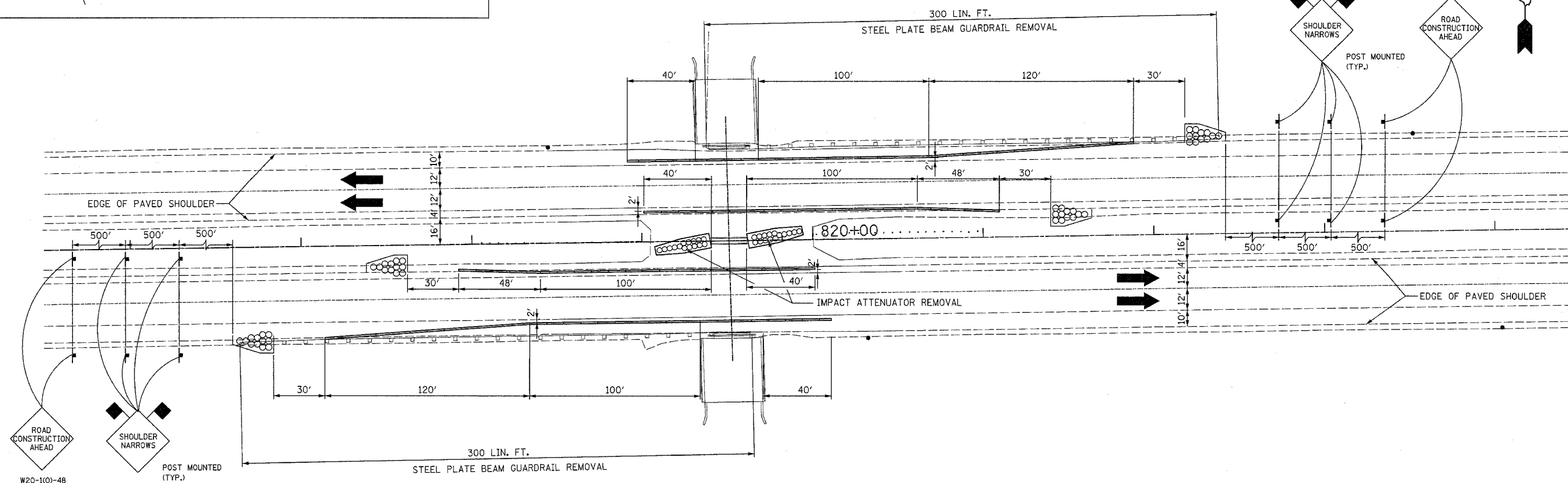


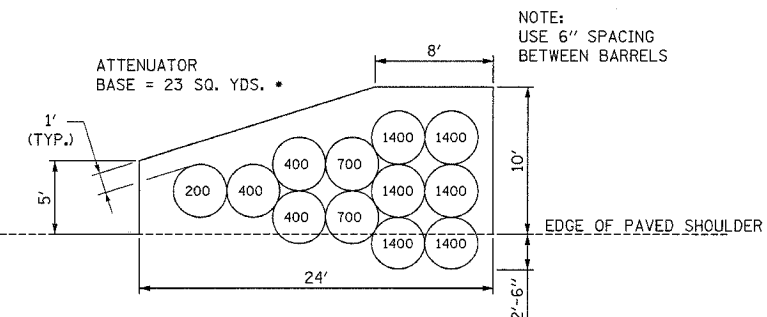
F.A.I. RTE.	SECTION	COUNTY	TOTAL SHEETS	SHEET NO.
80	32-2HBR	GRUNDY	171	88
STA.		TO STA.		
FED. ROAD DIST. NO.	ILLINOIS	FED. AID PROJECT		
CONTRACT NO. 66412				

LEGEND

 INDICATES TEMP. CONC. BARRIERS
 IMPACT ATTENUATORS, TEMPORARY (NON-REDIRECTIVE), TEST LEVEL 3
 INDICATES 18"x18" ORANGE FLAG



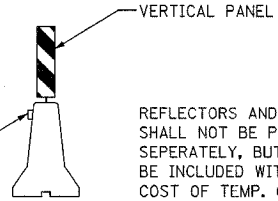
IMPACT ATTENUATORS, TEMPORARY (NON-REDIRECTIVE), TEST LEVEL 3



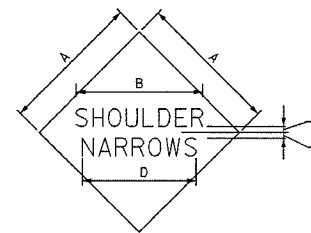
NOTE: USE 6" SPACING BETWEEN BARRELS

REMOVAL OF ATTENUATOR BASE IS INCIDENTAL

VERTICAL PANEL AND PRISMATIC BARRIER SHALL BE PLACED AT 20' CENTERS IN TAPER AREA AND 50' CENTERS IN TANGENT AREA



REFLECTORS AND PANELS SHALL NOT BE PAID FOR SEPARATELY, BUT SHALL BE INCLUDED WITH THE COST OF TEMP. CONC. BARRIERS.



SPECIAL SIGN

COLOR: LEGEND AND BORDER - BLACK NON-REFLECTORIZED
BACKGROUND - ORANGE REFLECTORIZED

SIGN SIZE	DIMENSIONS				
	A	B	C	D	E
48X48	48.0	33.5	3.0	35.7	2.0

SIGN SIZE	SERIES		MARGIN	MARGIN	BLANK STD.
	1	2			
48X48	6C	6C	0.8	1.2	84 48D

ALL DIMENSIONS IN INCHES

REVISIONS	
NAME	DATE

ILLINOIS DEPARTMENT OF TRANSPORTATION
**I-80 (F.A.I. 80) AT
 SENECA ROAD (F.A.P. 623)
 GRUNDY COUNTY**
 PLACEMENT OF TEMPORARY
 CONCRETE BARRIERS

SCALE: 1" = 30'
DATE 08/16/04

DRAWN BY NMR
CHECKED BY DJL