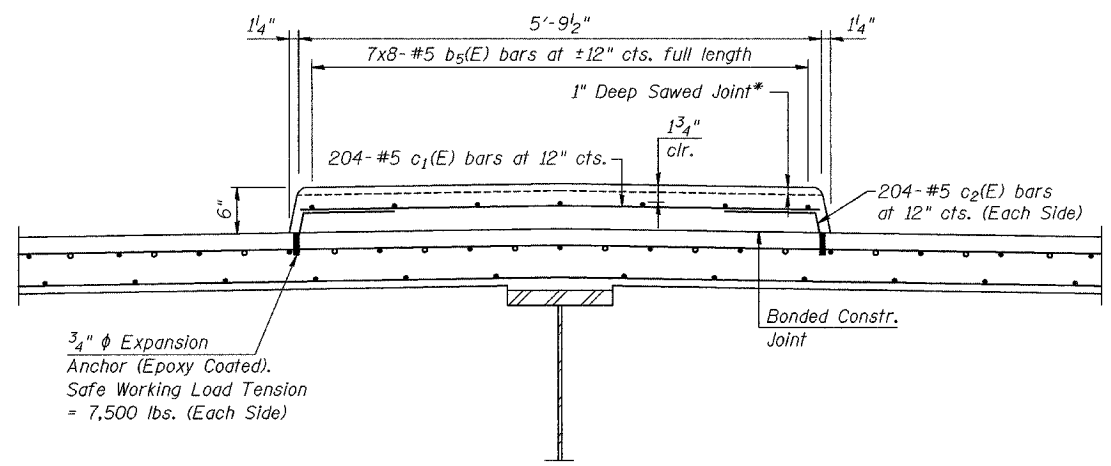


F.A.P.	SECTION	COUNTY	TOTAL SHEETS	SHEET NO.
623	32-2 HBR	GRUNDY	171	100
STA.		TO STA.		
FED. ROAD DIST. NO.		ILLINOIS	FED. AID PROJECT	
CONTRACT NO. 66412				
SHEET S7 OF S20				

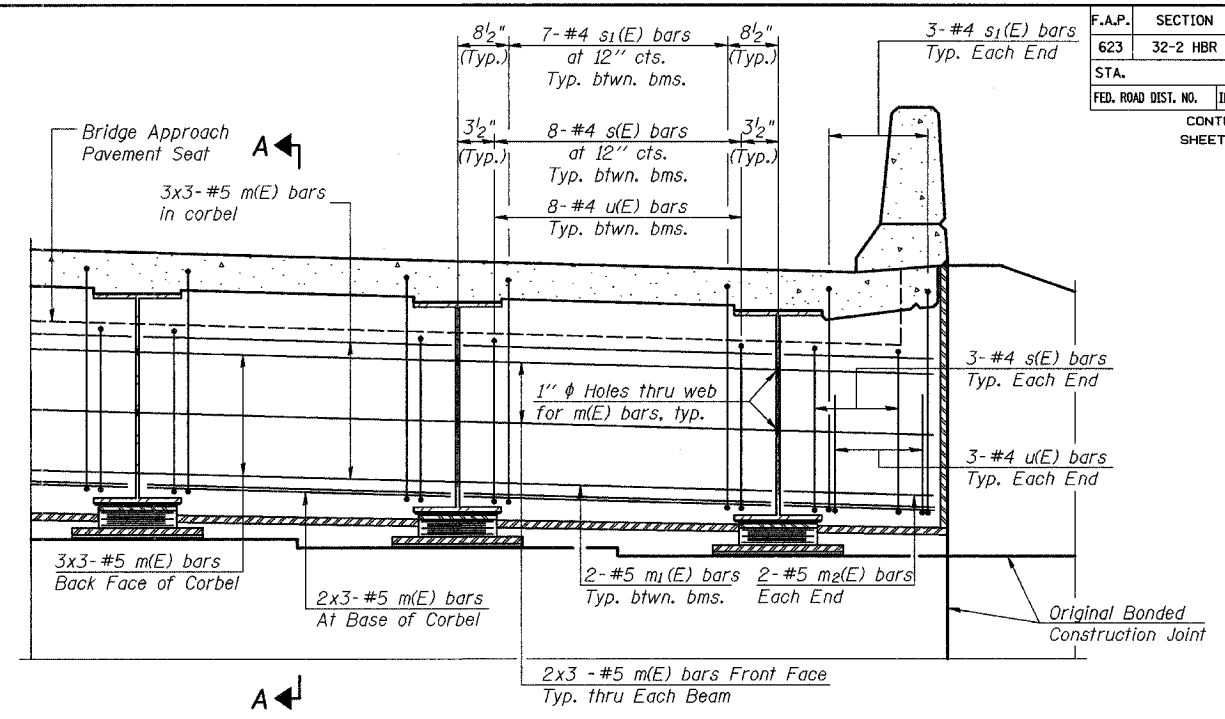


SUPERIMPOSED MEDIAN

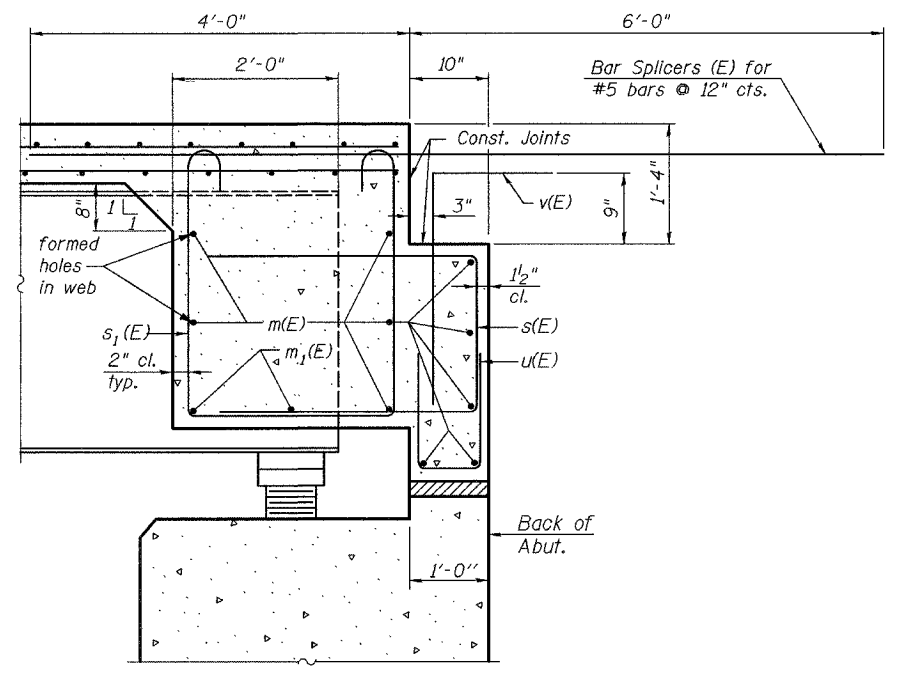
* 1" Deep Sawed Joints located at same locations as the aluminum sheets in the parapets detailed on Sheet S8.

Notes:
 Reinforcement bars in diaphragm and superimposed median are billed with Superstructure on Sheet S8 of S20.
 Concrete in diaphragm is included with Concrete Superstructure on Sheet S8 of S20.
 For details of bars c (E), s(E) & s₁(E) see Sheet S8 of S20.
 The s(E) and s₁(E) bars shall be placed parallel to the girder webs. Spacing for these bars shall be at right angles to the girder.
 For Anchor Bolt Details see Sheet S12 of S20.
 For Bar Splicer Details See Sheet S17 of S20.

MIN. BAR LAP
 #4 bar = 1'-8"
 #5 bar = 2'-2"
 #6 bar = 2'-9"



DIAPHRAGM ELEVATION AT ABUTMENT



SECTION A-A

Louis Berger & Associates, Inc.
 1001 Elm Street, Suite 300
 Manchester, NH 03101

REVISIONS	
NAME	DATE

ILLINOIS DEPARTMENT OF TRANSPORTATION
SENECA ROAD
 OVER F.A.I. 80
 F.A.P. 623 SEC. 32-2 HBR GRUNDY CO.
 STRUCTURE No. 032-0114
 STATION 19+49.99
 SUPERSTRUCTURE DETAILS I
 SCALE: NONE
 DATE: OCTOBER, 2005
 DRAWN BY: NJH
 CHECKED BY: JLG