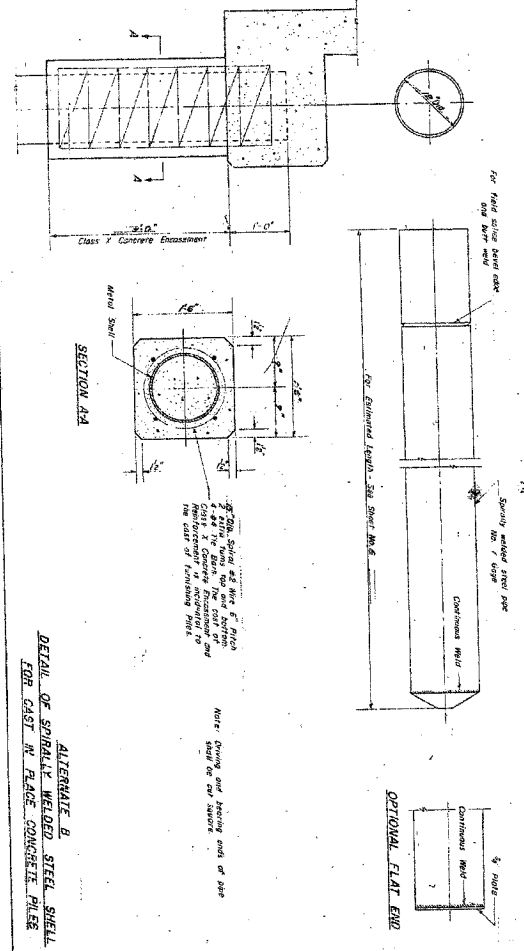


66412
168

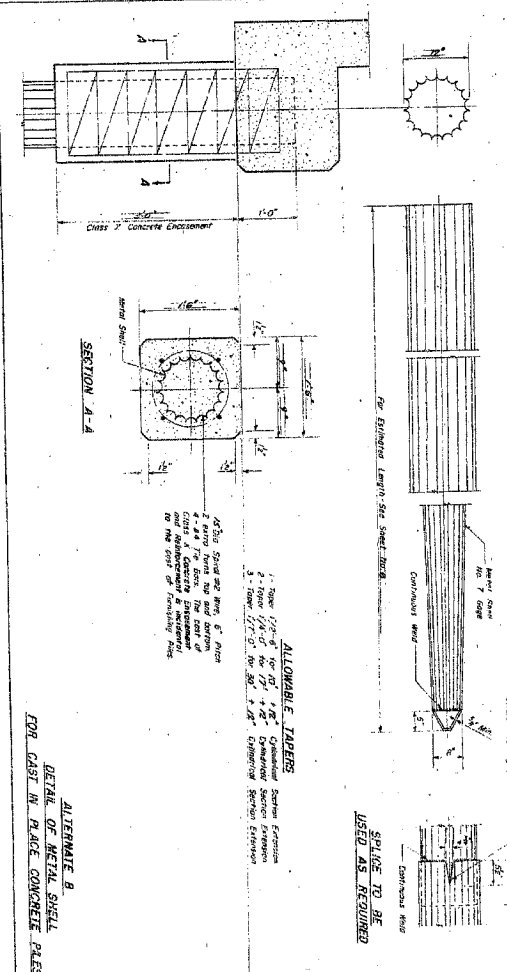
STATE OF ILLINOIS
DEPARTMENT OF PUBLIC WORKS & BUILDINGS
DIVISION OF HIGHWAYS

PAI-90

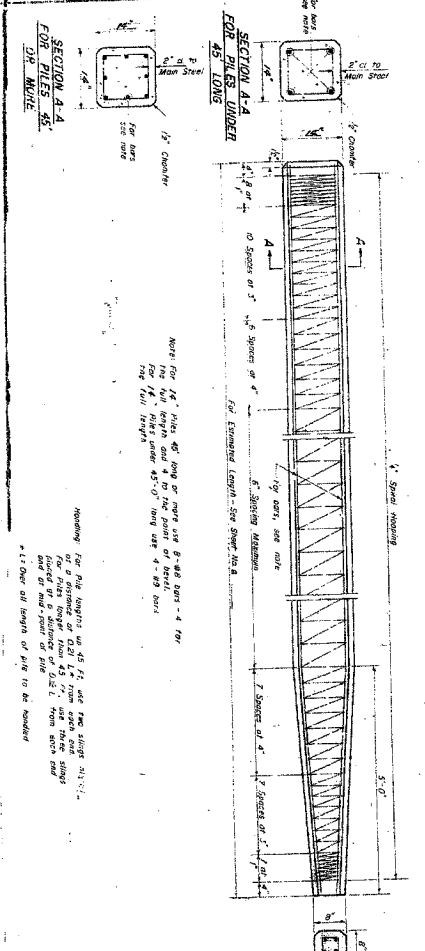
NO. 1	NO. 2	NO. 3	NO. 4	NO. 5	NO. 6	NO. 7	NO. 8	NO. 9	NO. 10
1	2	3	4	5	6	7	8	9	10
1	2	3	4	5	6	7	8	9	10



ALTERNATE B
DETAIL OF SPIRAL WELDED STEEL SHELL
FOR CAST IN PLACE CONCRETE PIERS



ALTERNATE B
DETAIL OF METAL SHELL
FOR CAST IN PLACE CONCRETE PIERS



ALTERNATE A
DETAIL OF PRECAST CONCRETE PIERS



ALTERNATE A
DETAIL OF PRECAST CONCRETE PIERS

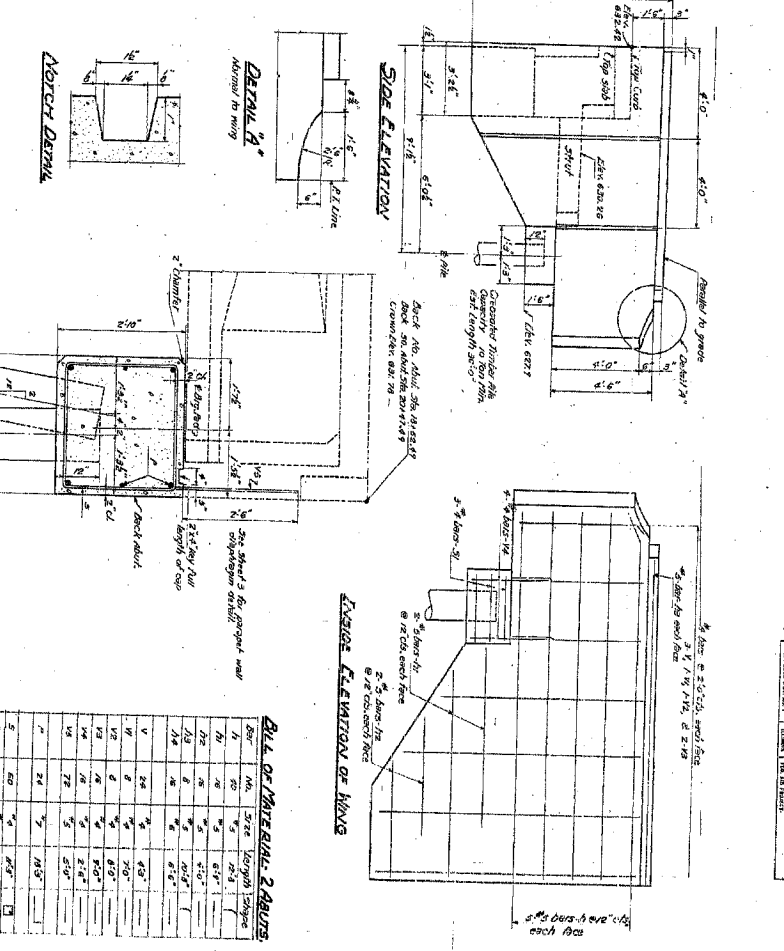
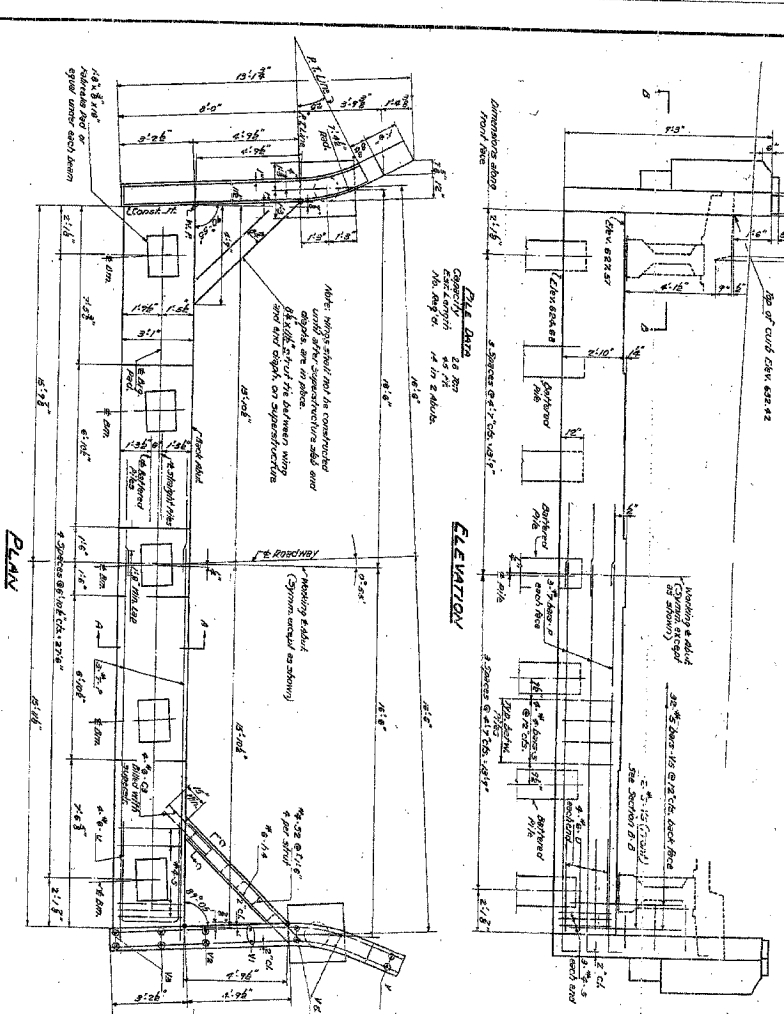
DESIGNED BY: *[Signature]*
CHECKED BY: *[Signature]*
DATE: FEB 24 11 58
PROJECT: *[Signature]*
DRAWN BY: *[Signature]*
APPROVED BY: *[Signature]*

DESIGNED BY: *[Signature]*
CHECKED BY: *[Signature]*
DATE: FEB 24 11 58
PROJECT: *[Signature]*
DRAWN BY: *[Signature]*
APPROVED BY: *[Signature]*

STATE OF ILLINOIS
DEPARTMENT OF PUBLIC WORKS & BUILDINGS
DIVISION OF HIGHWAYS

PAI-90

NO. 1	NO. 2	NO. 3	NO. 4	NO. 5	NO. 6	NO. 7	NO. 8	NO. 9	NO. 10
1	2	3	4	5	6	7	8	9	10
1	2	3	4	5	6	7	8	9	10



LIST OF MATERIALS - 2 SHEETS

NO.	QTY.	DESCRIPTION	UNIT	PRICE	TOTAL
1	1	CONCRETE	CU YD	1.00	1.00
2	1	STEEL	TON	100.00	100.00
3	1	FORMWORK	SQ YD	5.00	5.00
4	1	REINFORCEMENT	TON	100.00	100.00
5	1	CONCRETE	CU YD	1.00	1.00
6	1	STEEL	TON	100.00	100.00
7	1	FORMWORK	SQ YD	5.00	5.00
8	1	REINFORCEMENT	TON	100.00	100.00
9	1	CONCRETE	CU YD	1.00	1.00
10	1	STEEL	TON	100.00	100.00
11	1	FORMWORK	SQ YD	5.00	5.00
12	1	REINFORCEMENT	TON	100.00	100.00
13	1	CONCRETE	CU YD	1.00	1.00
14	1	STEEL	TON	100.00	100.00
15	1	FORMWORK	SQ YD	5.00	5.00
16	1	REINFORCEMENT	TON	100.00	100.00
17	1	CONCRETE	CU YD	1.00	1.00
18	1	STEEL	TON	100.00	100.00
19	1	FORMWORK	SQ YD	5.00	5.00
20	1	REINFORCEMENT	TON	100.00	100.00

DESIGNED BY: *[Signature]*
CHECKED BY: *[Signature]*
DATE: FEB 24 11 58
PROJECT: *[Signature]*
DRAWN BY: *[Signature]*
APPROVED BY: *[Signature]*

DESIGNED BY: *[Signature]*
CHECKED BY: *[Signature]*
DATE: FEB 24 11 58
PROJECT: *[Signature]*
DRAWN BY: *[Signature]*
APPROVED BY: *[Signature]*

NOBLET & SOUTHWORTH ASSOCIATES
CIVIL ENGINEERS
GRANDVIEW COUNTY
STATION D1713105