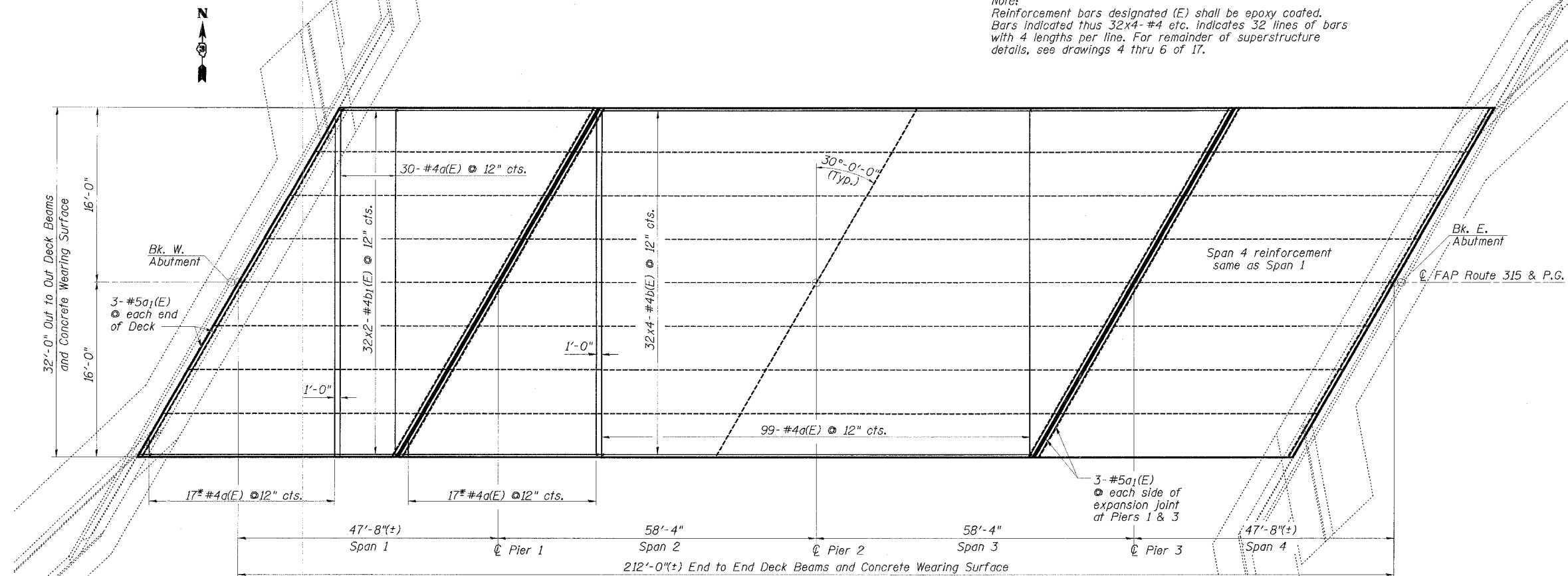


STATE OF ILLINOIS
DEPARTMENT OF TRANSPORTATION

Note:
Reinforcement bars designated (E) shall be epoxy coated.
Bars indicated thus 32x4-#4 etc. indicates 32 lines of bars with 4 lengths per line. For remainder of superstructure details, see drawings 4 thru 6 of 17.

ROUTE NO.	SECTION	COUNTY	TOTAL SHEETS	SHEET NO.
FAP 315	*	McLEAN	44	15
STA.	TO STA.			
FED. ROAD DIST. NO.		ILLINOIS	FED. AID PROJECT-	
*102X-BR-2		DWG. NO.	3 OF 17	

CONTRACT NO. 66584



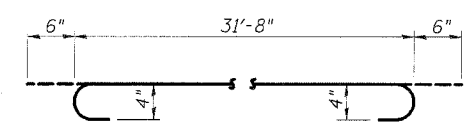
PLAN

MIN. BAR LAP
#4 bar = 1'-8"

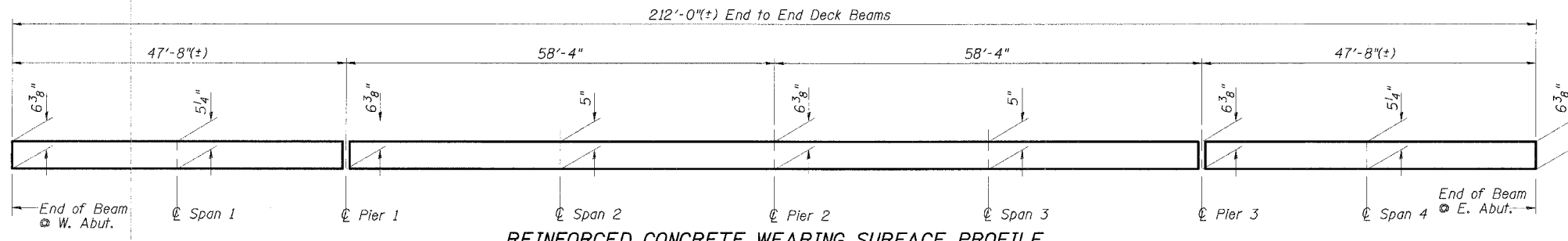
*Order a(E) bars full length. Cut to fit skew and use remainder of bars in opposite end of span.

CONCRETE WEARING SURFACE
BILL OF MATERIAL

Bar	No.	Size	Length	Shape
a(E)	210	#4	32'-8"	U
a1(E)	18	#5	36'-6"	—
b(E)	128	#4	30'-4"	—
b1(E)	128	#4	24'-6"	—
Reinforcement Bars, Epoxy Coated			Pound	9960
Concrete Wearing Surface, 5"			Sq. Yd.	753
Bridge Deck Grooving			Sq. Yd.	707
Protective Coat			Sq. Yd.	753



BAR a(E)



REINFORCED CONCRETE WEARING SURFACE PROFILE

(At centerline of roadway)

Note:
Greater thickness is required at edges of superstructure to conform to cross slopes shown on Dwg. 4 and 5 of 17

ESCA
CONSULTANTS, INC.

DESIGNED BY:	ELH	6/05
DRAWN BY:	DWH	6/05
CHECKED BY:	ELH	10/05
APPROVED BY:	RDP	10/05

SUPERSTRUCTURE
US 136 OVER BRANCH OF SALT CREEK
FAP ROUTE 315 - SECTION 102X-BR-2
McLEAN COUNTY
STATION 616+99.00
STRUCTURE NO. 057-0185