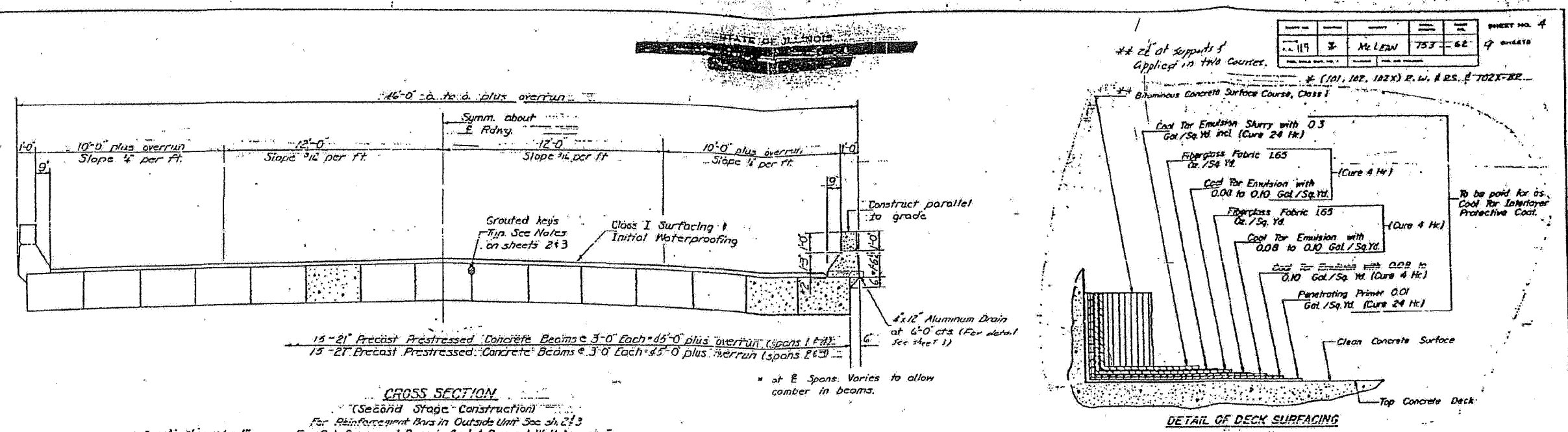
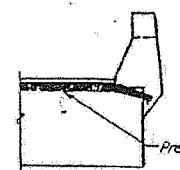
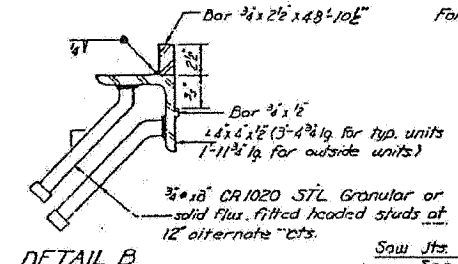


FAP RTE	SECTION	COUNTY	TOTAL SHEETS	SHEET NO.
315	102X-BR-2	McLEAN	44	33
STA.		TO STA.		
FED. ROAD DIST. NO.		ILLINOIS FED. AID PROJECT		

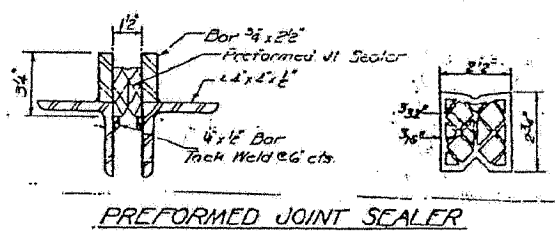
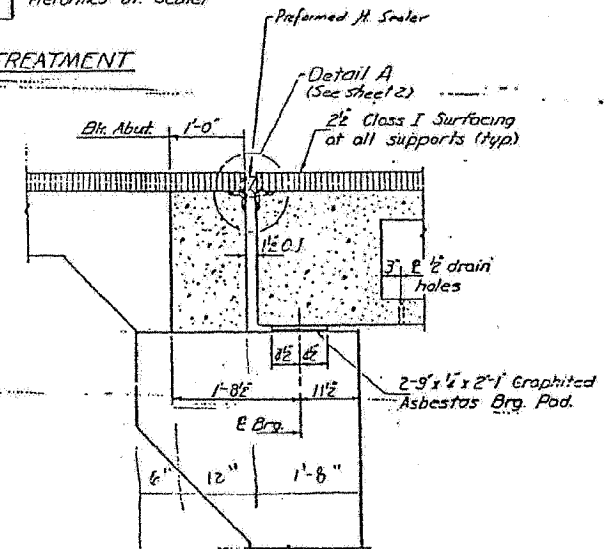
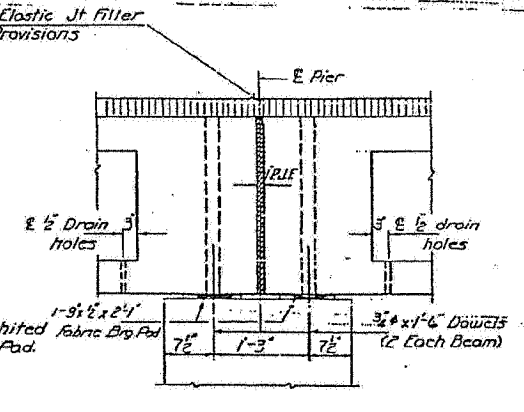
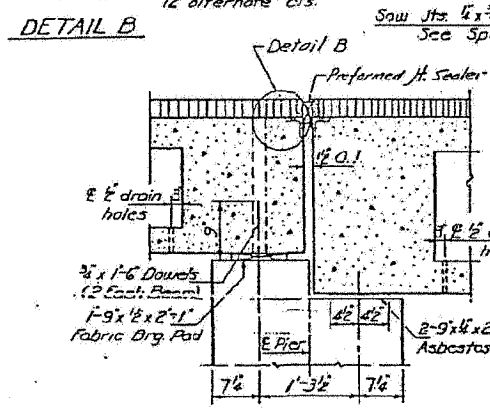


**CROSS SECTION**  
(Second Stage Construction)

For Reinforcement Bars in Outside Unit See sh. 2 & 3  
For Reinforcement Bars in Curb & Parapet Wall See sh. 5



**END OF SEALER TREATMENT**



DESIGNED <i>W. H. Hays</i>	EXAMINED <i>[Signature]</i>
CHECKED <i>[Signature]</i>	PASSED <i>[Signature]</i>
DRAWN <i>C. E. Wilkins</i>	DATE <i>SEPT. 1 1970</i>
CHECKED <i>[Signature]</i>	BY <i>[Signature]</i>

**SUPERSTRUCTURE DETAILS**  
FA. RT. 119 SEC. 102X-BR  
McLEAN COUNTY  
STA. 616+99