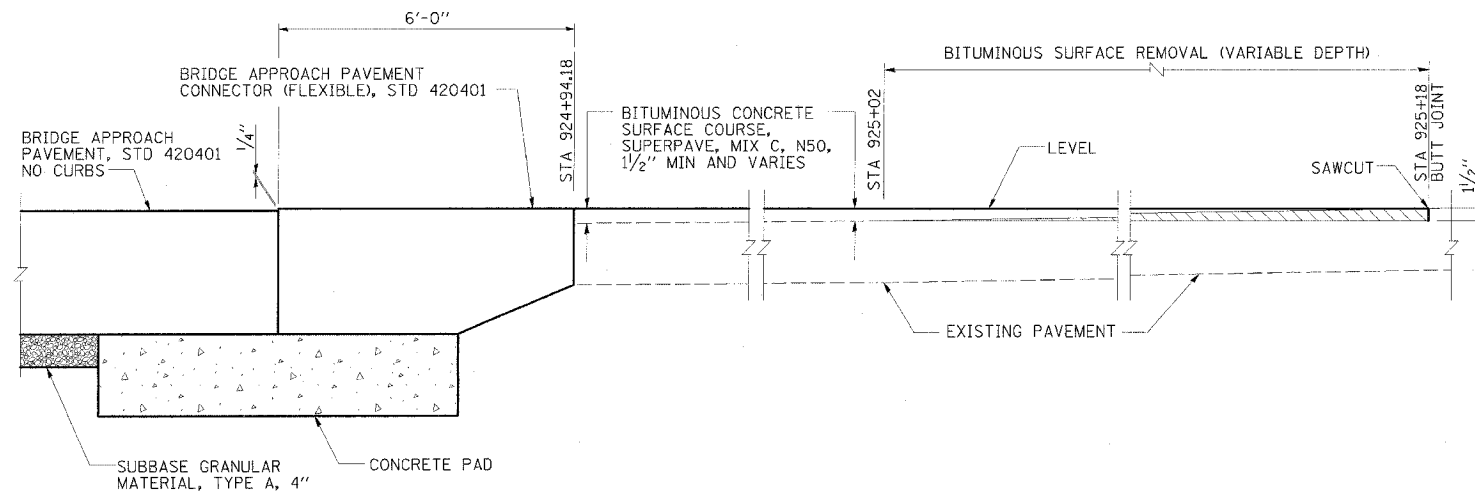
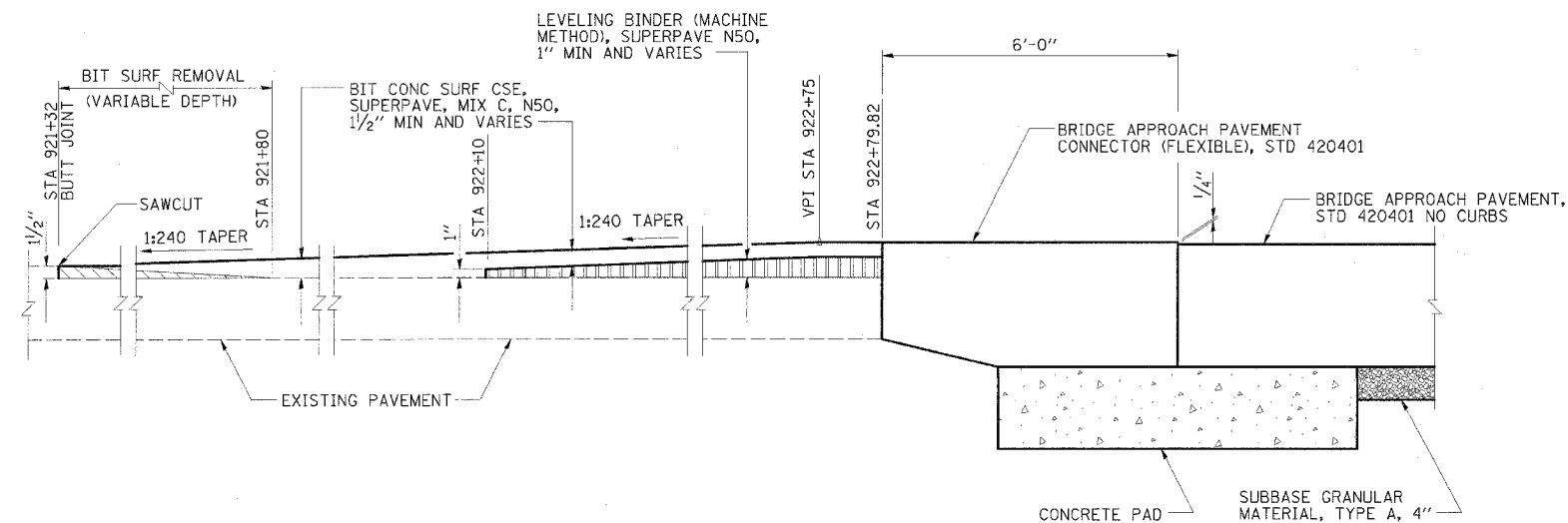


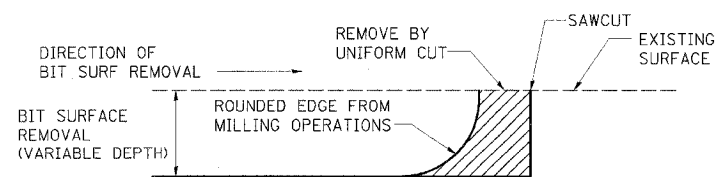
FAP RTE	SECTION	COUNTY	TOTAL SHEETS	SHEET NO.
697	17BR	FORD	40	12
STA. TO STA.		TO STA.		
FED. ROAD DIST. NO.		ILLINOIS FED. AID PROJECT		



**BUTT JOINT SECTION**  
STA 924+94.18 TO STA 925+18



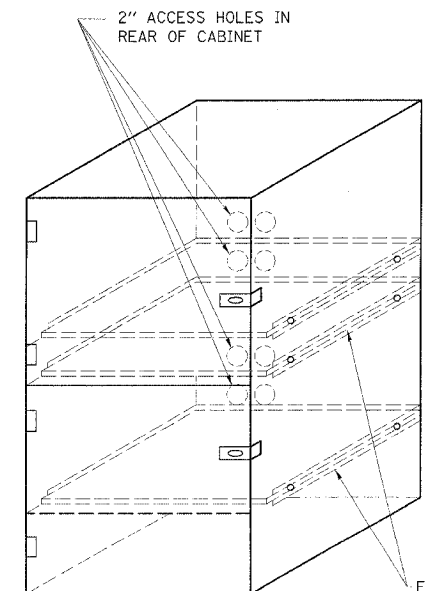
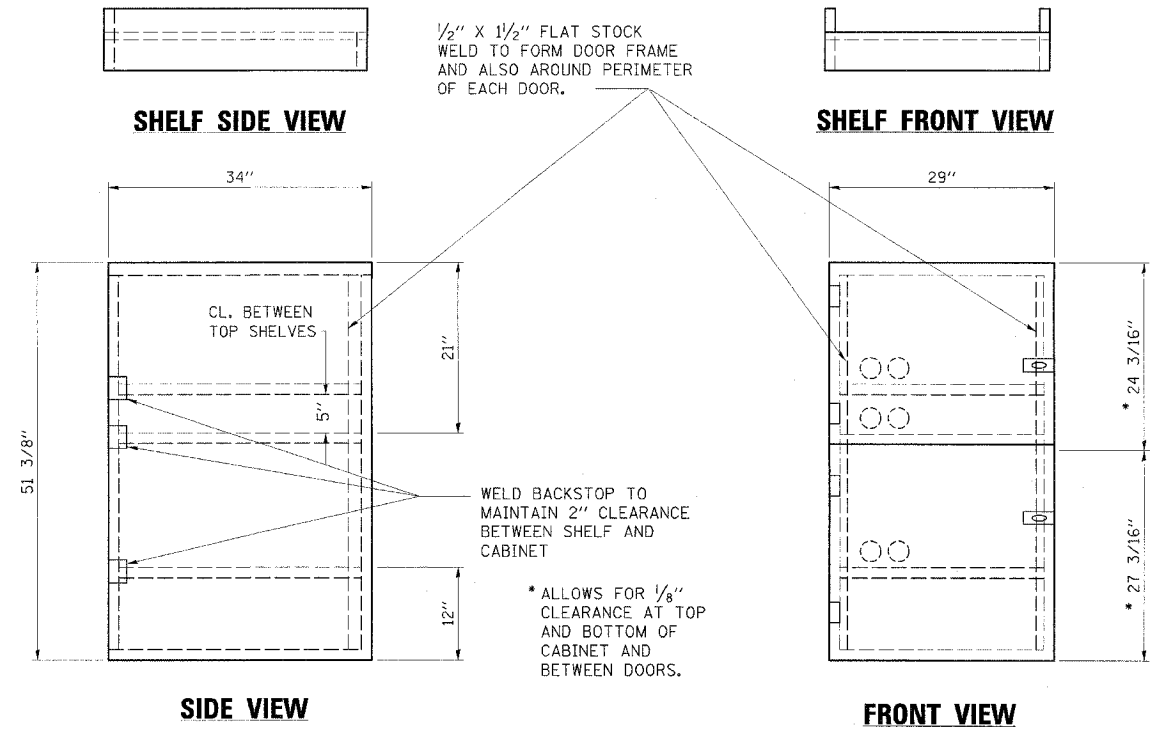
**BUTT JOINT SECTION**  
STA 921+32 TO STA 922+79.82



**DETAIL AT BUTT JOINT**

NOTE:  
WHEN MILLING OPERATIONS PRODUCE A ROUNDED EDGE, THEN A SAWCUT SHALL BE USED TO MANUFACTURE A PERPENDICULAR EDGE AS SHOWN IN THE DETAIL. THE COST OF ALL WORK SHOWN IN THE DETAIL IS INCLUDED IN BITUMINOUS SURFACE REMOVAL (VARIABLE DEPTH). THE ENGINEER SHALL BE THE SOLE JUDGE CONCERNING THE USE OF THIS DETAIL.

<b>ESCA</b> CONSULTANTS, INC.		
DESIGNED BY:	MTD	7/05
DRAWN BY:	CJG/HAG	7/05
CHECKED BY:	MTD	7/05
APPROVED BY:	RDP	8/05



- NOTES:
1. USE 16 GAUGE STEEL FOR CABINET.
  2. THE TOP SHELF SHALL SLIDE IN OR OUT WITH THE TOP DOOR OPEN.
  3. ALL HINGES AND HASPS WILL BE WELDED TO THE CABINET.
  4. ALL EDGES SHALL BE GROUND SMOOTH.
  5. TWO (2" DIA.) ACCESS HOLES WILL BE REQUIRED FOR EACH SHELF.
  6. CABINET SHALL BE PAINTED WITH TWO COATS OF FLAT PAINT.
  7. 2 EACH MATCHING KEY PADLOCKS, WITH 3 KEYS PROVIDED, MASTER MODEL 3 T OR EQUIVALENT.
  8. 4 EACH PLAIN STEEL, NON-REMOVABLE PIN, NO HOLE 4"x4" SQUARE CORNER HINGES TO BE WELDED ON.
  9. 2 EACH EXTRA HEAVY, PLAIN STEEL, FIXED STAPLE, NO HOLE, 7 1/4" HASPS TO BE WELDED ON.

**LOCKABLE COMPUTER CABINET**

**MISCELLANEOUS DETAILS**  
FAP RTE 697 (IL 9)  
SECTION 17BR  
FORD COUNTY