

BENCHMARK: Chiseled "Square" on top of Northeast Corner of Parapet, SN 027-0068
Elev. 746.42

EXISTING STRUCTURE: SN 027-0068 was originally built in 1971. The superstructure consists of 3 simple spans of 21" PPC deck beams on pile bent abutments and solid wall reinforced concrete piers on piles. The back-to-back abutments dimension measures 143'-7" while the out-to-out width measures 46'-0". The existing superstructure shall be removed and replaced. Road closure shall be used during construction.

No salvage

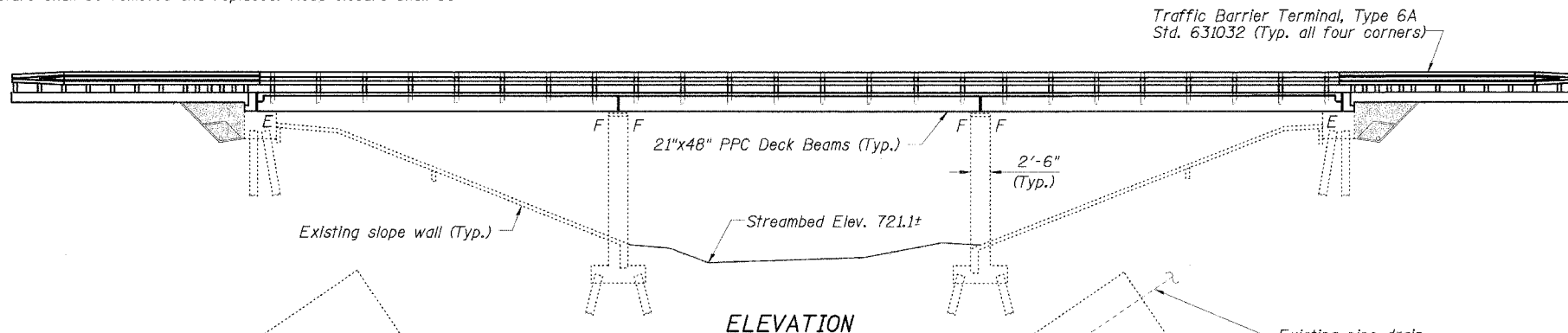
STATE OF ILLINOIS
DEPARTMENT OF TRANSPORTATION

ROUTE NO.	SECTION	COUNTY	TOTAL SHEETS	SHEET NO.
FAP 697	17BR	FORD	40	14
STA.	TO STA.		DWS. NO. 1 OF 15	
FED. ROAD DIST. NO.	ILLINOIS	FED. AID PROJECT-		

CONTRACT NO. 66604

STRUCTURE INDEX OF SHEETS

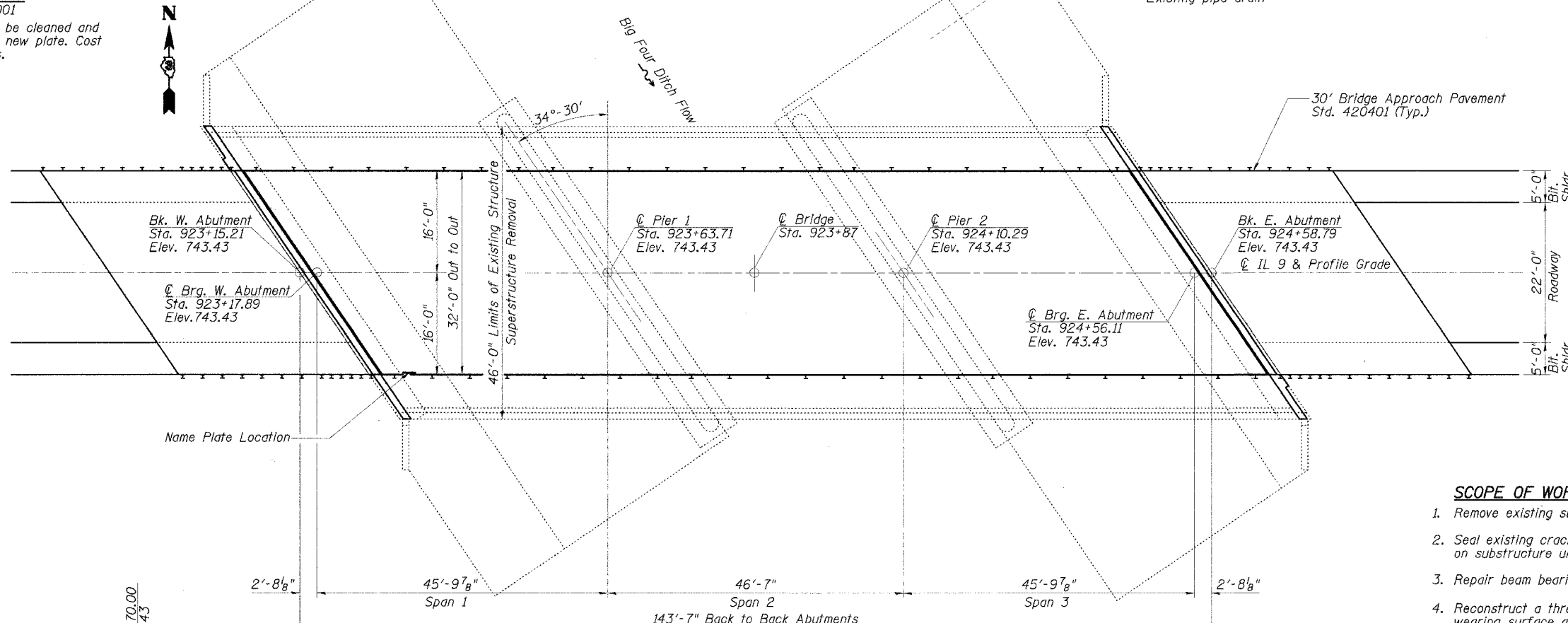
General Plan	Dwg. No. 1 of 15
General Data	Dwg. No. 2 of 15
Superstructure	Dwg. No. 3 of 15
Superstructure Details	Dwg. No. 4-5 of 15
Type SM Steel Bridge Rail	Dwg. No. 6 of 15
Strip Seal Expansion Joint	Dwg. No. 7 of 15
Anchor Bolt Details	Dwg. No. 8 of 15
West Abutment	Dwg. No. 9 of 15
East Abutment	Dwg. No. 10 of 15
Abutment Details	Dwg. No. 11 of 15
Pier 1	Dwg. No. 12 of 15
Pier 2	Dwg. No. 13 of 15
Pier Details	Dwg. No. 14 of 15
Bar Splicer Assembly Details	Dwg. No. 15 of 15



STATION 923+87
BUILT 200_ BY
STATE OF ILLINOIS
F.A.P. RT. 697 SEC. 17BR
LOADING HS20
STR. NO. 027-0068

NAME PLATE

Note: See Std. 515001
Existing Name Plate shall be cleaned and relocated adjacent to the new plate. Cost included with Name Plates.



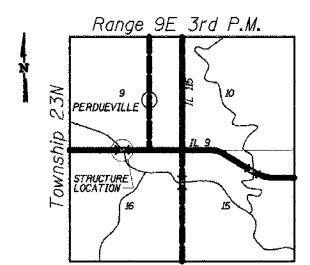
PLAN

SCOPE OF WORK

1. Remove existing surfacing, concrete parapets, and deck beams.
2. Seal existing cracks and repair delaminated/spalled concrete areas on substructure units.
3. Repair beam bearing seats at abutments and piers as required.
4. Reconstruct a three-span PPCD beam superstructure with concrete wearing surface and Steel Bridge Rail Type SM, and new bridge approach pavements.

DESIGN SPECIFICATION

2002 AASHTO
LOADING HS20-44
Allow 50 psf future wearing surface
DESIGN STRESSES
FIELD UNITS
f'c = 5,000 psi (Concrete Wearing Surface)
f'c = 3,500 psi (All concrete except CWS)
fy = 60,000 psi (reinf.)
PRECAST PRESTRESSED UNITS
f'c = 5,000 psi
f'ci = 4,000 psi
f's = 270,000 psi (1/2" low lax strands)
f'si = 201,960 psi (1/2" low lax strands)
SEISMIC DATA
Seismic Performance Category (SPC) = A
Bedrock Acceleration Coefficient (A) = 0.045g
Site Coefficient (S) = 1.2



LOCATION SKETCH

GENERAL PLAN
IL 9 OVER BIG FOUR DITCH
FAP ROUTE 697-SECTION 17BR
FORD COUNTY
STATION 923+87.00
STRUCTURE NO. 027-0068



EXPIRES 11-30-06
Richard D. Payne
SIGNATURE
10/26/05
DATE

ESCA
CONSULTANTS, INC.

DESIGNED BY:	ELH	5/05
DRAWN BY:	CJG	5/05
CHECKED BY:	ELH	10/05
APPROVED BY:	RDP	10/05