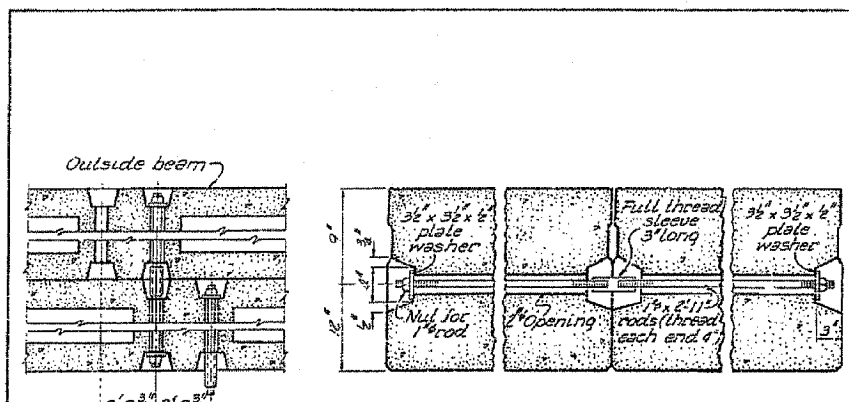
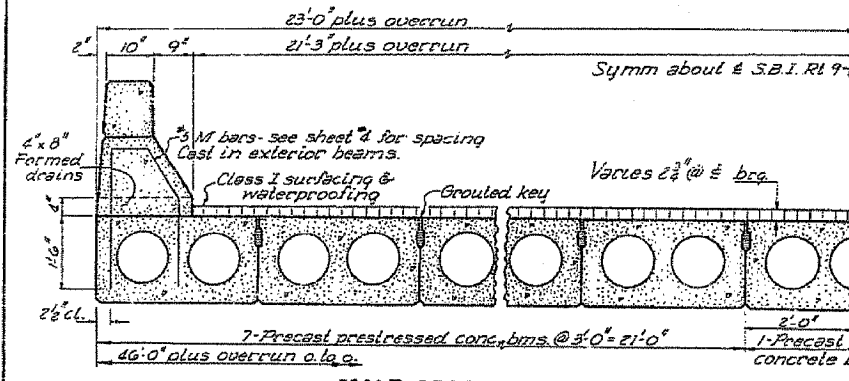


FAP R/T E	SECTION	COUNTY	TOTAL SHEETS	SHEET NO.
697	17BR	FORD	40	30
STA.	TO STA.			
FED. ROAD DIST. NO.	ILLINOIS FED. AID PROJECT			

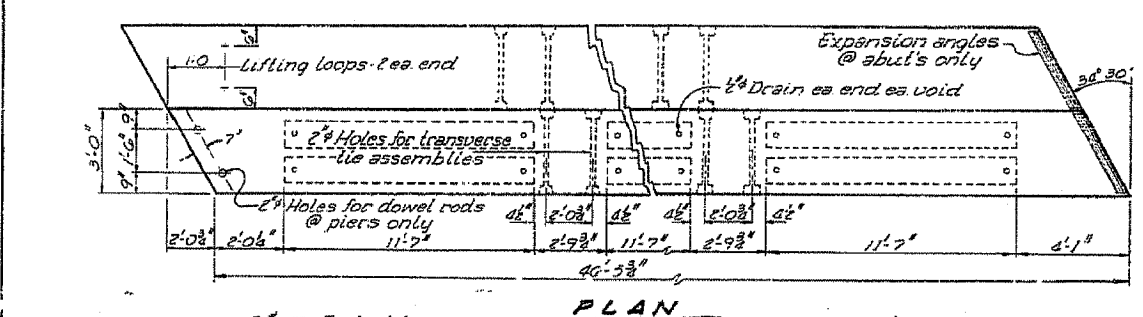
DATE	REVISION	BY	NO.	SHEET NO.
10	FORD	77	29	7 SHEETS



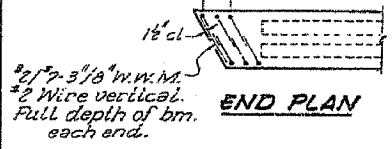
TYPICAL TRANSVERSE TIE ASSEMBLY



HALF CROSS SECTION

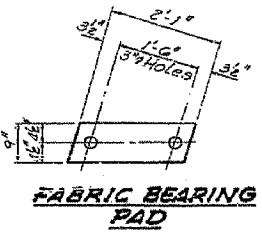


PLAN

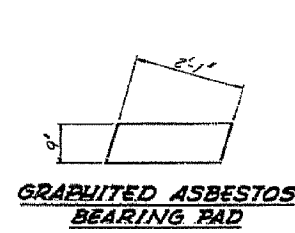


END PLAN

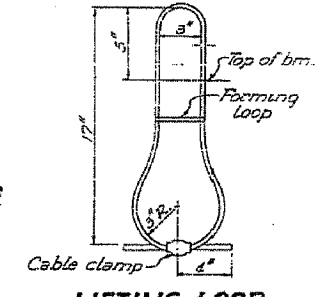
DESIGNED	J. M. G.	EXAMINED	June 16, 1970
CHECKED	Robert Tenney	PASSED	M. C. D.
DRAWN	J. Mullerix	APPROVED	Richard H. Holten
G.M. CHECKED	Robert Tenney		



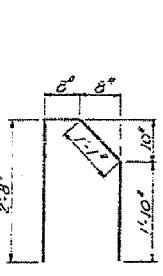
FABRIC BEARING PAD



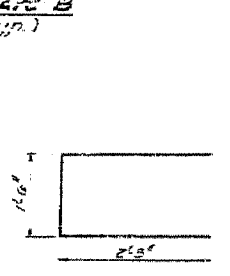
GRAPHITED ASBESTOS BEARING PAD



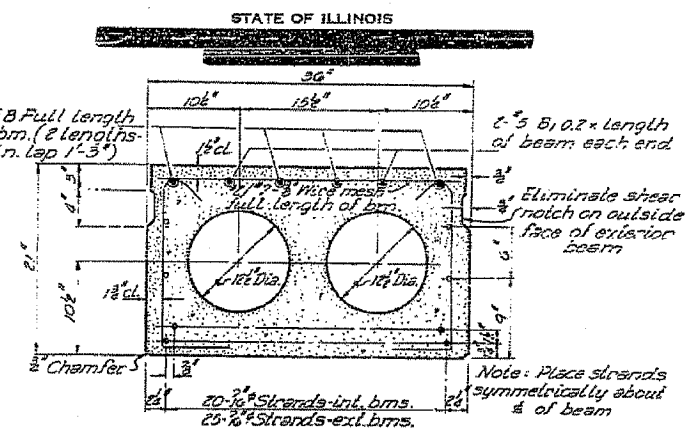
LIFTING LOOP



BAR M

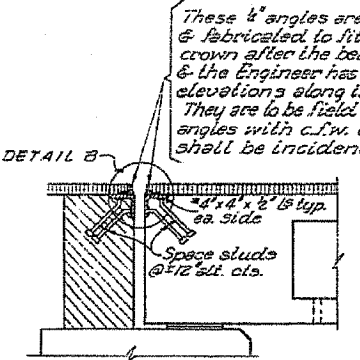


BAR U



TYPICAL SECTION

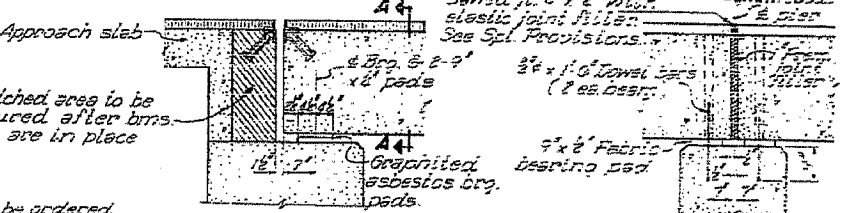
20 1/2" Strands, each strand stressed to 18,900 lbs.
7 Strands 1 3/4" up, 11 strands 3 3/4" up, 2 strands 9" up
EXTERIOR BEAMS
25 1/2" Strands, each strand stressed to 18,900 lbs.
14 Strands 1 3/4" up, 7 strands 3 3/4" up, 2 strands 9" up, 2 Strands 15" up



EXPANSION ANGLE AT ABUTTS.
*Cost of angles & studs included in Unit Price Bid for Precast Prestressed Concrete Deck Beams

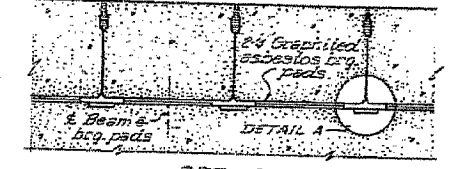
These 4" angles are to be ordered & fabricated to fit the pavement crown after the beams are in place & the Engineer has taken profile elevations along the entire structure. They are to be field welded to 4" x 4" x 8" angles with c.m. Cost of 4" angles shall be incidental.

GENERAL NOTES
Prestressing steel shall be non-galvanized high strength, stress-relieved 7 wire strand.
The nominal diameter shall be 7/8" & the nominal cross-sectional area shall be 0.109 sq. inches.
Lifting loops shall be 3/4" diameter 6 x 19 class wire rope with fiber core & shall have a minimum ultimate tensile strength of 29,000 lbs.
The 1 1/2" rods in the transverse tie assembly shall be tapered to a snug fit & the threads set. Pockets that receive transverse tie bars in exterior beam shall be filled with grout after transverse tie assembly is in place.
Longitudinal shear keys shall be packed with a very dry mix of 2" sand & PC mortar.
After beams have been erected, holes for dowel anchors shall be drilled into the sub-structure & the anchor dowels shall be grouted in place.
Steel for armor angles shall be A.S.T.M. A-36.
After fabrication, the transverse tie assemblies (tie rods, nuts, washers & sleeves) shall be hot-dipped galvanized in accordance with A.S.T.M. designation: A-152.
Cost of reinforcement & accessories cast into the beam, bearing pads, armor angles & grouting longitudinal shear keys is included in the Unit Price Bid for Precast Prestressed Concrete Deck Beams.
Dowel rods shall be A.S.T.M. A-306, or A.S.T.M. A-315.
Transverse tie rods shall be A.S.T.M. A-306, grade 70 or 80.



SEC. THRU ABUTTS (Dimensions @ RL 15)

SEC. THRU PIERS (Dimensions @ RL 15)



DETAIL A



DETAIL A

21" x 36" P.P.C. BM

BILL OF MATERIAL

Spec. No.	Size	Length	Space
3	3/8"	23'-0"	
5	1/2"	4'-0"	
M	272	#5	6'-5"
U	300	#6	6'-0"

Precast Prestressed Conc. Deck Beams (21)

SUPERSTRUCTURE & 21" x 36" P.P.C. BEAM DETAILS
PART 10 (S.B.I. 279) SEC. 17BR
FORD COUNTY
STATION 963 + 67.00