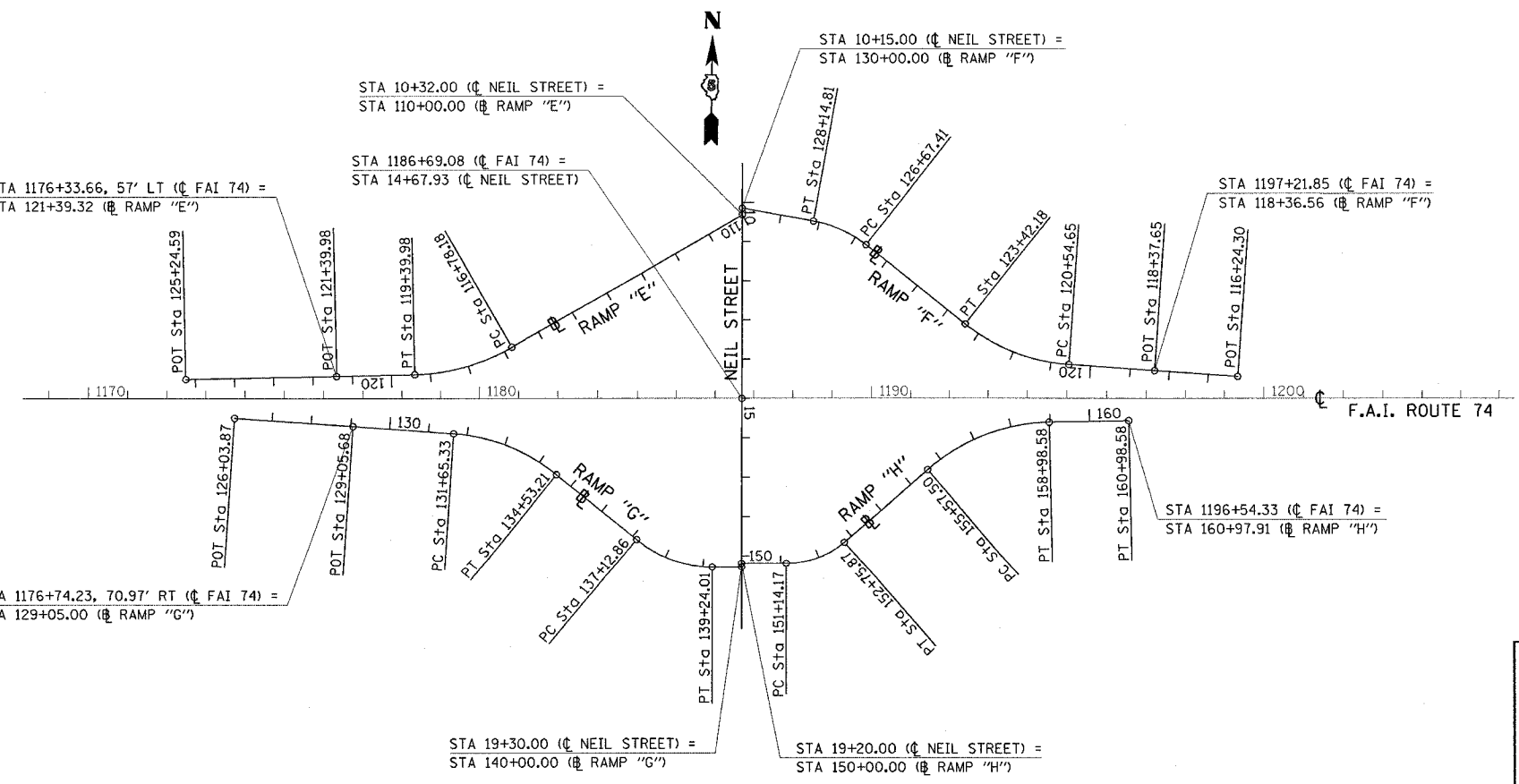


PROSPECT AVENUE

EXIST. CURVE RAMP "A"	EXIST. CURVE RAMP "B"
PI STA. = 18+64.67	PI STA. = 21+24.76
$\Delta = 18^\circ 43' 27''$ (RT)	$\Delta = 15^\circ 25' 39''$ (RT)
D = 5' 04' 27"	D = 3' 40' 23"
R = 1,129.18'	R = 1,559.84'
T = 186.17'	T = 211.28'
L = 369.02'	L = 420.00'
E = 15.24'	E = 14.24'
S.E. = -----	S.E. = -----
P.C. STA. = 16+78.50	P.C. STA. = 19+13.49
P.T. STA. = 20+47.52	P.T. STA. = 23+33.49

EXIST. CURVE RAMP "C"	EXIST. CURVE RAMP "D"
PI STA. = 30+85.10	PI STA. = 58+14.87
$\Delta = 9^\circ 17' 00''$ (RT)	$\Delta = 13^\circ 34' 08''$ (RT)
D = 3' 44' 18"	D = 3' 28' 01"
R = 1,532.67'	R = 1,652.59'
T = 124.44'	T = 196.60'
L = 248.33'	L = 391.37'
E = 5.04'	E = 11.65'
S.E. = -----	S.E. = -----
P.C. STA. = 29+60.66	P.C. STA. = 56+18.26
P.T. STA. = 32+08.99	P.T. STA. = 60+09.63



NEIL STREET

EXIST. CURVE RAMP "E"	EXIST. CURVE RAMP "F" (1)	EXIST. CURVE RAMP "F" (2)
PI STA. = 118+11.89	PI STA. = 122+02.94	PI STA. = 127+42.65
$\Delta = 28^\circ 44' 34''$ (RT)	$\Delta = 34^\circ 34' 42''$ (RT)	$\Delta = 28^\circ 20' 27''$ (LT)
D = 10' 58' 44"	D = 12' 01' 34"	D = 19' 13' 36"
R = 521.87'	R = 476.43'	R = 298.00'
T = 133.72'	T = 148.29'	T = 75.24'
L = 261.80'	L = 287.53'	L = 147.40'
E = 16.86'	E = 22.55'	E = 9.35'
S.E. = -----	S.E. = -----	S.E. = -----
P.C. STA. = 116+78.18	P.C. STA. = 120+54.65	P.C. STA. = 126+67.41
P.T. STA. = 119+39.98	P.T. STA. = 123+42.18	P.T. STA. = 128+14.81

EXIST. CURVE RAMP "G" (1)	EXIST. CURVE RAMP "G" (2)	EXIST. CURVE RAMP "H" (1)	EXIST. CURVE RAMP "H" (2)
PI STA. = 133+13.99	PI STA. = 138+23.02	PI STA. = 151+98.69	PI STA. = 157+35.23
$\Delta = 35^\circ 15' 54''$ (RT)	$\Delta = 40^\circ 19' 38''$ (LT)	$\Delta = 41^\circ 10' 30''$ (LT)	$\Delta = 39^\circ 45' 35''$ (RT)
D = 12' 15' 00"	D = 19' 05' 55"	D = 25' 27' 53"	D = 11' 39' 26"
R = 467.72'	R = 300.00'	R = 225.00'	R = 491.51'
T = 148.66'	T = 110.16'	T = 84.52'	T = 177.73'
L = 287.88'	L = 211.15'	L = 161.69'	L = 341.08'
E = 23.06'	E = 19.59'	E = 15.35'	E = 31.15'
S.E. = -----	S.E. = -----	S.E. = -----	S.E. = -----
P.C. STA. = 131+65.33	P.C. STA. = 137+12.86	P.C. STA. = 151+14.17	P.C. STA. = 155+57.50
P.T. STA. = 134+53.21	P.T. STA. = 139+24.01	P.T. STA. = 152+75.87	P.T. STA. = 158+98.58

**FOR INFORMATION ONLY**

FOR INFORMATION ONLY FIELD VERIFY BEFORE USING THIS DATA. WHERE EXISTING CONDITIONS VARY FROM DATA, MATCH EXISTING.

ILLINOIS DEPARTMENT OF TRANSPORTATION

**ALIGNMENT LAYOUT**

F.A.I. ROUTE 74

SECTION 10(5-1-RS-1,14-1(RRS & 6RS-3)

CHAMPAIGN COUNTY

SCALE: 1" = 200'

DATE: 10/30/05

DRAWN BY: CADD

CHECKED BY:

PLOT DATE = 11/18/2005  
 FILE NAME = c:\projects\70141\1015-1-RS-1,14-1(RRS & 6RS-3)\1015-1-RS-1,14-1(RRS & 6RS-3).dgn  
 PLOT SCALE = 200.0000 / IN.  
 USER NAME = phillipsj