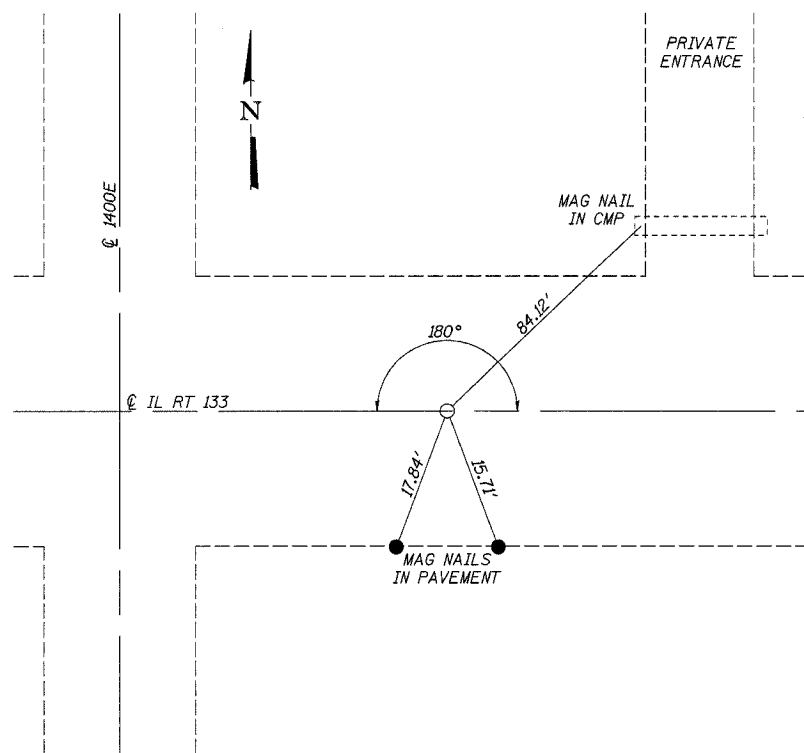


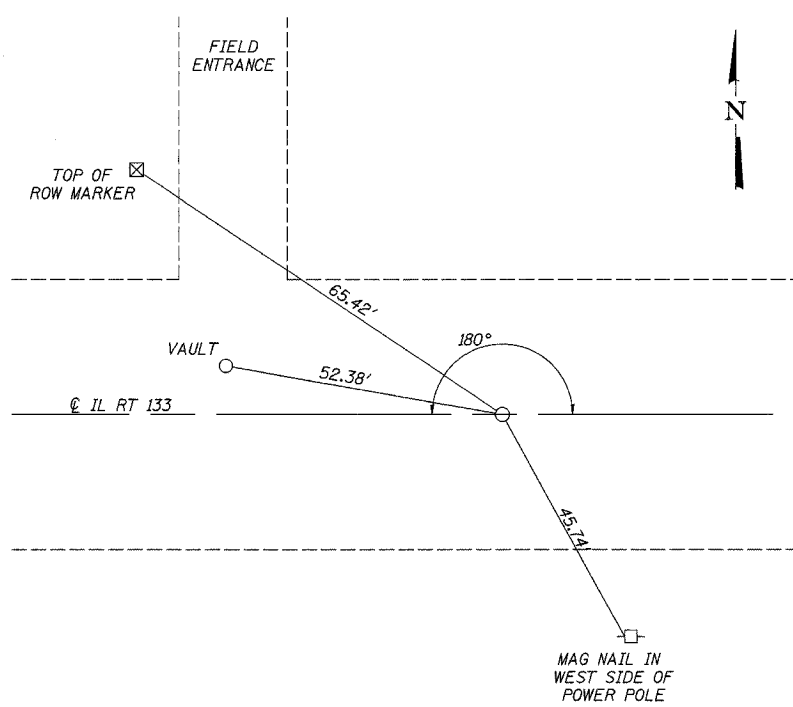
F.A.P. RTE.	SECTION	COUNTY	TOTAL SHEETS	SHEET NO.
749	119(BR-2 & BR-3)	MOULTRIE	37	5

FED. ROAD DIST. NO. ILLINOIS FED. AID PROJECT

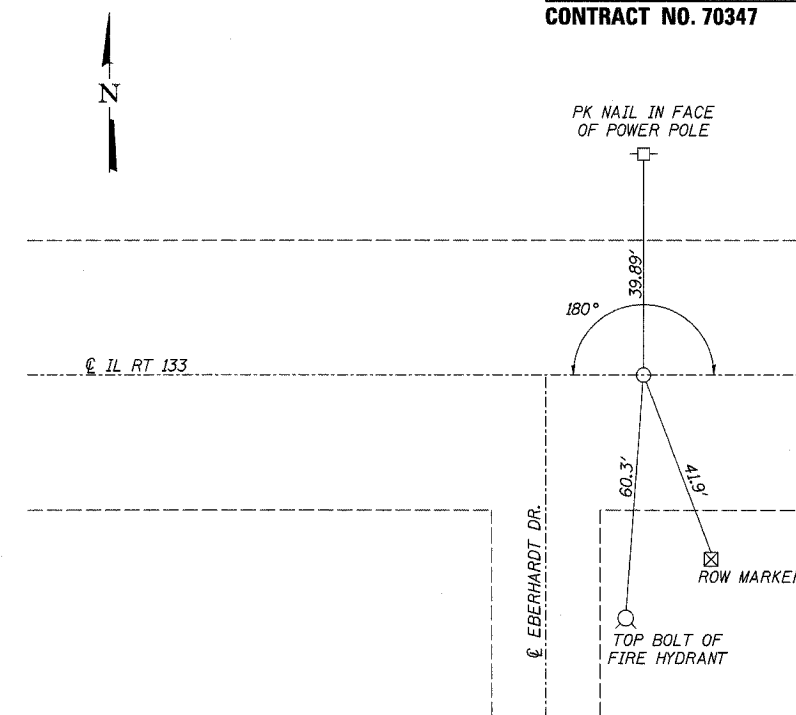
CONTRACT NO. 70347



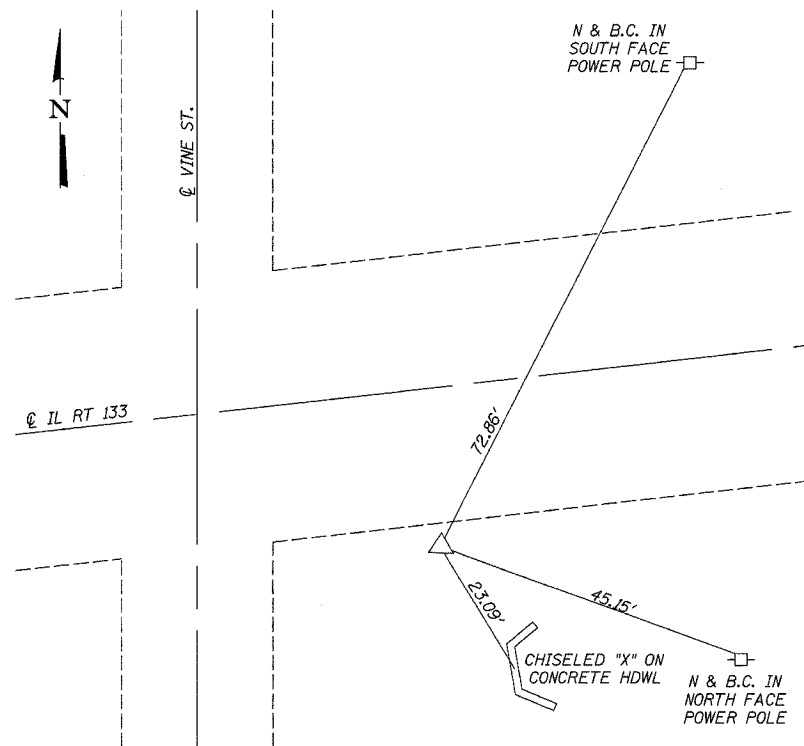
POT STA. 243+93.12
IRON PIN WITH CAP



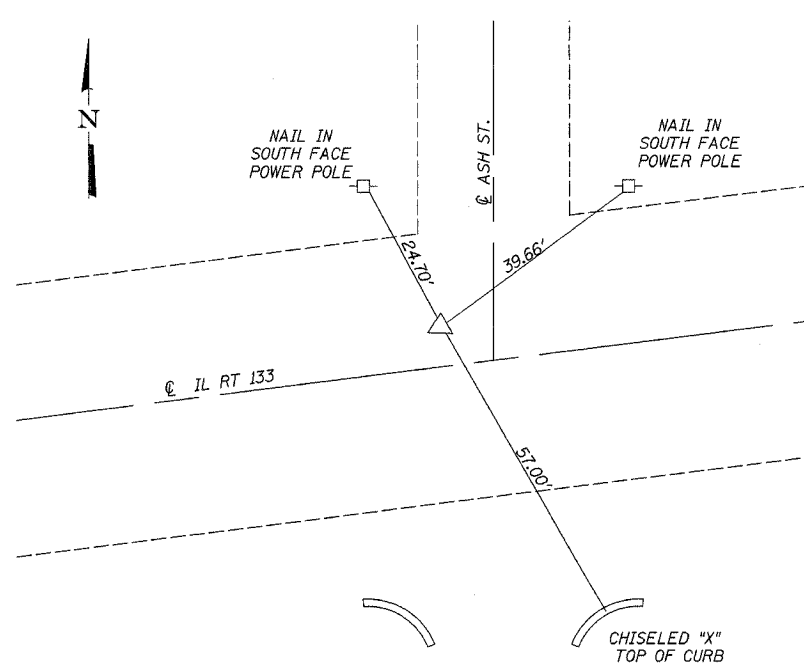
POT STA. 269+40.69
IRON PIN WITH CAP



POT STA. 441+65.70



PI STA. 2+19.14
IRON PIN WITH CAP



PI STA. 6+26.34
IRON PIN WITH CAP

CROSS TIES
FAP ROUTE 749 (IL ROUTE 133)
SECTION 119(BR-2 & BR-3)
MOULTRIE COUNTY
S.N. 070-0016 & S.N. 070-0035

CUMMINS ENGINEERING CORPORATION
JOB #: 2114.4
FILE: 2114XTIES.DGN
DATE: 10/10/05