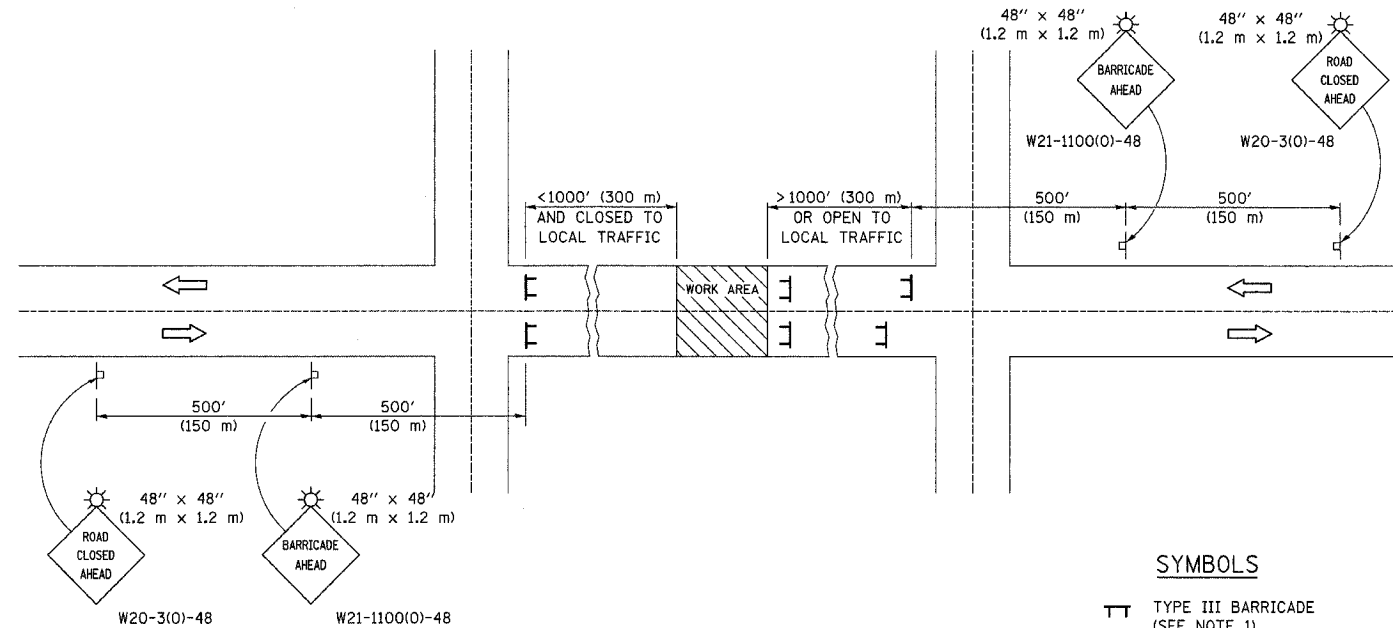


FAP ROUTE	SECTION	COUNTY	TOTAL SHEETS	SHEET NO.
749	119(BR-2 & BR-3)	MOULTRIE	37	9
FED. ROAD DIST. NO.	ILLINOIS PROJECT			

CONTRACT NO. 70347

## TYPICAL APPLICATION OF TRAFFIC CONTROL DEVICES FOR ROAD CLOSURE



### SYMBOLS

- ▬ TYPE III BARRICADE (SEE NOTE 1)
- ⚡ FLASHING AMBER LIGHT (TYPE A)

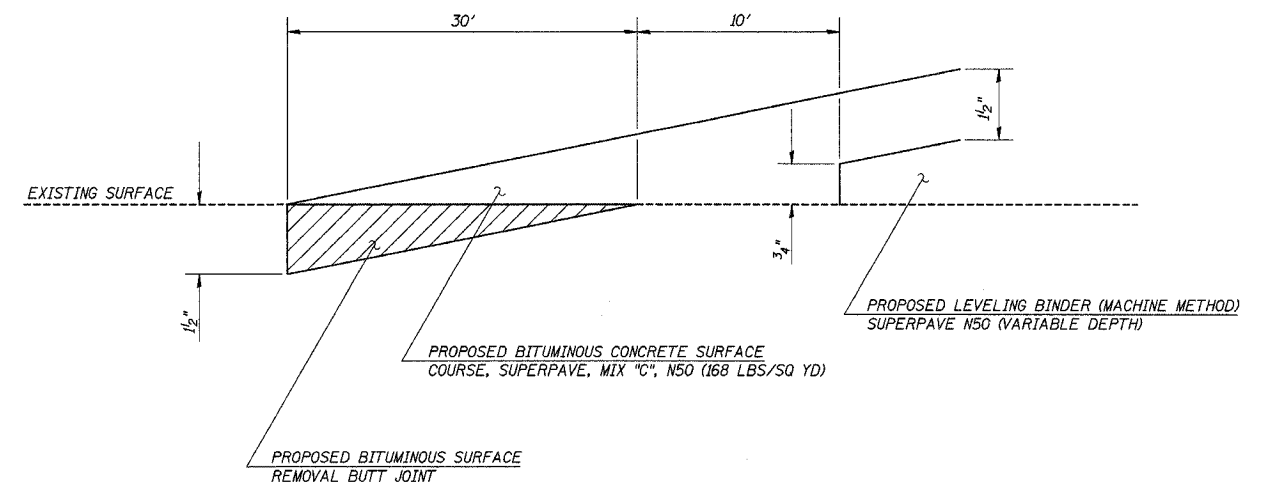
### GENERAL NOTES

- TYPE III BARRICADES SHALL BE AS SHOWN ON STANDARD 702001 "TYPICAL APPLICATIONS OF TYPE III BARRICADES CLOSING A ROAD". EACH TYPE III BARRICADE SHALL HAVE TWO FLASHING AMBER LIGHTS MOUNTED ABOVE IT.
- IF THE ROAD IS OPEN TO LOCAL TRAFFIC OR EXCEEDS 1000' (300 m), ANOTHER SET OF TYPE III BARRICADES, EQUIPPED AS IN NOTE 1 ABOVE, SHALL BE PLACED AT EACH END OF THE WORK AREA.
- WHEN A STOP CONDITION EXISTS, NO SIGNS ARE REQUIRED IN ADVANCE OF THE "STOP" SIGN WHEN THE ROAD IS CLOSED WITHIN 100' (30 m) OF THE INTERSECTION.
- STANDARD 702001 SHALL APPLY FOR THE PLACEMENT & DESIGN OF TYPE III BARRICADES.
- IF A TYPE III BARRICADE WITH AN ATTACHED SIGN PANEL WHICH MEETS NCHRP 350 IS NOT AVAILABLE, THE SIGNS MAY BE MOUNTED ON AN NCHRP 350 TEMPORARY SIGN SUPPORT DIRECTLY IN FRONT OF THE BARRICADE.
- REFLECTORIZED STRIPING SHALL APPEAR ON BOTH SIDES OF THE TYPE III BARRICADES IF ROAD IS OPEN TO LOCAL TRAFFIC.
- ALL SIGNS SHALL BE POST MOUNTED IF THE CLOSURE TIME EXCEEDS FOUR DAYS.
- A MINIMUM OF TWO FLASHING LIGHTS SHALL BE USED AT NIGHT ON EACH APPROACH IN ADVANCE OF THE WORK AREA. FLASHING LIGHTS SHALL BE INSTALLED ABOVE THE FIRST TWO SIGNS IN THE SERIES.
- LONGITUDINAL DIMENSIONS MAY BE ADJUSTED SLIGHTLY TO FIT FIELD CONDITIONS.
- FORMS BT. 725 AND BT. 726 ARE REQUIRED.
- WHEN A SIDEROAD INTERSECTS THE HIGHWAY ON WHICH WORK IS BEING PERFORMED, ADDITIONAL TRAFFIC DEVICES SHALL BE ERECTED AND PROVIDED AS DIRECTED BY THE ENGINEER.
- AN ADDITIONAL SIGN MAY BE REQUIRED AT A MAJOR INTERSECTING ROAD IN ADVANCE OF THE CLOSURE. THE ADDITIONAL SIGN SHALL GIVE THE DISTANCE TO THE BARRICADE IN MILES OR FRACTIONS OF A MILE.

	NAME	DATE	REVISIONS	
	NAME	DATE	NAME	DATE
DESIGNED	J.H.M.	8-11-87		
CHECKED	P.E.K.	8-25-87	R.M.H.	12/97
CADD NO.	F-5.03		C.P./K.A.G.	01/05

ALL DIMENSIONS ARE IN INCHES (MILLIMETERS) UNLESS OTHERWISE SHOWN.

## BITUMINOUS SURFACE REMOVAL - BUTT JOINT



### BITUMINOUS SURFACE REMOVAL - BUTT JOINT

LOCATION	LENGTH FOOT	WIDTH FOOT	AREA SQ YD
STA. 257+30 TO STA. 257+60	30	40	134
STA. 259+79 TO STA. 260+09	30	40	134
STA. 451+50 TO STA. 451+80	30	40	134
STA. 1+07 TO STA. 1+37	30	40	134
TOTAL			536

### TEMPORARY RAMP

LOCATION	LENGTH FOOT	WIDTH FOOT	AREA SQ YD
STA. 451+50 TO STA. 451+55	5	40	23
STA. 452+74.68 TO STA. 452+90.68	16	40	72
STA. 0+14.00 TO STA. 0+26.00	12	40	54
STA. 1+32 TO STA. 1+37	5	40	23
TOTAL			172

MILLING AND RESURFACING AT S.N. 070-0035 SHALL BE DONE WITH THE ROAD CLOSED TO ALL TRAFFIC. IF THE CONTRACTOR ELECTS TO DELAY THIS WORK UNTIL AFTER THE ROAD IS OPEN, ADDITIONAL TRAFFIC CONTROL, AGGREGATE PRIME COAT AND TEMPORARY RAMPS AT THE APPROACH PAVEMENT AND BUTT JOINT WILL BE REQUIRED. THE COST OF THESE ITEMS WILL NOT BE PAID FOR SEPARATELY BUT SHALL BE INCLUDED IN THE COST OF THE VARIOUS RESURFACING ITEMS.

### ROAD CLOSURE & BUTT JOINT DETAILS

FAP ROUTE 749 (IL RTE. 133)  
SECTION 119(BR-2 & BR-3)  
MOULTRIE COUNTY  
S.N. 070-0016 & S.N. 070-0035

CUMMINS ENGINEERING CORPORATION  
JOB #: 2114.3  
FILE: 2114.3BUTTJT  
DATE: 10/10/05