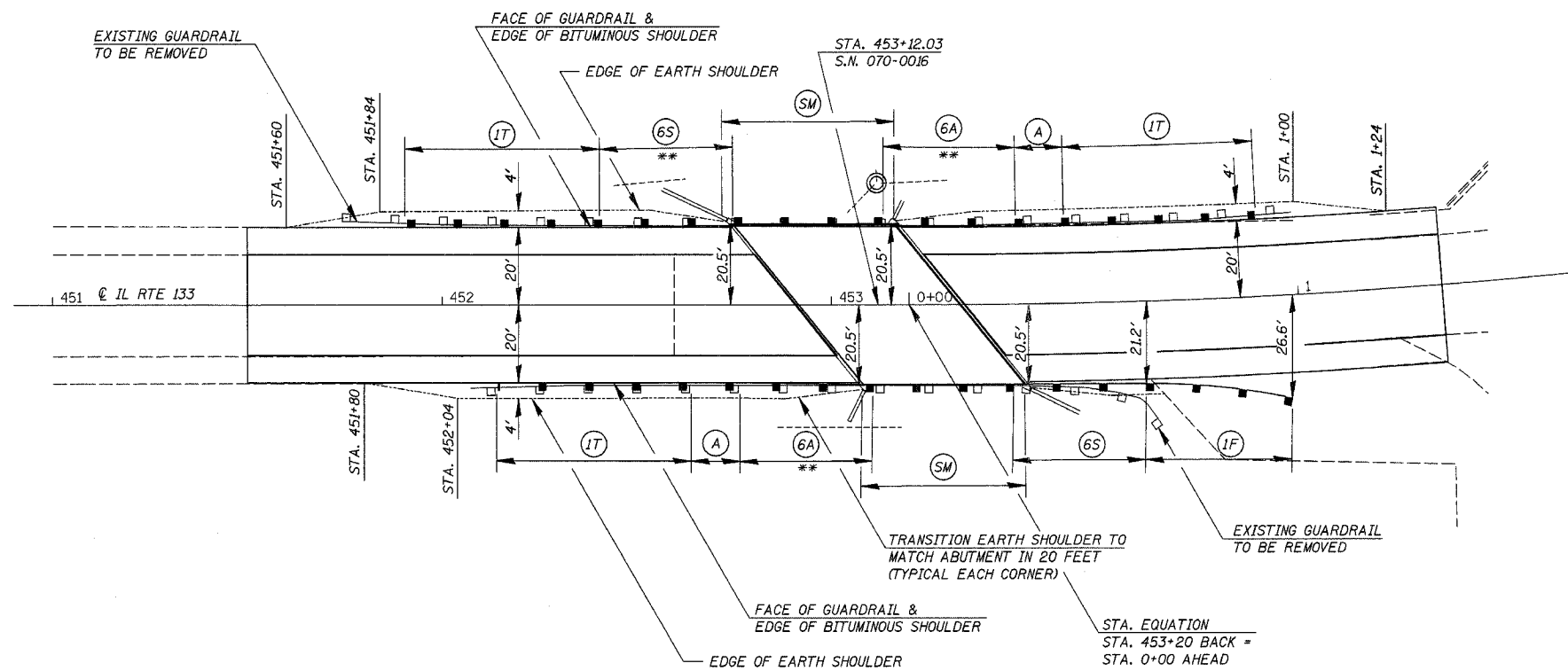


F.A.P. RTE.	SECTION	COUNTY	TOTAL SHEETS	SHEET NO.
749	119(BR-2&BR-3)	MOULTRIE	37	14
STA. 451+00		TO STA. 1+37		
FED. ROAD DIST. NO.		ILLINOIS	FED. AID PROJECT	

CONTRACT NO. 70347

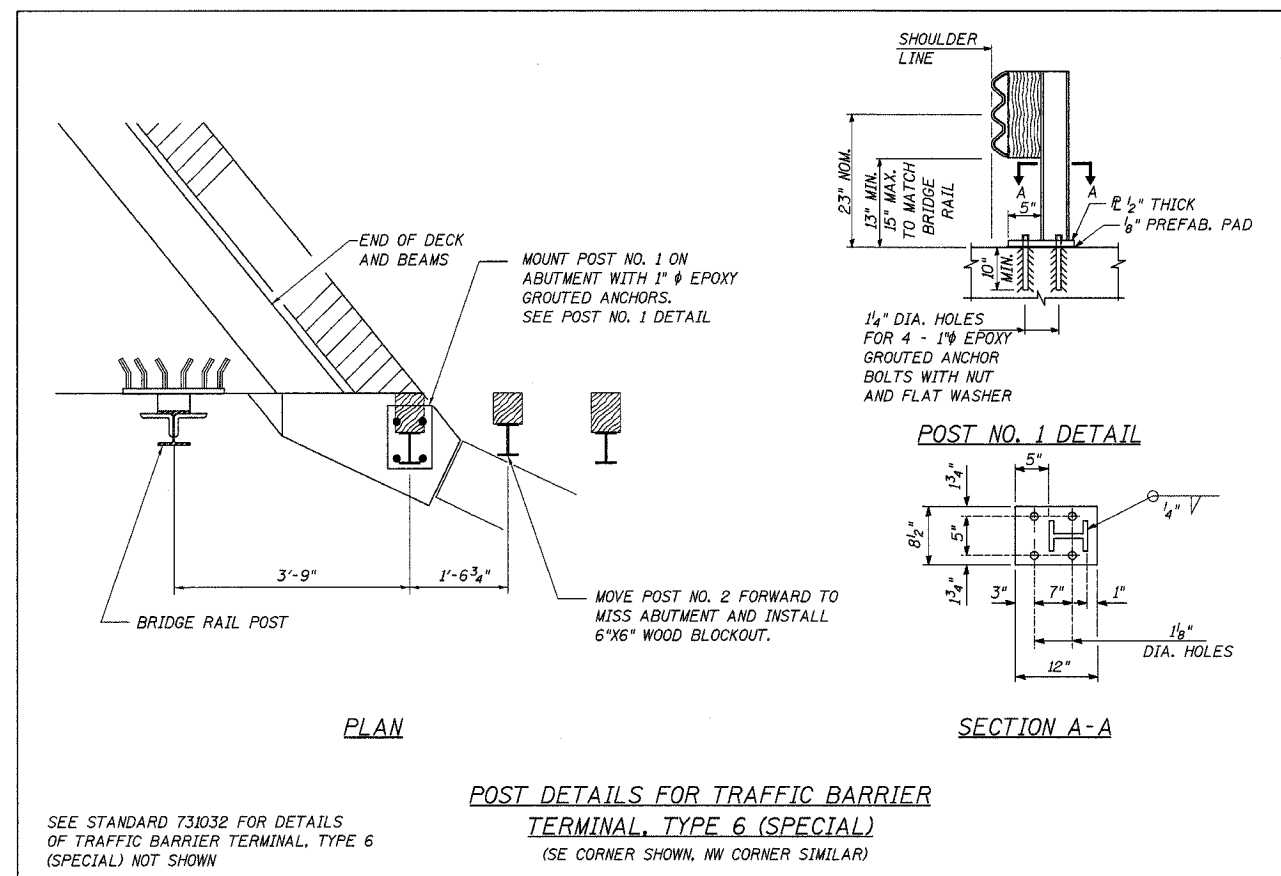


LEGEND

- (A) STEEL PLATE BEAM GUARDRAIL, TYPE A
- (6A) TRAFFIC BARRIER TERMINAL, TYPE 6A
- (6S) TRAFFIC BARRIER TERMINAL, TYPE 6 (SPECIAL)
- (IT) TRAFFIC BARRIER TERMINAL TYPE I, SPECIAL (TANGENT)
- (IF) TRAFFIC BARRIER TERMINAL TYPE I, SPECIAL (FLARED)
- (SM) STEEL BRIDGE RAIL, TYPE SM

** TRANSITION THE INSIDE FACE OF THE TRAFFIC BARRIER TERMINAL FROM 20'-6" LT & RT AT BRIDGE RAIL TO 20' LT & RT AT GUARDRAIL OR TYPE I TERMINAL.

TRAFFIC BARRIER TERMINAL TYPE I, SPECIAL (FLARED) SHALL BE 37'-6" LONG.



STEEL PLATE BEAM GUARDRAIL, TYPE A	
LOCATION	FOOT
LT STA. 0+27.31 TO STA. 0+39.81	12.5
RT STA. 452+64.30 TO STA. 452+76.80	12.5
TOTAL	25

GUARDRAIL MARKERS, TYPE A	
LOCATION	EACH
LT STA. 452+44.1 TO STA. 0+39.81	4
RT STA. 452+64.3 TO STA. 0+59.80	4
TOTAL	8

TRAFFIC BARRIER TERMINAL, TYPE 6A	
LOCATION	EACH
LT STA. 453+13.16 TO STA. 0+27.31	1
RT STA. 452+76.80 TO STA. 453+10.95	1
TOTAL	2

TERMINAL MARKER - DIRECT APPLIED	
LOCATION	EACH
LT STA. 451+94.10	1
LT STA. 0+39.81	1
RT STA. 452+14.30	1
RT STA. 0+97.30	1
TOTAL	4

TRAFFIC BARRIER TERMINAL, TYPE 6 (SPECIAL)	
LOCATION	EACH
LT STA. 452+44.10 TO STA. 452+78.25	1
RT STA. 0+25.65 TO STA. 0+59.80	1
TOTAL	2

TRAFFIC BARRIER TERMINAL TYPE I, SPECIAL (TANGENT)	
LOCATION	EACH
LT STA. 451+94.10 TO STA. 452+44.10	1
LT STA. 0+39.81 TO STA. 0+89.81	1
RT STA. 452+14.30 TO STA. 452+64.30	1
TOTAL	3

TRAFFIC BARRIER TERMINAL TYPE I, SPECIAL (FLARED)	
LOCATION	EACH
RT STA. 0+59.80 TO STA. 0+97.30	1
TOTAL	1

GUARDRAIL REMOVAL	
LOCATION	FOOT
LT STA. 451+75 TO STA. 452+75	100
LT STA. 453+17 TO STA. 0+97.00	100
RT STA. 452+08 TO STA. 453+08	100
RT STA. 0+30.00 TO STA. 0+65.00	38
TOTAL	338

SEE STANDARD 630301 FOR DETAILS OF SHOULDER WIDENING NOT SHOWN.

GUARDRAIL AND SHOULDER DETAILS

FAP ROUTE 749 (IL RTE. 133)
SECTION 119(BR-2 & BR-3)
MOULTRIE COUNTY
S.N. 070-0016 & S.N. 070-0035

CUMMINS ENGINEERING CORPORATION	JOB #: 2114.3
	FILE: 21143GRAIL
	DATE: 10/10/05