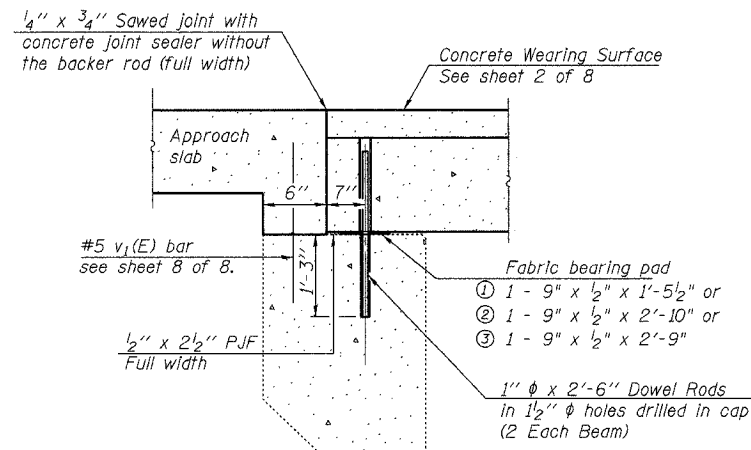
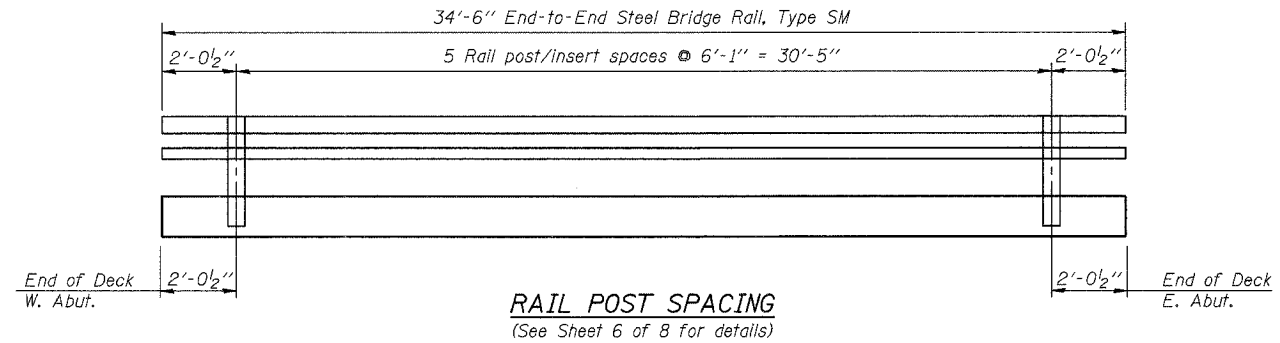


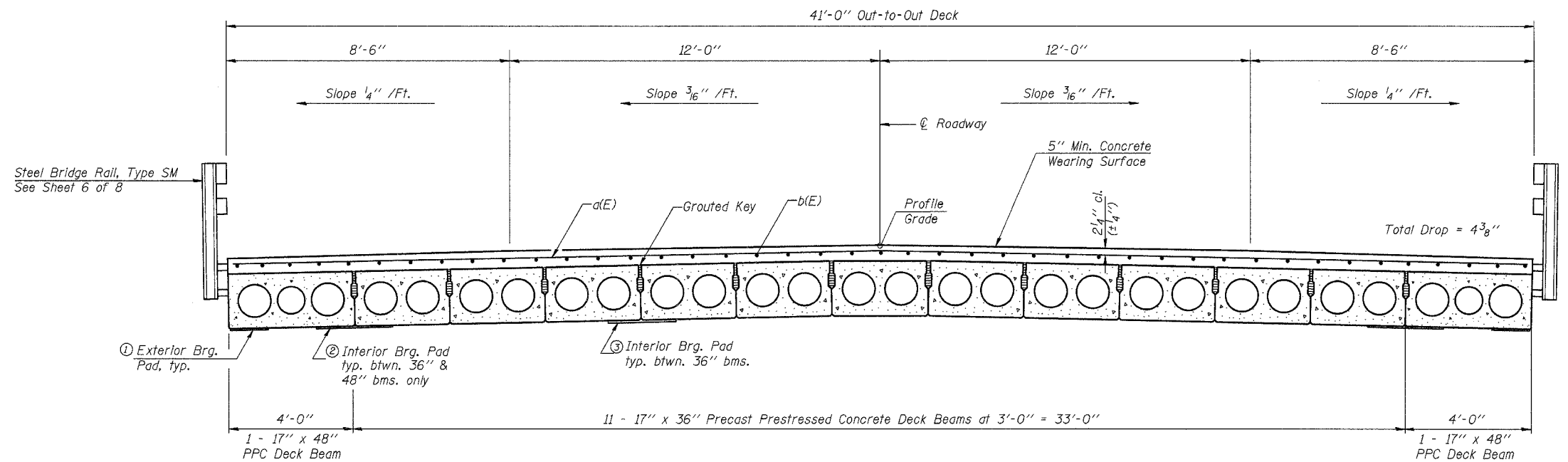
ROUTE NO.	SECTION	COUNTY	TOTAL SHEETS	SHEET NO.
F.A.P. 749	119(BR-2 & BR-3)	MOULTRIE	37	18
FED. ROAD DIST. NO. 5		ILLINOIS PROJECT		
Sheet 3 of 8		CONTRACT #70347		



SECTION THRU ABUTMENT



RAIL POST SPACING
(See Sheet 6 of 8 for details)



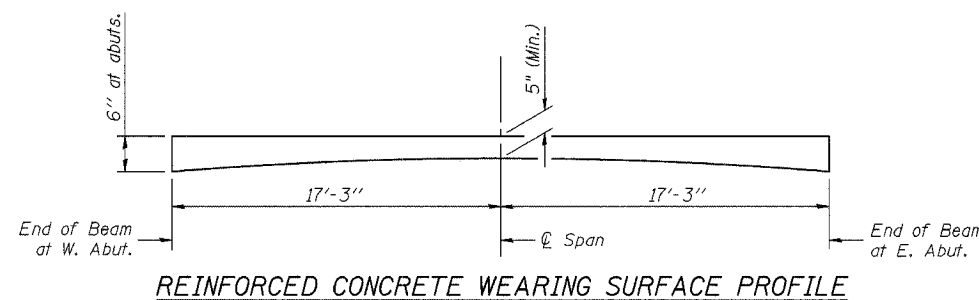
CROSS SECTION

Notes :
 After beams have been erected, holes for dowel rods shall be drilled into the substructure and dowel rods placed. Dowel holes shall be filled with non-shrink grout to the top of beam and allowed to cure a minimum of 24 hrs. prior to grouting the shear keys.
 Dowel rods drilled in cap are included in the cost of Precast Prestressed Concrete Deck Beams (17" Depth).
 Concrete wearing surface to be poured after grouting the shear keys.
 Approach Slab to be poured after concrete wearing surface is in place.
 See sheets 4 and 5 of 8 for bearing pad details.

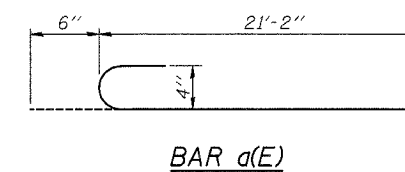
**SUPERSTRUCTURE
BILL OF MATERIAL**

Bar	No.	Size	Length	Shape
a(E)	70	#4	21'-8"	C
b(E)	82	#4	18'-0"	—
Reinforcement Bars, Epoxy Coated			Pound	2000
Concrete Wearing Surface			Sq. Yd.	157

Reinforcement bars designated (E) shall be epoxy coated.



REINFORCED CONCRETE WEARING SURFACE PROFILE



BAR a(E)

DESIGNED	T.S.H.
CHECKED	R.V.B.
DRAWN	T.S.H.
CHECKED	M.D.C.

SUPERSTRUCTURE DETAILS

ILLINOIS ROUTE 133 OVER
 JONATHAN CREEK
 F.A.P. ROUTE 749 - SEC. 119(BR-2 & BR-3)
 MOULTRIE COUNTY
 STATION 258+73.50
 STRUCTURE NO. 070-0035

CUMMINS ENGINEERING CORPORATION

JOB #: 2114.4
 FILE: 21144SUPER
 DATE: 10/12/05