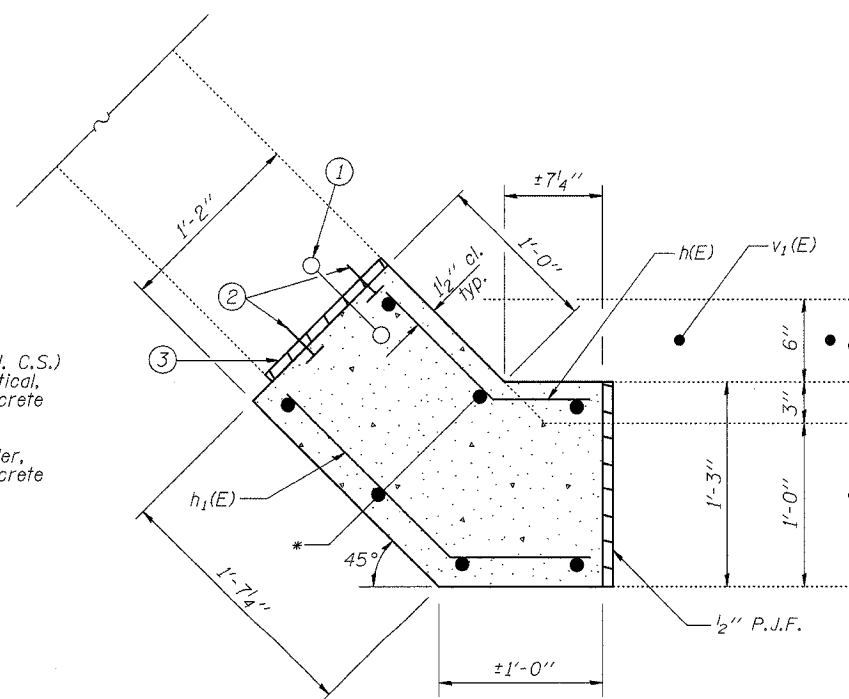


- ① Existing water seal, to remain. See existing plans for details.
- ② Concrete Nails (Flat Hd. C.S.) 1" long at 12" cts. vertical, cost included with Concrete Structures.
- ③ 1/2" Premolded Joint Filler, cost included with Concrete Structures.



DETAIL AT ABUTMENT CORNERS
(NE & SW corners shown, NW & SE corners similar)

DESIGNED	T.S.H.
CHECKED	R.V.B.
DRAWN	T.S.H.
CHECKED	M.D.C.

Notes:
 All exposed edges shall have 3/4" chamfers unless noted otherwise.
 Concrete Structures shown are to be poured after the Concrete Wearing Surface is in place and cured.
 Reinforcement bars designated (E) shall be epoxy coated.
 Epoxy grout v₁(E) bars into drilled holes according to Section 584 of the Standard Specifications. Locate holes to miss existing reinforcement. Min. embedment = 9"
 * Existing #7 v bars at each corner (typ.) to be re-used. Existing reinforcement bars extending into the removal area are to be cleaned, straightened, and incorporated into the new construction. All reinforcement bars damaged during concrete removal shall be replaced with an approved bar splicer or anchorage system.

**TWO ABUTMENTS
BILL OF MATERIAL**

Bar	No.	Size	Length	Shape
h(E)	12	#5	1'-5"	
h ₁ (E)	12	#5	2'-2"	
v ₁ (E)	82	#5	2'-6"	
Reinforcement Bars, Epoxy Coated		Pound	260	
Concrete Structures		Cu. Yd.	1.0	

ABUTMENTS

ILLINOIS ROUTE 133 OVER
 JONATHAN CREEK
 F.A.P. ROUTE 749 - SEC. 119(BR-2 & BR-3)
 MOULTRIE COUNTY
 STATION 258+73.50
 STRUCTURE NO. 070-0035

CUMMINS ENGINEERING CORPORATION
 JOB #: 2114.4
 FILE: 21144ABUTS
 DATE: 10/12/05