

F.A.P. RTE.	SECTION	COUNTY	TOTAL SHEETS	SHEET NO.
840	(122BR)BR	VERMILION	25	1
FED. ROAD DIST. NO.		ILLINOIS	FED. AID PROJECT	

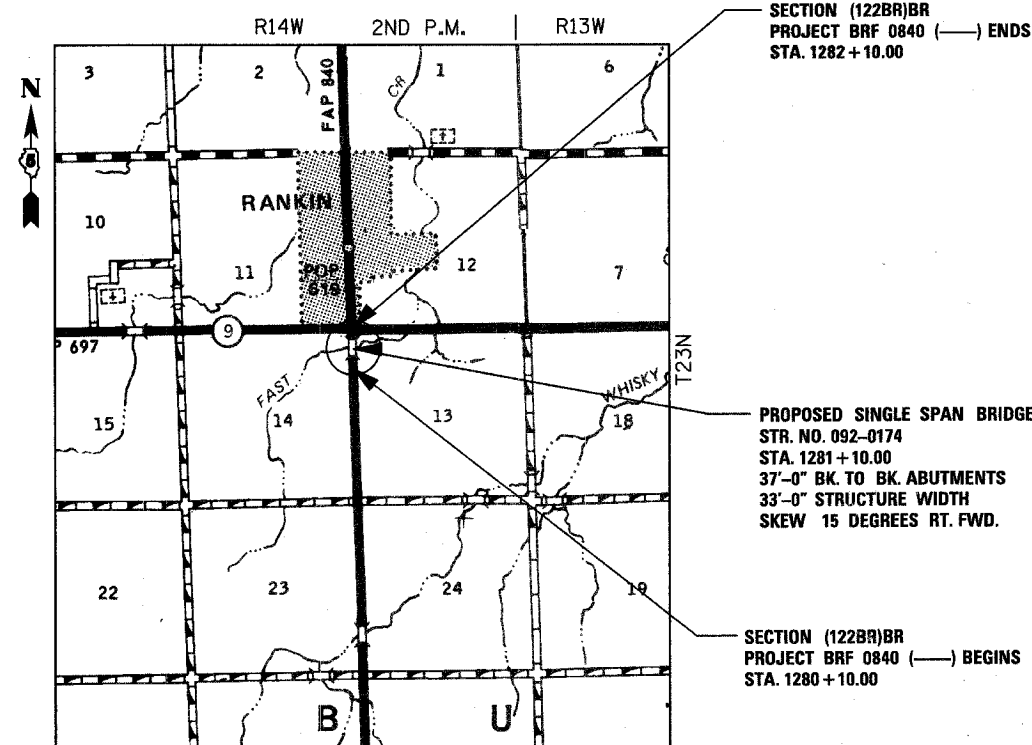
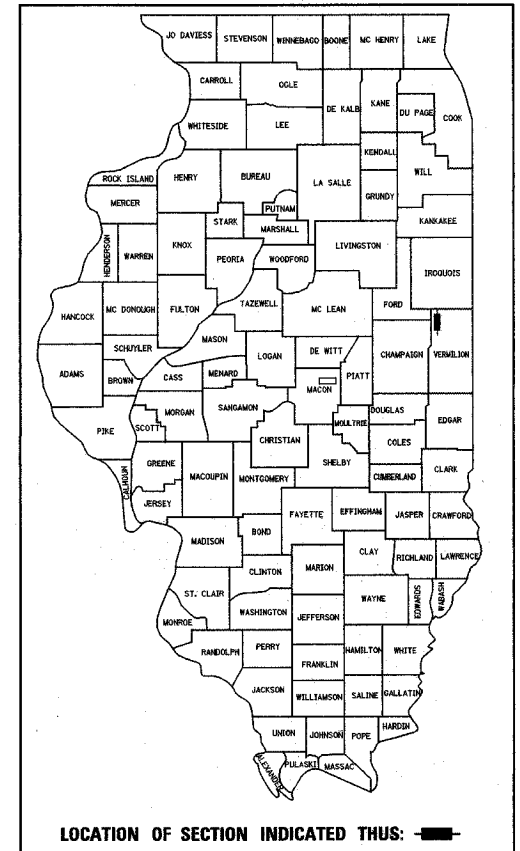
STATE OF ILLINOIS
DEPARTMENT OF TRANSPORTATION
DIVISION OF HIGHWAYS
**PLANS FOR PROPOSED
FEDERAL AID HIGHWAY**

FOR INDEX OF SHEETS, SEE SHEET NO. 2
FOR SUMMARY OF QUANTITIES, SEE SHEET NO. 3

F.A.P. ROUTE 840 (IL ROUTE 49)
SECTION (122BR)BR
VERMILION COUNTY
PROJECT NO. BHF-840(050)
C-95-025-04

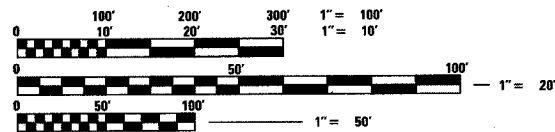
BRIDGE BEAM REPLACEMENT & BRIDGE NEW DECK
OVER FAST CREEK SOUTH OF RANKIN

D-95-024-04



PROPOSED SINGLE SPAN BRIDGE
STR. NO. 092-0174
STA. 1281 + 10.00
37'-0" BK. TO BK. ABUTMENTS
33'-0" STRUCTURE WIDTH
SKEW 15 DEGREES RT. FWD.

SECTION (122BR)BR
PROJECT BRF 0840 (---) BEGINS
STA. 1280 + 10.00



SCALES
PLAN 1" = 20'
PROFILE HORIZ. 1" = 20'
PROFILE VERT. 1" = 5'
CROSS SECTIONS 1" = 5'
1" = 2 1/2'

FULL SIZE PLANS HAVE BEEN PREPARED USING STANDARD
ENGINEERING SCALES, REDUCED SIZED PLANS WILL NOT
CONFORM TO STANDARD SCALES, IN MAKING MEASUREMENTS
ON REDUCED PLANS, THE ABOVE SCALES MAY BE USED.

FOR UNDERGROUND UTILITY
LOCATIONS CALL
J.U.L.I.E. TOLL FREE
1-800-892-0123



GROSS AND NET LENGTH OF PROJECT = 200 FEET = 0.038 MILES ADT = 1150 (2003)

STATE OF ILLINOIS
DEPARTMENT OF TRANSPORTATION
DIVISION OF HIGHWAYS

SUBMITTED Oct 18 20 05

[Signature]
DEPUTY DIRECTOR OF HIGHWAYS, REGION THREE ENGINEER

December 9 20 05
[Signature]
ENGINEER OF DESIGN AND ENVIRONMENT

December 9, 20 05
[Signature]
DEPUTY DIRECTOR, DIVISION OF HIGHWAYS

BLANK, WESSELINK, COOK & ASSOCIATES
ENGINEERS - CONSULTANTS
DECATUR, ILLINOIS



[Signature]
SHEELA J. KIMLINGER, P.E., S.E.
DATE September 27 20 05
EXPIRES NOVEMBER 30, 2005

PRINTED BY THE AUTHORITY OF THE STATE OF ILLINOIS
VERMILION COUNTY

PROJECT ENGINEER: KENSIL GARNETT
CONSULTANT LIAISON: NANCY FASIG PHONE: 217-465-4181

CONTRACT NO. 70381