

STATE OF ILLINOIS
DEPARTMENT OF TRANSPORTATION

FEDERAL DIST. NO.	STATE	FED. AID PROJ. NO.	FISCAL YEAR	SHEET NO.	TOTAL SHEETS
	IOWA			38	40
	ILLINOIS				

GENERAL NOTES

Continuous Seal Neoprene Expansion Joint shall consist of molded anchor blocks of elastomer and steel, field assembled over continuous lengths of elastomeric membrane. See Special Provisions.

The elastomeric membrane shall be premolded with a single or a double upward convolution that will have a "memory" to return to its molded position upon joint closure.

The steel reinforcement must extend up the back face of anchor blocks when asphalt surfaces are used but is optional in concrete blockout.

The convolution length shall be such that the extended length will not be greater than the manufactured length when the joint is fully expanded in its design range and will not protrude above the anchor blocks when the joint is fully compressed.

Joint openings shall be adjusted in accordance with Article 503.07(c) of the Standard Illinois Specifications when the deck is poured at an ambient temperature other than 50°F.

The parapet and sidewalk flaps may be furnished factory vulcanized to the roadway membrane provided the centerline of the convolution is maintained and the process and method meet the approval of the Engineer.

Joint shall be continuous through median curb.

Payment shall be 1.00 per foot measured gutterline to gutterline.

INSTALLATION NOTES

Use anchor blocks and continuous seal as anchor bolt location templates.

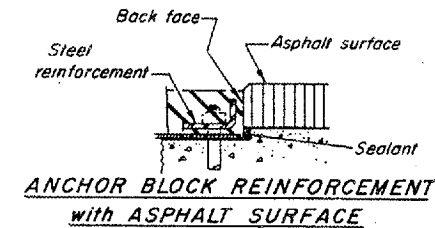
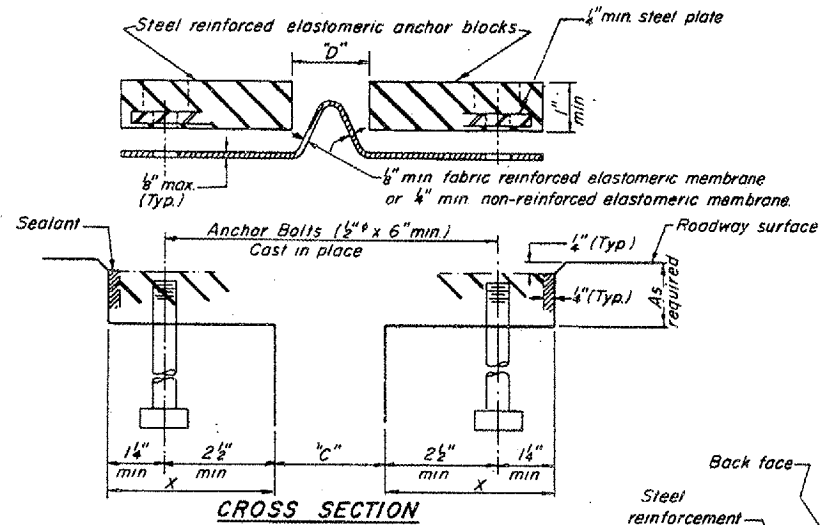
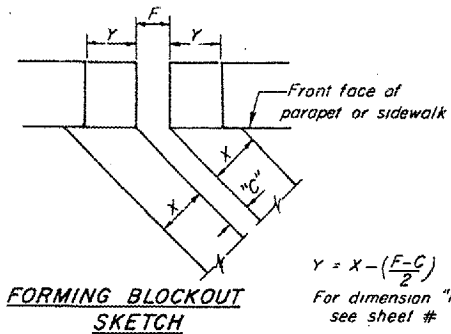
- 1 Install sponge mandrels into positions shown to form flap convolution
- 2 Install parapet or sidewalk piece (trim roadway flap to fit before applying epoxy).
- 3 Install continuous seal in roadway.
- 4 Install anchor blocks as indicated

NOTE A - Maximum spacing of anchor bolts shall be 12" centers

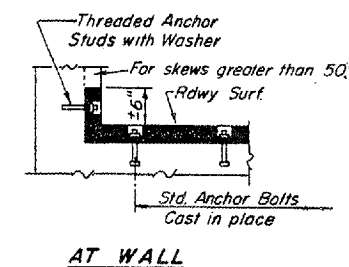
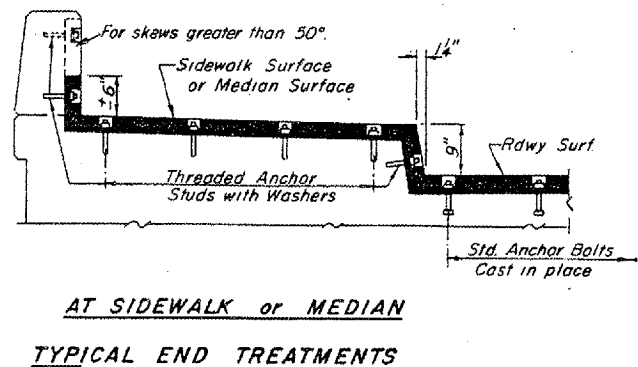
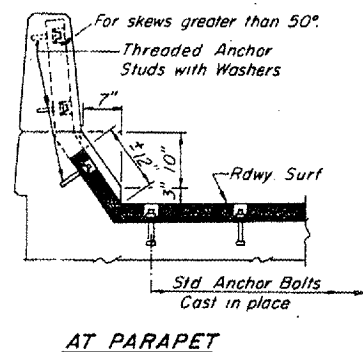
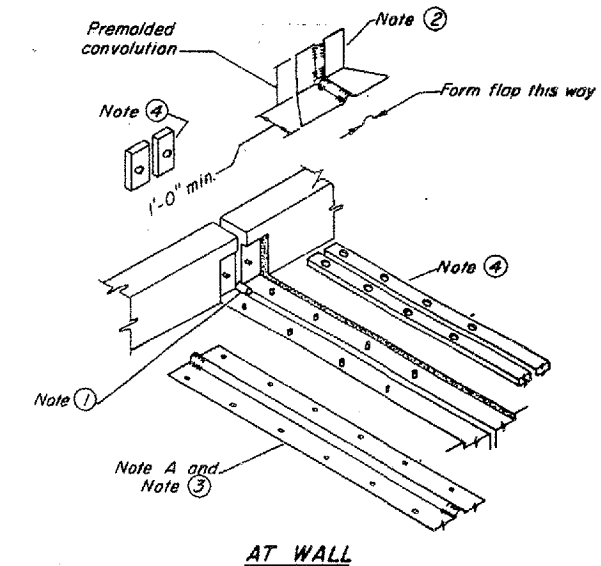
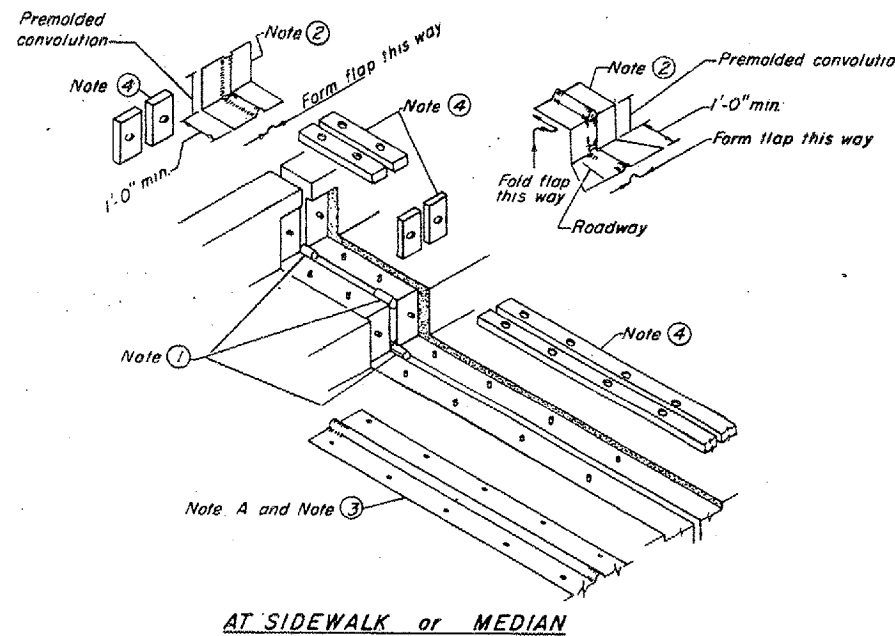
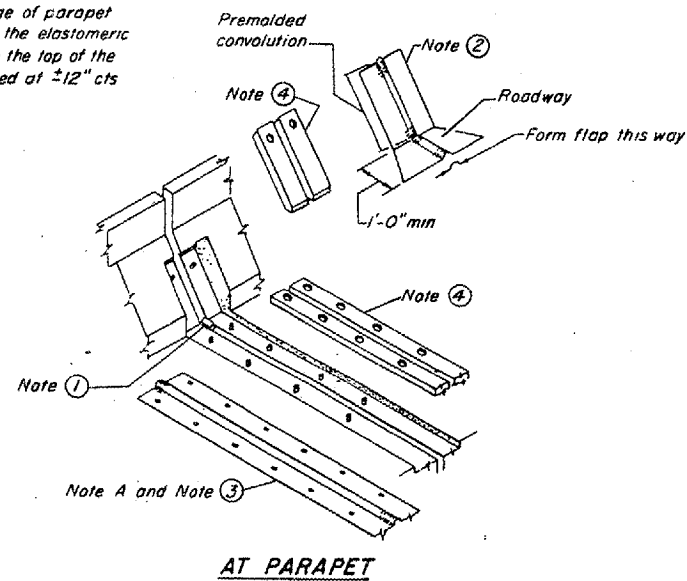
SKEW LIMITATIONS

The details of the anchor blocks and the elastomeric membrane in the parapet, as shown, are for up to 50° skews

For skews greater than 50°, the anchor blocks and the elastomeric membrane, installed in accordance with dimension "D", might require modifications to insure a minimum clearance of 1/2" from centerline of anchor studs to edge of parapet opening. The anchor blocks and the elastomeric membrane shall also be installed to the top of the parapet with the anchor studs spaced at 2 1/2" cts



Joint Size	ΔC at 50°F	ΔD at 50°F
4	3"	2 1/2" Min.



MISSISSIPPI RIVER BRIDGE
KEOKUK, IOWA - HAMILTON, ILLINOIS

STEEL ALTERNATE

DESIGN FOR 0° SKEW
3340' x 64' CONTINUOUS WELDED
PLATE GIRDER BRIDGE

ABUTMENT EXPANSION JOINT DETAILS

Sheet provided by
Illinois DOT, Standard
Sheet EJ-CS 2-1-83

STA. 90+40.00
RIVER MILE 363.9
LEE COUNTY, IOWA

PROJECT NO. BRP-18-1(3)-38-56
HANCOCK COUNTY, ILLINOIS

DESIGN SHEET 92 OF

DESIGN NO. 282 LEE COUNTY FILE 28723 SHEET 92 OF 227

FOR INFORMATION ONLY

8787-25-00

HOWARD NEEDLES TAMMEN & BERGENDOFF **HNTB**
MADE CTE DATE 3-22-83 CHECKED DLM DATE J-83