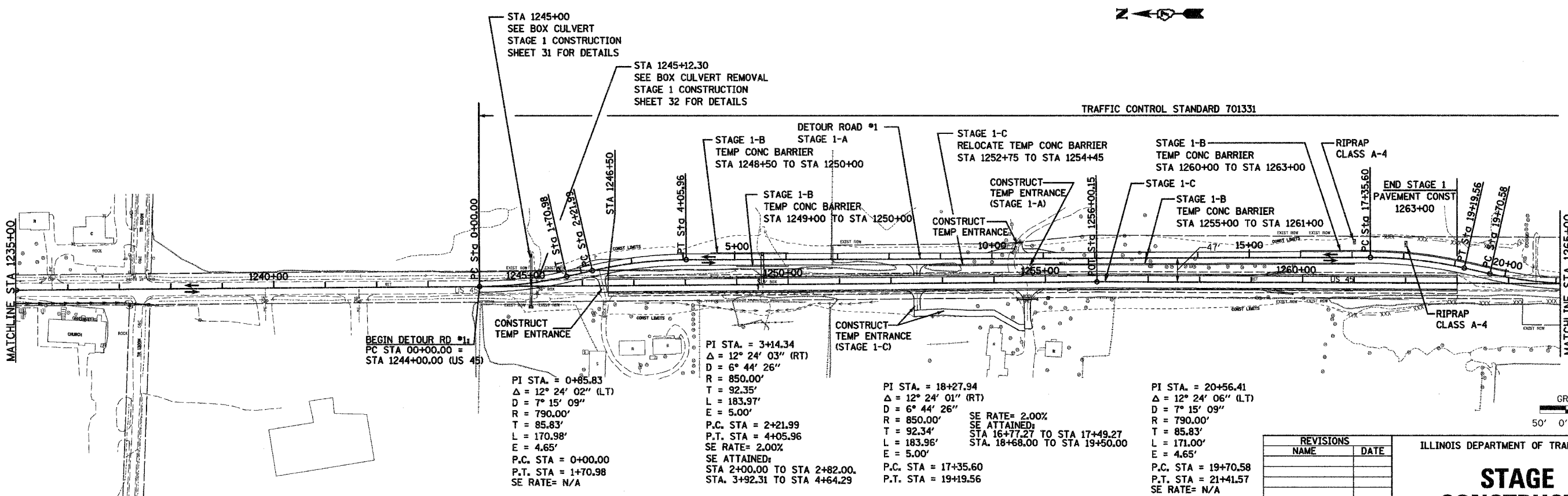
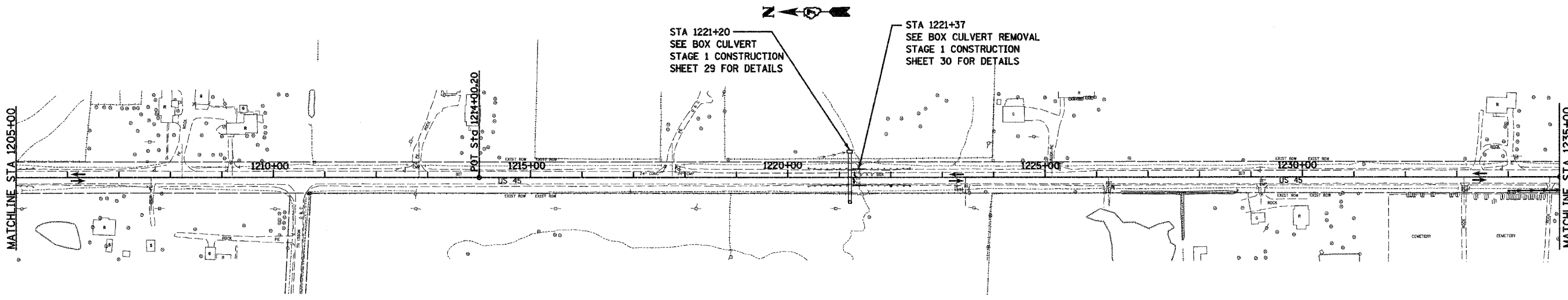


F.A.P. RTE.	SECTION	COUNTY	TOTAL SHEETS	SHEET NO.
328	5R, Y, RS-1	CLAY	242	22
STA.		TO STA.		
FED. ROAD DIST. NO. 7 ILLINOIS		FED. AID PROJECT		
CONTRACT NO. 74078				



BEGIN DETOUR RD #1  
PC STA 00+00.00 =  
STA 1244+00.00 (US 45)

PI STA. = 0+85.83  
Δ = 12° 24' 02" (LT)  
D = 7° 15' 09"  
R = 790.00'  
T = 85.83'  
L = 170.98'  
E = 4.65'  
P.C. STA = 0+00.00  
P.T. STA = 1+70.98  
SE RATE= N/A

PI STA. = 3+14.34  
Δ = 12° 24' 03" (RT)  
D = 6° 44' 26"  
R = 850.00'  
T = 92.35'  
L = 183.97'  
E = 5.00'  
P.C. STA = 2+21.99  
P.T. STA = 4+05.96  
SE RATE= 2.00%  
SE ATTAINED:  
STA 2+00.00 TO STA 2+82.00,  
STA. 3+92.31 TO STA 4+64.29

PI STA. = 18+27.94  
Δ = 12° 24' 01" (RT)  
D = 6° 44' 26"  
R = 850.00'  
T = 92.34'  
L = 183.96'  
E = 5.00'  
P.C. STA = 17+35.60  
P.T. STA = 19+19.56  
SE RATE= 2.00%  
SE ATTAINED:  
STA 16+77.27 TO STA 17+49.27  
STA. 18+68.00 TO STA 19+50.00

PI STA. = 20+56.41  
Δ = 12° 24' 06" (LT)  
D = 7° 15' 09"  
R = 790.00'  
T = 85.83'  
L = 171.00'  
E = 4.65'  
P.C. STA = 19+70.58  
P.T. STA = 21+41.57  
SE RATE= N/A

REVISIONS	
NAME	DATE

ILLINOIS DEPARTMENT OF TRANSPORTATION

## STAGE 1 CONSTRUCTION

SCALE: VERT.  
HORIZ.  
DATE: 10-21-05

DRAWN BY: LJ  
CHECKED BY: MAR

