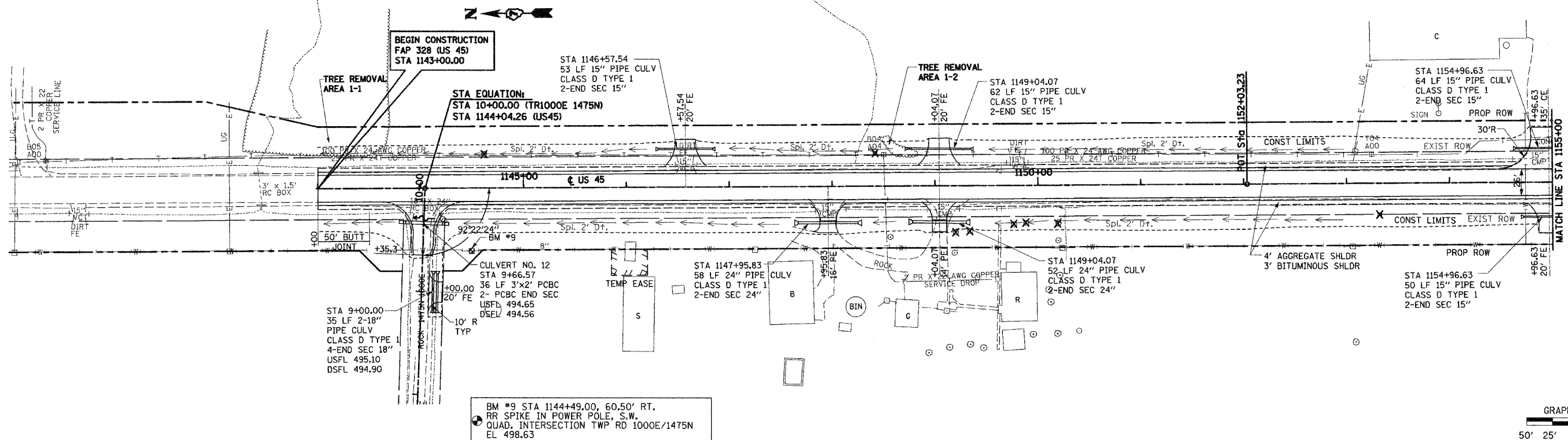


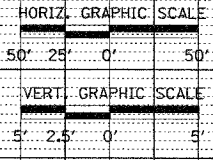
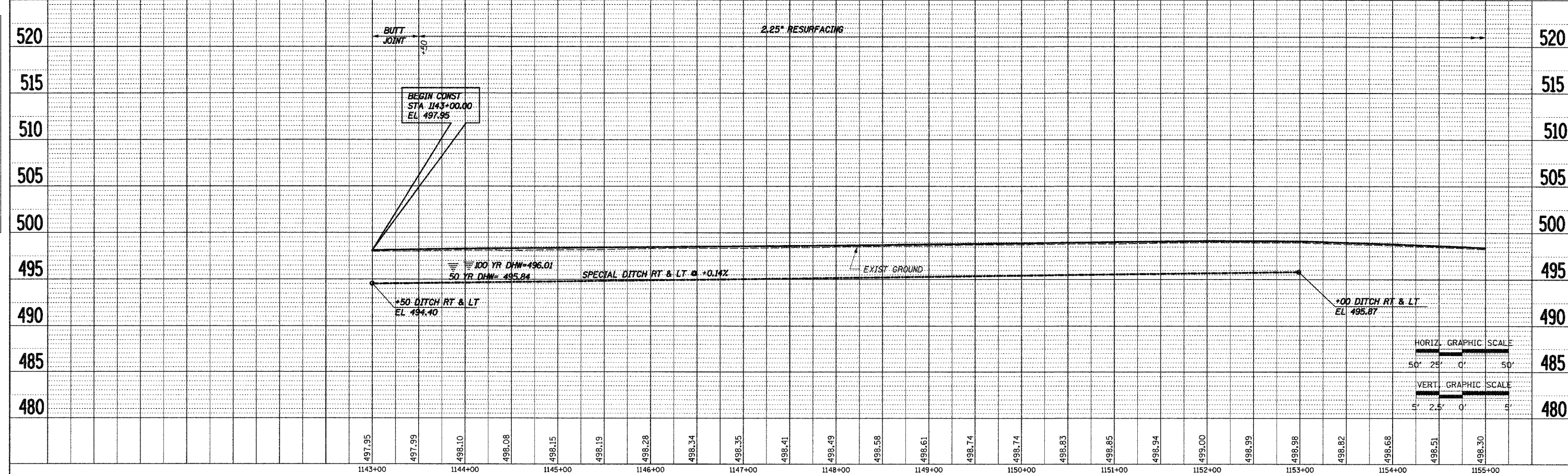
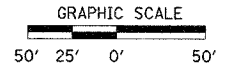
F.A.P. RTE.	SECTION	COUNTY	TOTAL SHEETS	SHEET NO.
328	5R, Y, RS-1	CLAY	242	33
STA. 1140+00		TO STA. 1155+00		
FED. ROAD DIST. NO. 7		ILLINOIS	FED. AID PROJECT	
CONTRACT NO. 74078				

DATE	BY	REVISION

DATE	BY	REVISION



BM #9 STA 1144+49.00, 60.50' RT.
RR SPIKE IN POWER POLE, S.W.
QUAD, INTERSECTION TWP RD 1000E/1475N
EL. 498.63



STA 1143+00 TO STA 1155+00