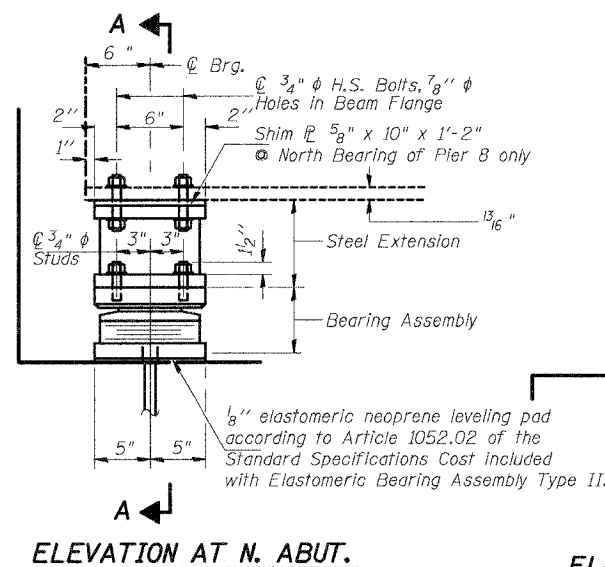


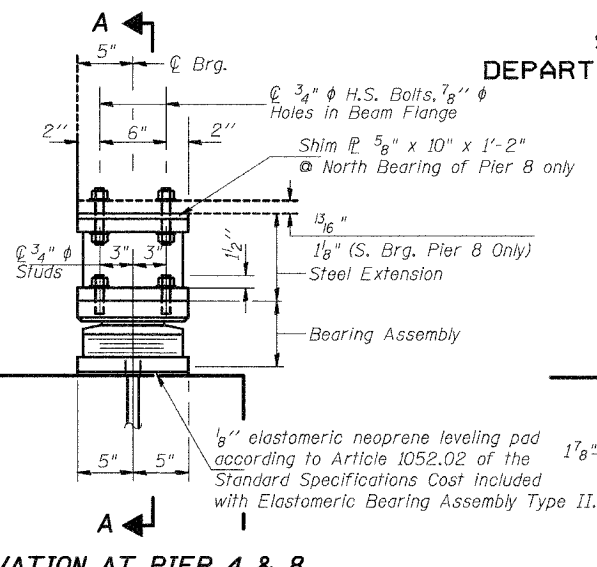
STATE OF ILLINOIS
DEPARTMENT OF TRANSPORTATION

ROUTE NO.	SECTION	COUNTY	JOB SHEETS	SHEET NO.	SHEET NO. 7 17 SHEETS
F.A.P. 328	5BR,RS-1	CLAY	242	69	
CONTRACT NO. 74078					

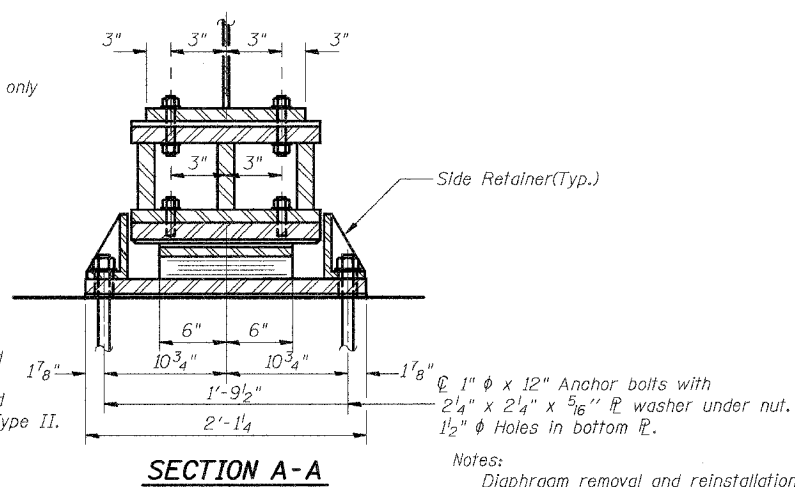
	N. Abut.	Pier 4	N. Brg. Pier 8	S. Brg. Pier 8
RP (k)	24.6	24.6	24.6	22.8
RSP (k)	---	---	---	9.3
R _L (k)	43.9	43.9	43.9	46.2
Imp. (k)	12.3	12.3	12.3	11.8
R (Total) (k)	80.8	80.8	80.8	90.1



ELEVATION AT N. ABUT.

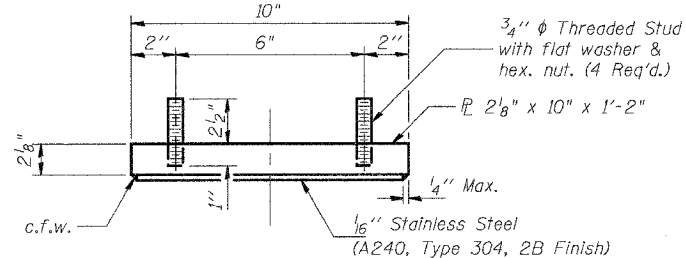


ELEVATION AT PIER 4 & 8

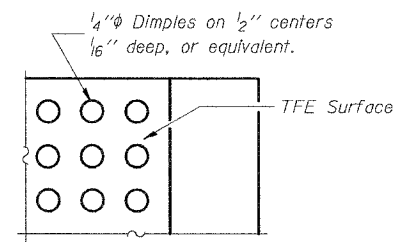


SECTION A-A

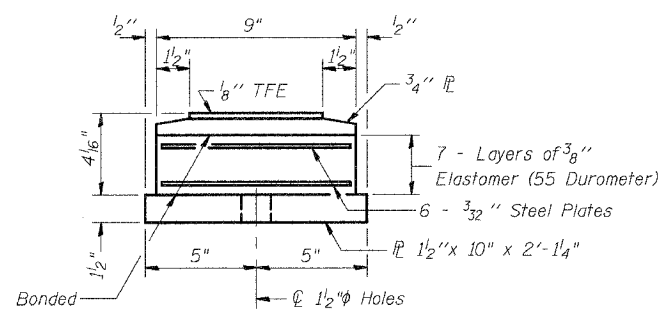
TYPE II ELASTOMERIC EXP. BRG.



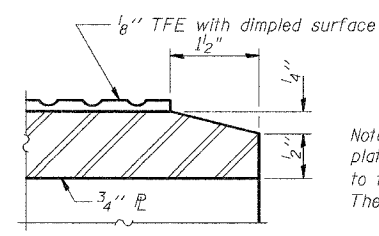
TOP BEARING ASSEMBLY



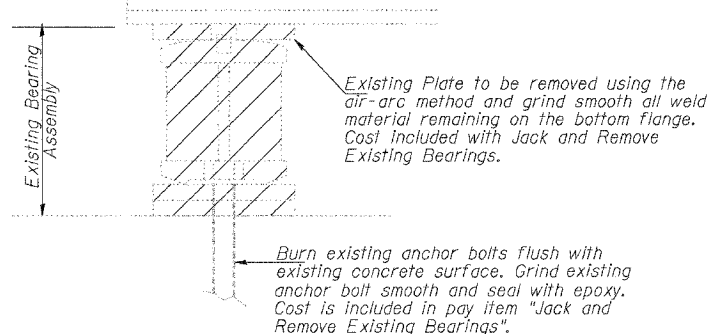
PLAN-TFE SURFACE



BOTTOM BEARING ASSEMBLY



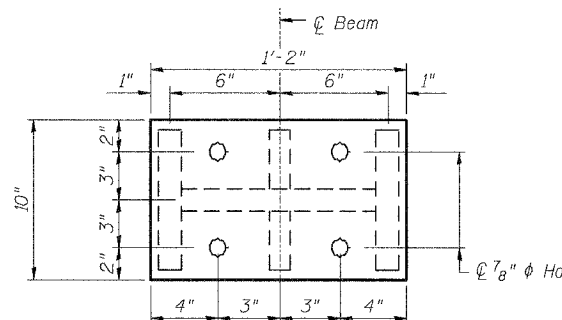
SECTION THRU TFE



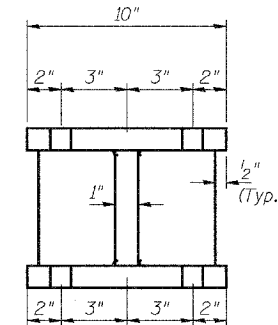
EXISTING BEARING REMOVAL DETAIL

Note: The 1/8" TFE sheet shall be bonded directly to the top steel plate with a two-component, medium viscosity epoxy resin, conforming to the requirements of the Federal Specification MMM-A-134, Type I. The bond agent shall be applied on the full area of the contact surfaces.

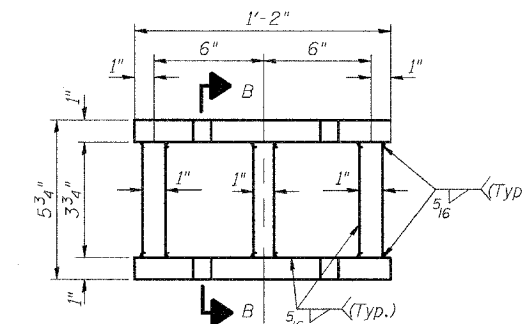
Bonding of 1/8" TFE sheet during vulcanizing process will be permitted provided the process and method of adjusting assembly height is approved by the Engineer.



PLAN STEEL EXTENSION



SECTION B-B



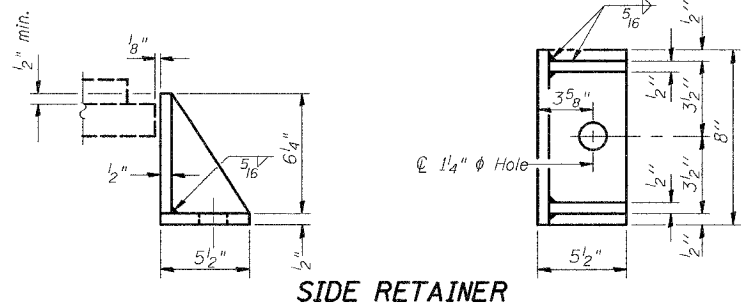
ELEVATION STEEL EXTENSION

BILL OF MATERIAL

Item	Unit	N. Abut.	Pier 4	Pier 8 N.	Pier 8 S.	Total
Elastomeric Bearing Assembly Type II	Each	5	10	5	5	25
Furnish & Erect Structural Steel	Lbs.	820	1640	950	820	4230
Jack & Remove Exist. Bearing	Each	5	10	5	5	25

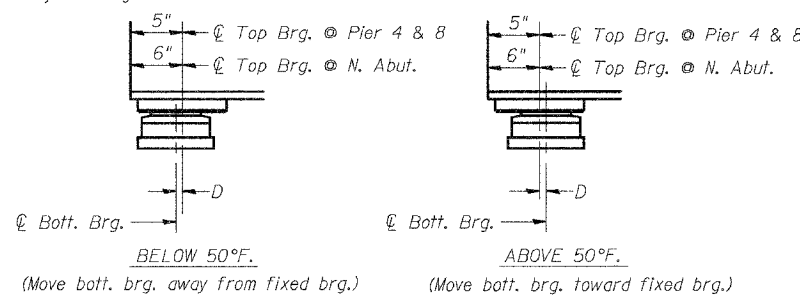
ELASTOMERIC BEARING, TYPE II
NORTH ABUTMENT

PIERS 4 & 8
FAP 328 - SECTION 5BR-2
OVER LITTLE WABASH RIVER
CLAY COUNTY
STATION 1281+15
STRUCTURE NO. 013-0010



SIDE RETAINER

Equivalent rolled angle with stiffeners will be allowed in lieu of welded plates. Weight included with Structural Steel.



SETTING ANCHOR BOLTS AT EXP. BRG.

D = 1/8" per each 100' of expansion for every 15° temp. change from the normal temp. of 50°F.

DESIGNED	B.W.P.
CHECKED	R.P.B.
DRAWN	D.J.S.
CHECKED	R.P.B.

I-2-E2 4-30-99