

STATE OF ILLINOIS  
DEPARTMENT OF TRANSPORTATION

ROUTE NO.	SECTION	COUNTY	TOTAL SHEETS	SHEET	SHEET NO. 12
F.A.P. 328	5BR, YRS-1	CLAY	242	74	17 SHEETS
FED. ROAD DIST. NO. 7		ILLINOIS	FED. AID PROJECT-		
CONTRACT NO. 74078					

**GENERAL NOTES**

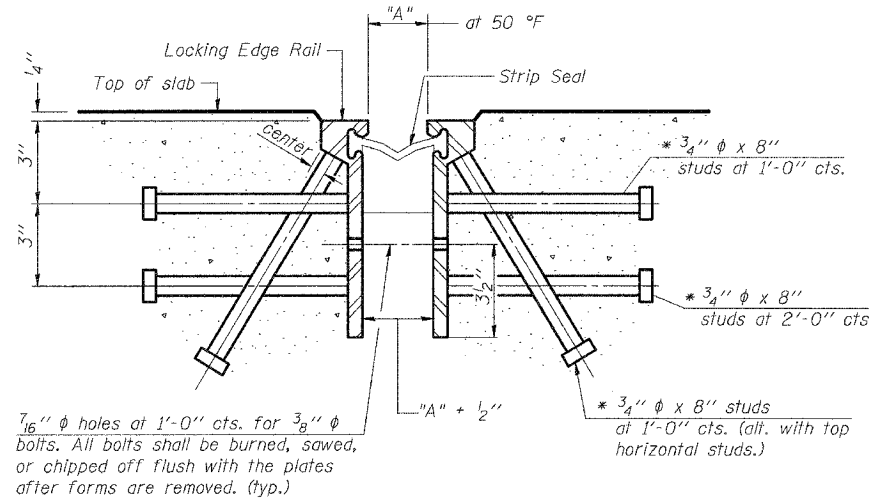
The strip seal shall be made continuous and shall have a minimum thickness of  $\frac{1}{4}$ ". The configuration of the strip seal shall match the configuration of the Locking Edge Rails.

The height and thickness of the Locking Edge Rails shown are minimum dimensions. The actual configuration of the Locking Edge Rails and matching strip seal may vary from manufacturer to manufacturer. Flanged edge rails will not be allowed.

Locking Edge Rails may be spliced at slope discontinuities and stage construction joints.

The manufacturer's recommended installation methods shall be followed.

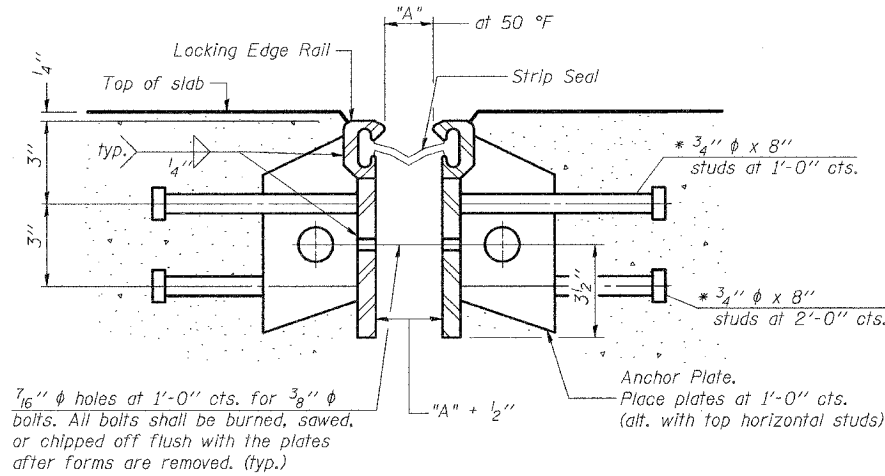
The joint opening and deck dimensions detailed on the superstructure are based on a preformed joint seal. If the contractor elects to use the alternate strip seal joint, the opening and deck dimensions shall be modified according to the dimensions detailed on this sheet. Required modifications shall be made at no additional cost to the State.



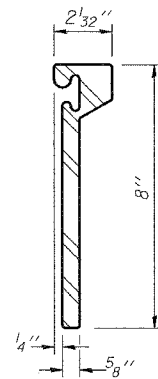
**SECTION THRU ROLLED RAIL EXP. JOINT**  
( Studs Required)

Required Strip Seal rated movement	"A"
1"	1 1/8"
2"	1 3/4"

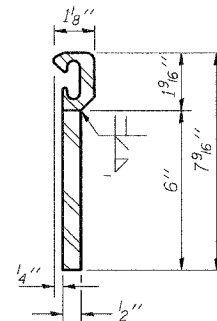
\* Granular or solid flux filled headed studs conforming to Article 1006.32 of the Std. Specs., automatically end welded.



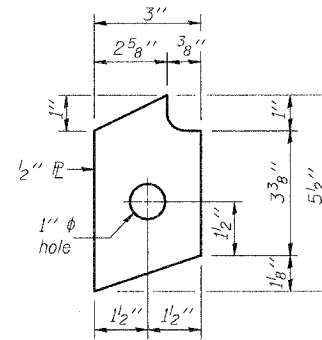
**SECTION THRU WELDED RAIL EXP. JOINT**  
( Studs Required)  
( Anchor Plates Required)



**ROLLED (EXTRUDED) RAIL**

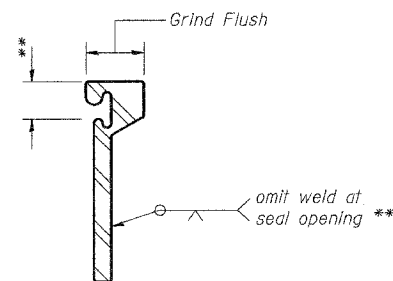


**WELDED RAIL**



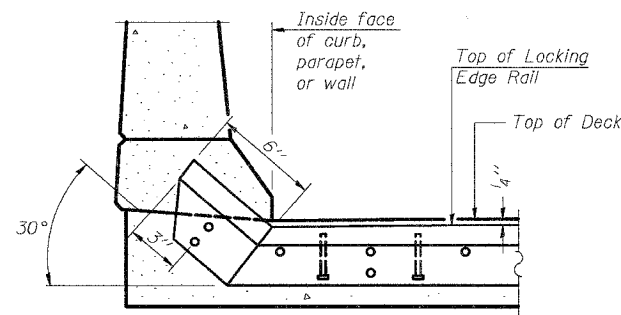
**ANCHOR PLATE**  
(for welded rail)

**LOCKING EDGE RAILS**

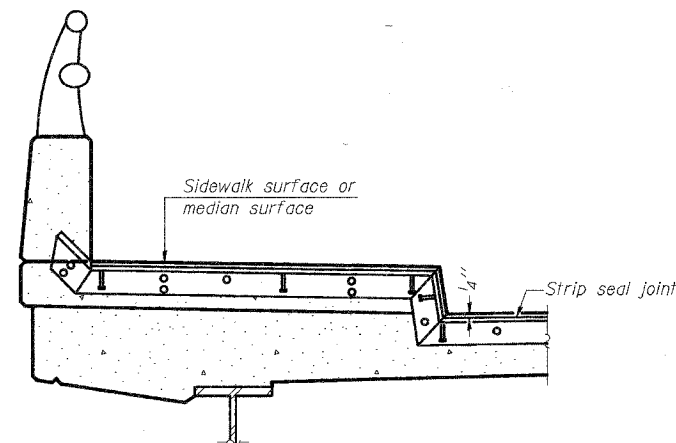


**LOCKING EDGE RAIL SPLICE**

The inside of the locking edge rail groove shall be free of weld residue.



**AT CURB, PARAPET, OR WALL**



**AT SIDEWALK OR MEDIAN\***

**TYPICAL END TREATMENTS**

\* Shorter plates with a single row of studs at 12" centers may be necessary on medians which are shallower than 9". See manufacturer's recommendation.

**BILL OF MATERIAL**

Item	Unit	Total
Strip Seal Expansion Joint Assembly	Foot	70

(Sheet 2 of 2)

**BRIDGE JOINT SYSTEM - EXPANSION**  
**(ALTERNATE-STRIP SEAL)**  
**FAP 328 - SECTION 5BR-2**  
**OVER LITTLE WABASH RIVER**  
**CLAY COUNTY**  
**STATION 1281+15**  
**STRUCTURE NO. 013-0010**

DESIGNED - B.W.P.	20
CHECKED - R.P.B.	EXAMINED
DRAWN - B.W.P.	ENGINEER OF BRIDGE DESIGN
CHECKED - R.P.B.	PASSED
EJ-BJS 9-01-03	ENGINEER OF BRIDGES AND STRUCTURES