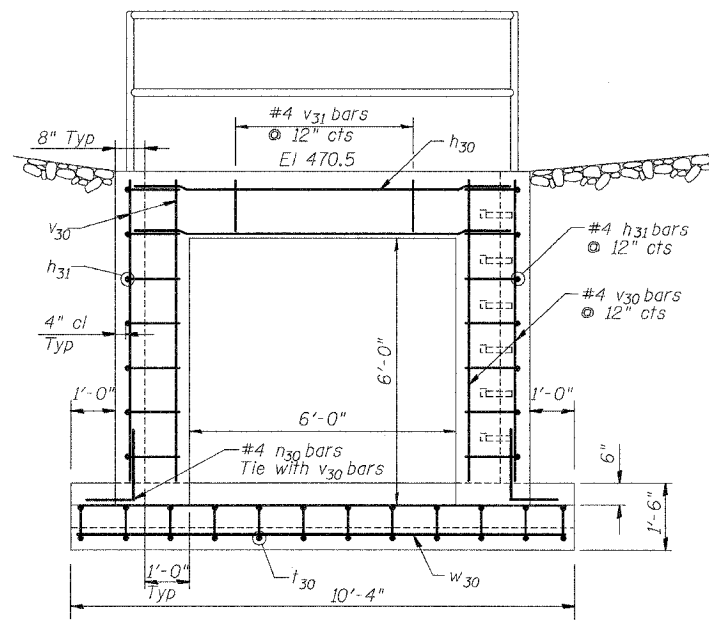


STATE OF ILLINOIS
DEPARTMENT OF TRANSPORTATION

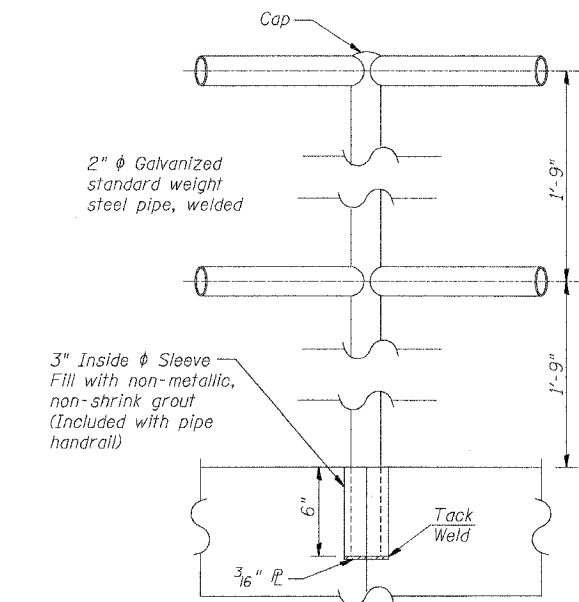
FAP RTE	SECTION	COUNTY	TOTAL SHEETS	SHEET NO
328	5R, Y, RS-1	CLAY	242	91
STA	TO STA		ILLINOIS US 45	

CONTRACT NO. 74078

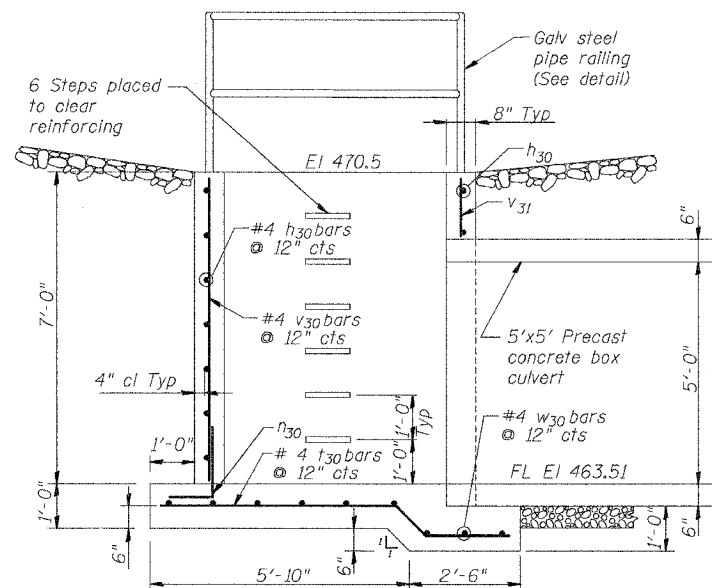


ELEVATION

(Looking West)

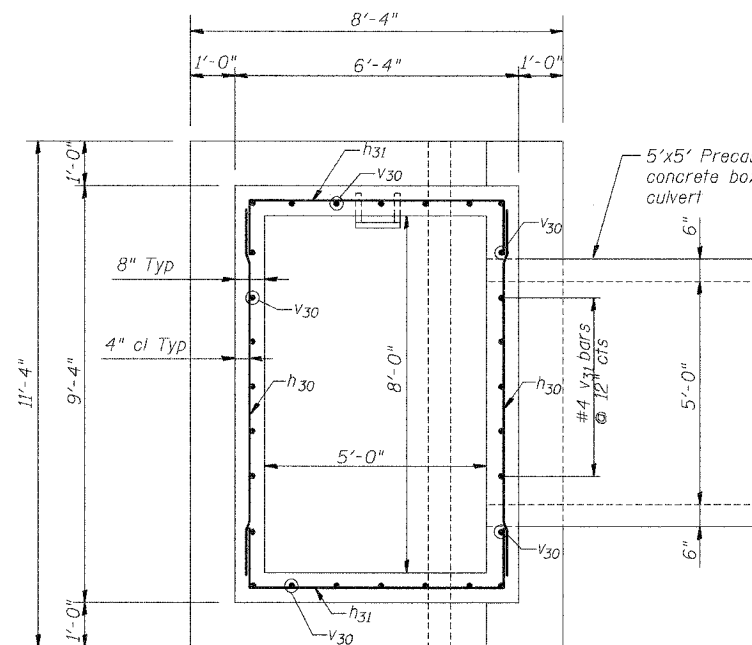


PIPE RAILING DETAIL



ELEVATION

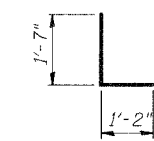
(Looking North)



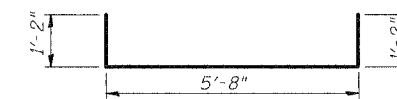
PLAN

BAR LAP

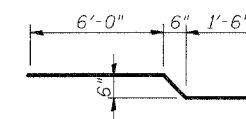
#4 - 1'-1"



BAR n30



BAR h31



BAR t30

GENERAL NOTES

Class SI Concrete shall be used throughout.

Reinforcement shall conform to the requirements of AASHTO M-31 or M-53 Grade 60.

Exposed edges shall be chamfered 3/4"

Steps shall be Gray Cast Iron conforming to the requirements of Standard 602701. Steps will not be paid for separately but will be considered as included in the contract unit price per cubic yard for Class SI Concrete and no additional compensation will be allowed.

Steps shall be embedded into the wall a minimum of 3 inches. Steps shall not be extended on the outside.

Steel pipe shall conform to the requirements of ASTM A-120.

All posts, railing, & sleeves shall be galvanized after shop fabrication in accordance with AASHTO M-111 and ASTM A-385.

Galvanized material shall not be painted.

Place 1 - 3" ϕ weep hole on north, south, and west walls, 1' up from flow line elevation.

BILL OF MATERIAL

Bar	No.	Size	Length	Shape
h30	9	#4	8'-6"	┌───┐
h31	14	#4	8'-0"	┌───┐
n30	23	#4	2'-9"	┌───┐
t30	12	#4	8'-2"	┌───┐
v30	23	#4	6'-10"	───
v31	5	#4	1'-2"	───
w30	12	#4	11'-0"	───
Class SI Concrete			Cu Yd	7.6
Reinforcing Bars			Lb	430
Pipe Handrail			Foot	29

SPECIAL DROP INLET #3
FAP 328 (US 45)
CLAY COUNTY STA 1249+50

HR HURST-ROSCHKE ENGINEERS, INC.
CONSULTING ENGINEERS & ARCHITECTS
1400 E. TREMONT ST.
HILLSBORO, ILLINOIS 62049

DESIGNED	JLG
CHECKED	RPB
DRAWN	BAD
CHECKED	RPB