

F.A.P. RTE.	SECTION	COUNTY	TOTAL SHEETS	SHEET NO.
314	108BR-I	MADISON	123	28
STA. 266+50		TO STA. 272+50		
FED. ROAD DIST. NO.		ILLINOIS FED. AID PROJECT		

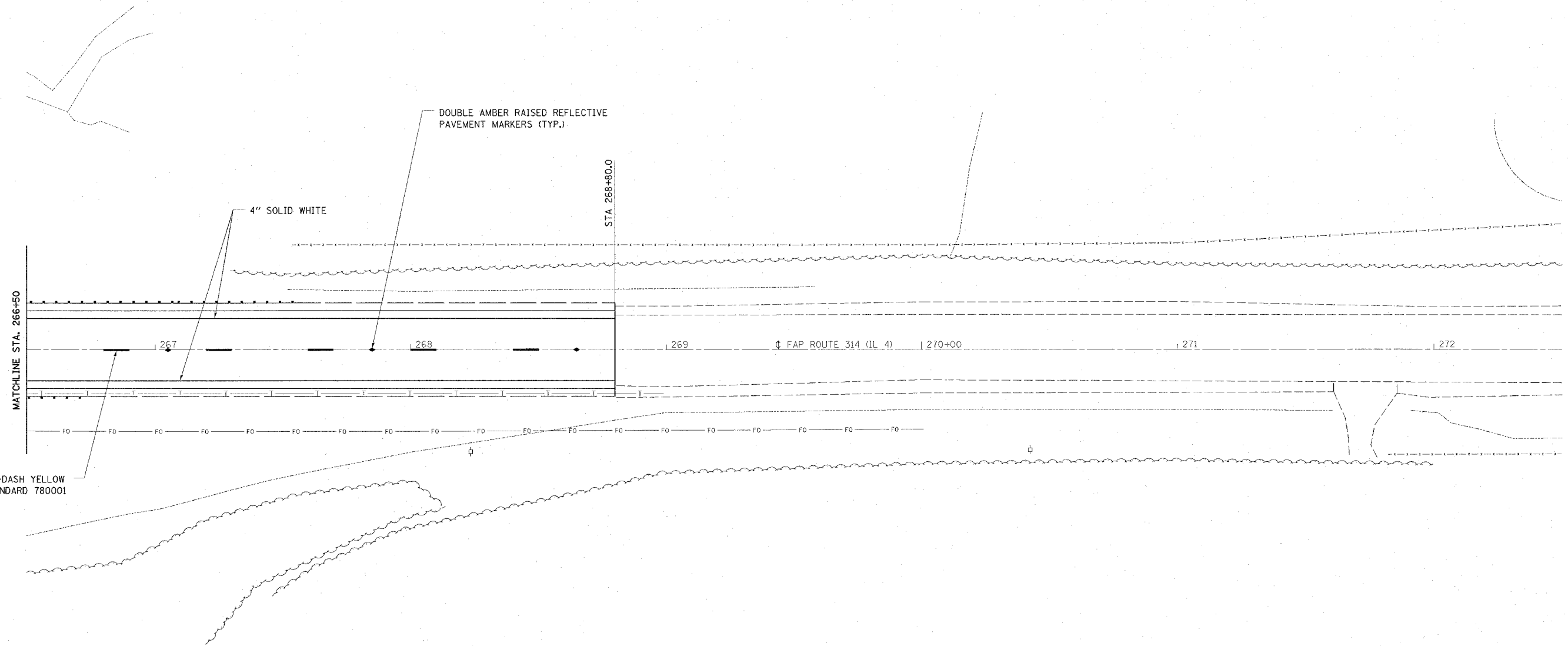
STA 266+50 TO STA 268+80

THERMOPLASTIC PAVEMENT MARKING LINES

- 4" YELLOW 50 FT
- 4" WHITE 460 FT

RAISED REFLECTIVE PAVEMENT MARKERS

- DOUBLE AMBER 3 EACH



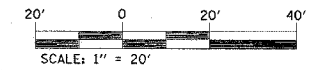
4" SKIP-DASH YELLOW
SEE STANDARD 780001

DOUBLE AMBER RAISED REFLECTIVE
PAVEMENT MARKERS (TYP.)

4" SOLID WHITE

STA 268+80.0

MATCHLINE STA. 266+50



REVISIONS	
NAME	DATE

ILLINOIS DEPARTMENT OF TRANSPORTATION
PAVEMENT MARKING
FAP ROUTE 314
SECTION 108BR-I
MADISON COUNTY
SN 060-0106(E) 0334(P)

PLOT DATE = 10/26/2005
FILE NAME = c:\p\proj\sect\108br\108br\108br.dgn
PLOT SCALE = 28.0000 / IN.
REFERENCE = #REF#