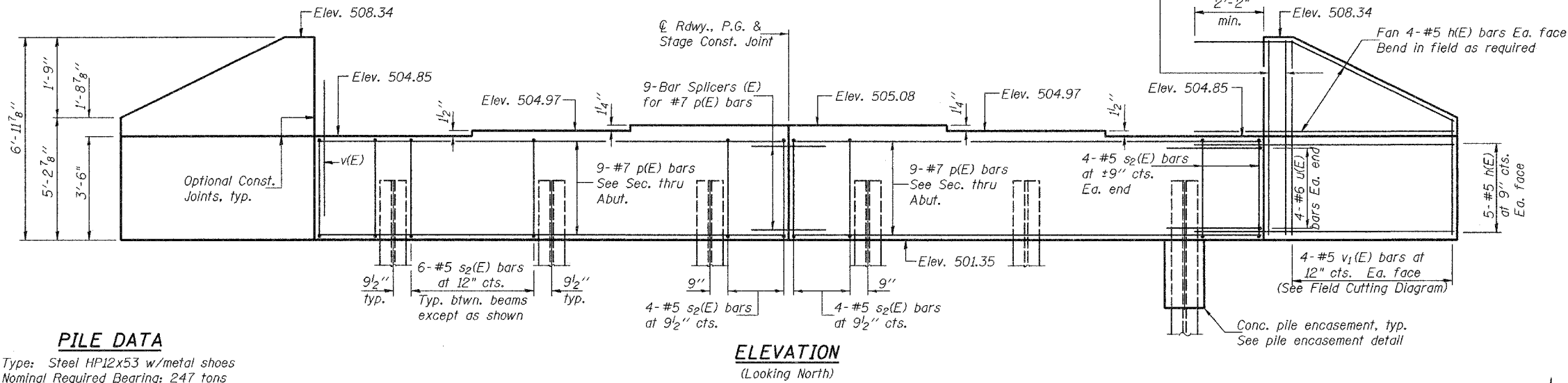


STATE OF ILLINOIS
DEPARTMENT OF TRANSPORTATION

ROUTE NO.	SECTION	COUNTY	TOTAL SHEETS	SHEET NO.
FAP 314	108BR-1	MADISON	123	43
SHEET NO. 15 29 SHEETS				

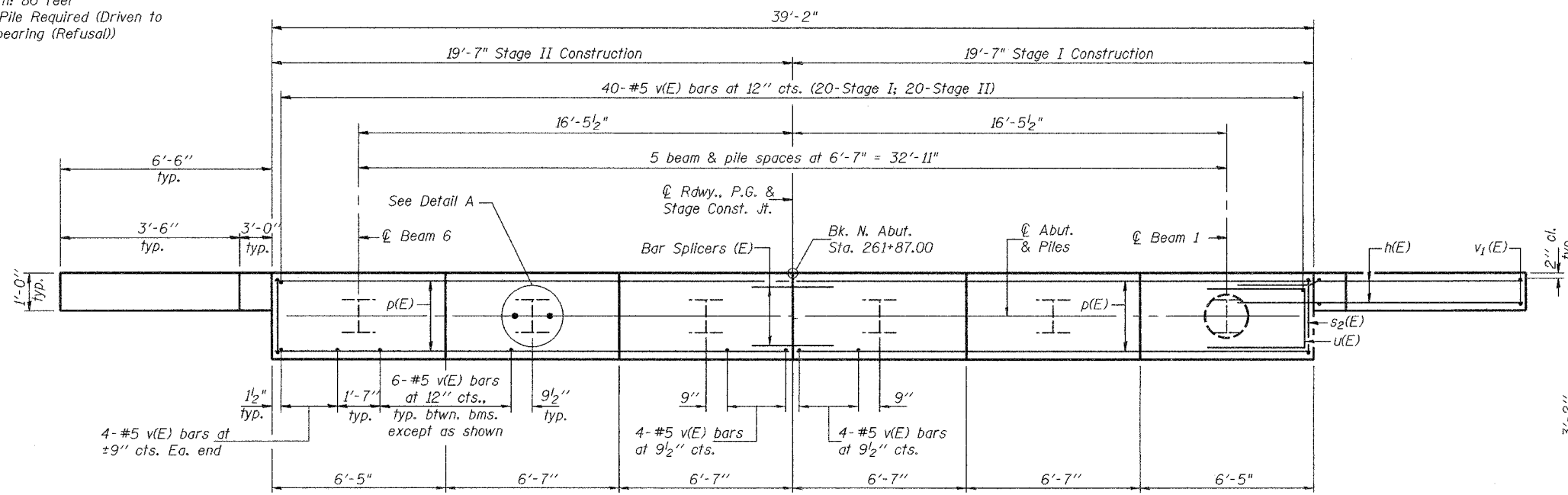
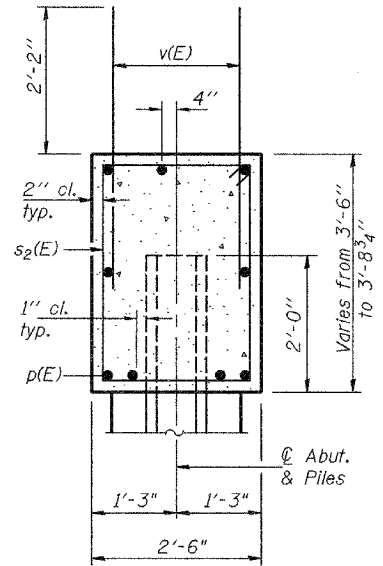
Contract #76454

Notes:
Pour steps monolithically with cap.
Reinforcement bars designated (E) shall be epoxy coated.
For anchor bolt installation details see sheet 14 of 29.
For bar splicer assembly details see sheet 21 of 29.



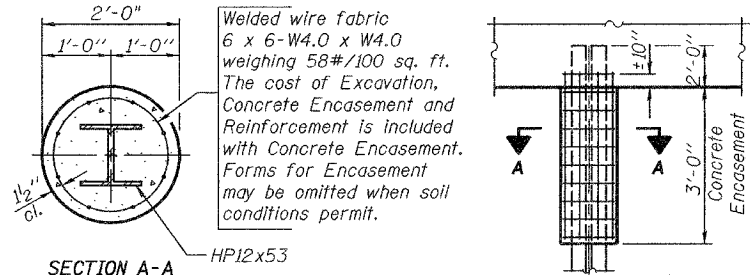
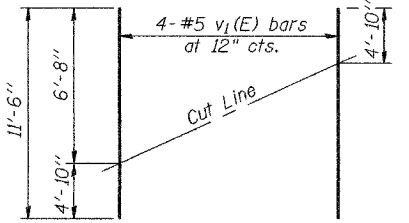
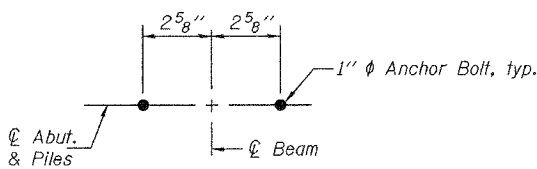
PILE DATA

Type: Steel HP12x53 w/metal shoes
Nominal Required Bearing: 247 tons
Nominal Design Capacity: 164 tons
Est. Length: 80 feet
One Test Pile Required (Driven to 419 tons bearing (Refusal))

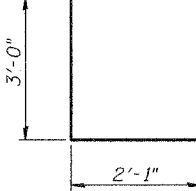


BILL OF MATERIAL

Bar No.	Size	Length	Shape
h(E)	#5	9'-0"	
p(E)	#7	19'-3"	
s ₂ (E)	#5	11'-7"	□
u(E)	#6	8'-1"	□
v(E)	#5	4'-4"	
v ₁ (E)	#5	11'-6"	
v ₂ (E)	#5	6'-7"	
Concrete Structures	Cu. Yd.	16.3	
Reinforcement Bars, Epoxy Coated	Pound	2170	
Structure Excavation	Cu. Yd.	95.4	
Furnishing Steel Piles HP12x53	Foot	400	
Driving Steel Piles	Foot	400	
Test Pile Steel HP12x53	Each	1	
Metal Shoes	Each	5	
Concrete Encasement	Cu. Yd.	2.0	



BAR s₂(E)



DESIGNED	Curt M. Evoy
CHECKED	Tom L. Kurtenbach
DRAWN	h.t. duong
CHECKED	CME/TLK

November 17, 2005
EXAMINED *Thomas J. Domagala*
PASSED *Ralph E. Anderson*
ENGINEER OF BRIDGES AND STRUCTURES

NORTH ABUTMENT
F.A.P. RTE. 314 - SEC. 108BR-1
MADISON COUNTY
STATION 263+51
STRUCTURE NO. 060-0334