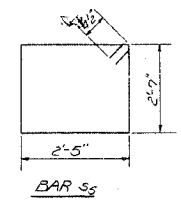
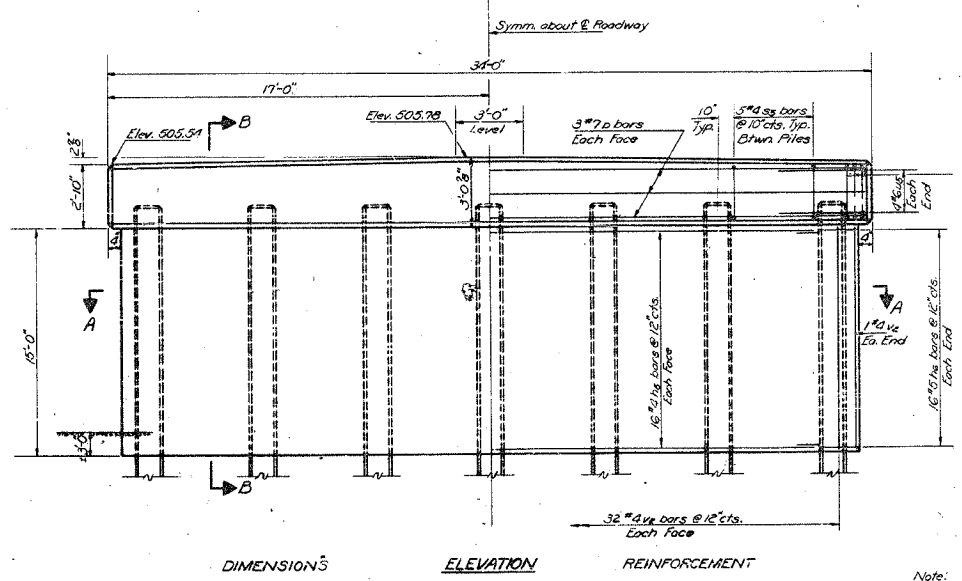
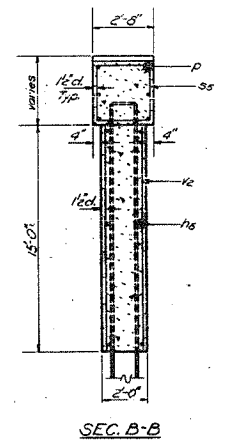
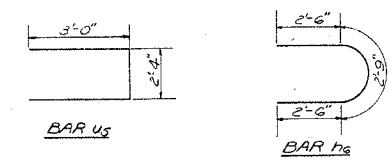
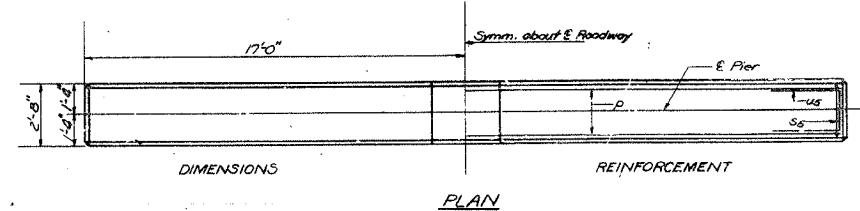


F.A.P. RTE.	SECTION	COUNTY	TOTAL SHEETS	SHEET NO.
314	108BR-1	MADISON	123	62
STA.	TO STA.			
FED. ROAD DIST. NO.	ILLINOIS	FED. AID PROJECT		

STATE OF ILLINOIS  
DEPARTMENT OF TRANSPORTATION

PROJECT NO.	SECTION	SHEET NO.	TOTAL SHEETS
60	MADISON	38	15
SHEET NO. 8 // SHEETS			

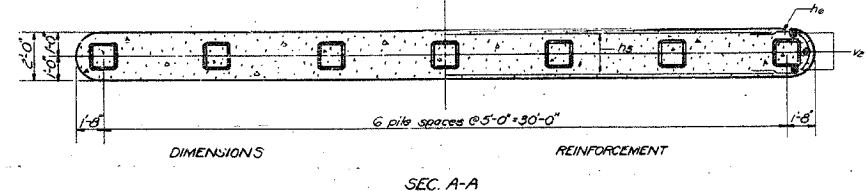
**PILE DATA**  
Type: Concrete  
Capacity: 45 Tons  
Est. Length: 48'0"  
No. Required: 7



**BILL OF MATERIAL**

Bar	No.	Size	Length	Shape
hs	36	#4	31'-3"	U
hs	32	#4	7'-8"	U
p	6	#7	33'-9"	—
us	36	#4	10'-5"	U
us	6	#6	3'-4"	U
hs	66	#4	11'-9"	—
Class I Concrete		Cu. Yd.	43.6	
Reinforcement Bars		Pounds	2260	
Concrete Piles		Lin. Ft.	336	

Note: All edges shall have 1/4" chamfers except as noted.



DESIGNED: *Stacy S. Linn*  
CHECKED: *David A. Blanton*  
DRAWN: *J. Sutherland, R.D.*  
CHECKED: *Bill S.L.*

EXAMINED: *[Signature]*  
PASSED: *[Signature]*  
APPROVED: *[Signature]*  
DIRECTOR OF HIGHWAYS

**PIER 4**  
F.A. RT. 68 SEC. 108 BR  
MADISON COUNTY  
STATION 264+00

FOR INFORMATION ONLY

REVISIONS	
NAME	DATE

ILLINOIS DEPARTMENT OF TRANSPORTATION  
**EXISTING STRUCTURE PLANS**  
FAP ROUTE 314  
SECTION 108BR-1  
MADISON COUNTY

PLOT DATE = 10/6/2005  
FILE NAME = c:\p\pro\sects\ed02701\plan\pln02701a06.dgn  
SCALE = 1/8" = 1'-0"  
REFERENCE = #REF#