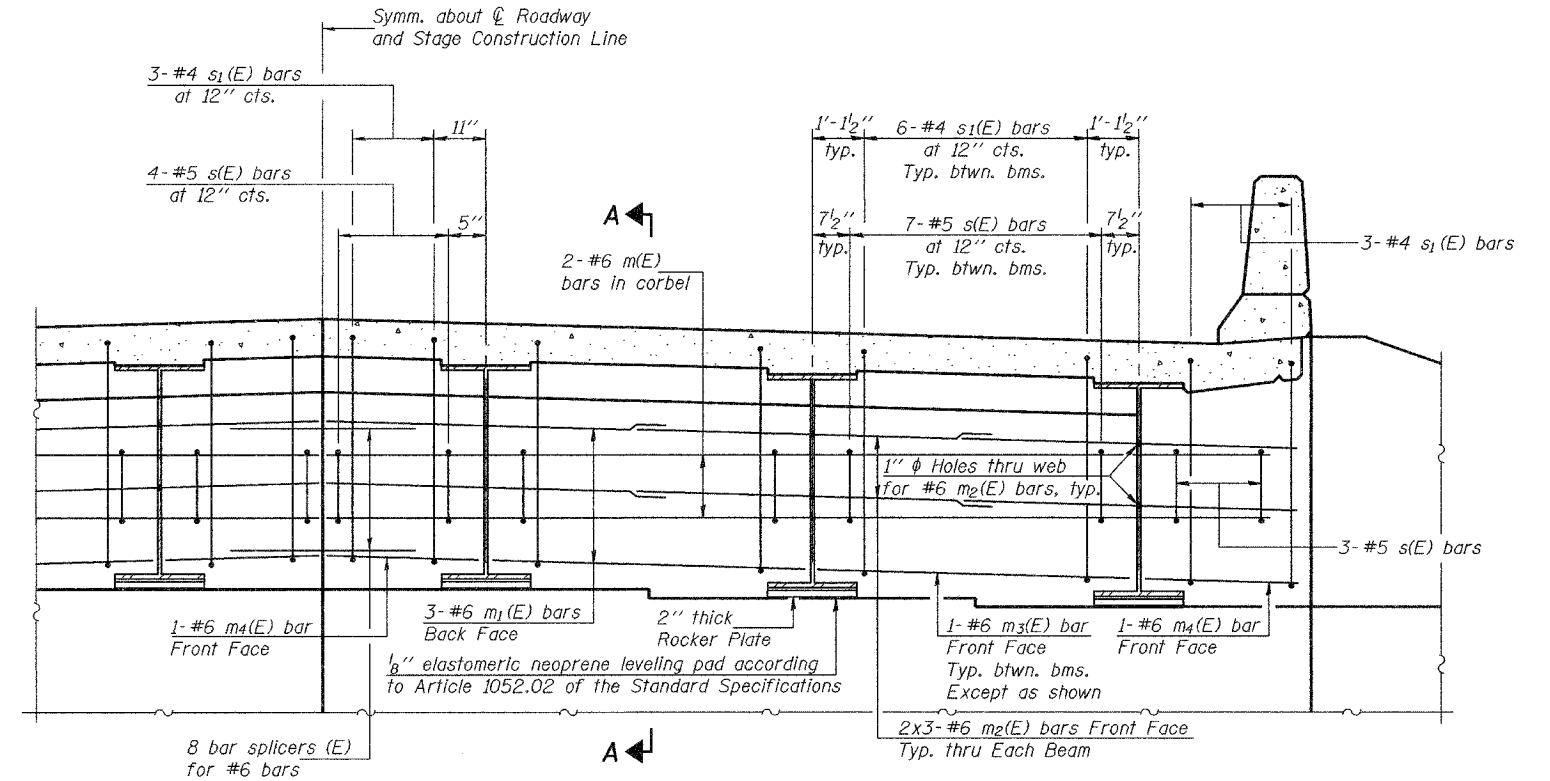
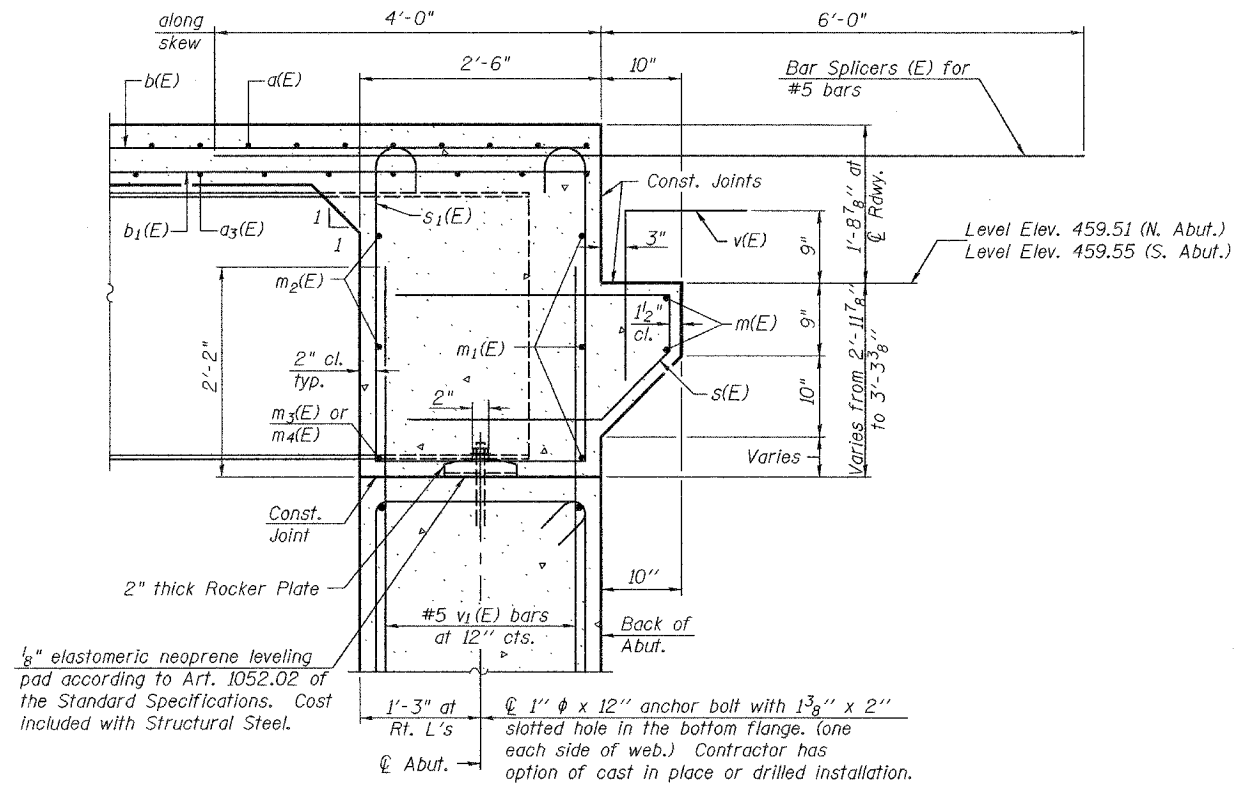


STATE OF ILLINOIS
DEPARTMENT OF TRANSPORTATION

ROUTE NO.	SECTION	COUNTY	TOTAL SHEETS	SHEET NO.	SHEET NO.
FAP 314	111BR-1	MADISON	123	99	17 SHEETS
FED. ROAD DIST. NO. 7	ILLINOIS FED. AID PROJECT				

Contract No. 76454



Notes:
Reinforcement bars in diaphragm are billed with superstructure on sheet 8 of 17.
Concrete in diaphragm is included with Concrete Superstructure on sheet 8 of 17.
For details of bars s(E) & s₁(E) see sheet 8 of 17.
The s(E) and s₁(E) bars shall be placed parallel to the beams. Spacing for these bars shall be at right angles to the beams.
For anchor bolt details see sheet 12 of 17.

MIN. BAR LAP
#6 bar = 2'-9"

DESIGNED	CEH
CHECKED	DHC
DRAWN	BECKY M. LEACH
CHECKED	CEH & DHC

November 10, 2005
EXAMINED *Thomas J. Domagalaki*
PROFESSOR OF BRIDGE DESIGN
PASSED *Ralph E. Anderson*
ENGINEER OF BRIDGES AND STRUCTURES

SI-DSI

10-22-04

DIAPHRAGM DETAILS
F.A.P. ROUTE 314 - SECTION 111BR-1
MADISON COUNTY
STATION 161+40.00
STRUCTURE NO. 060-0339