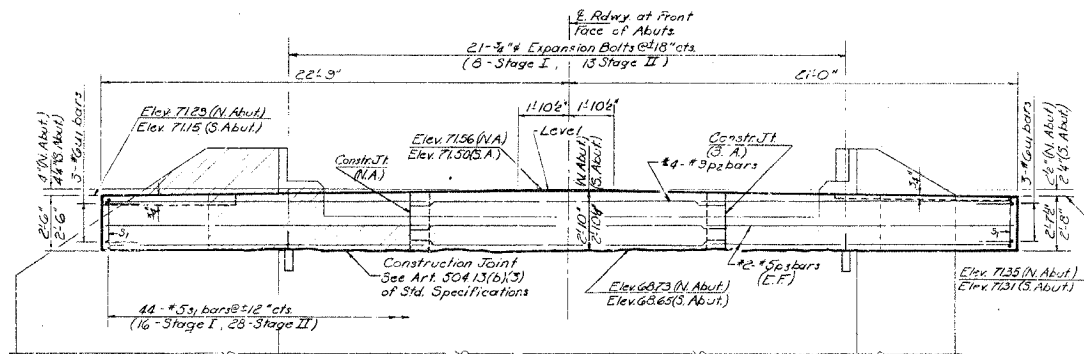


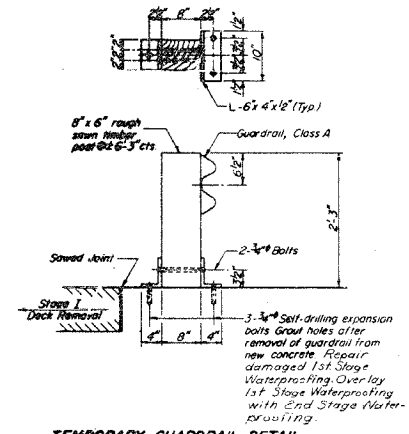
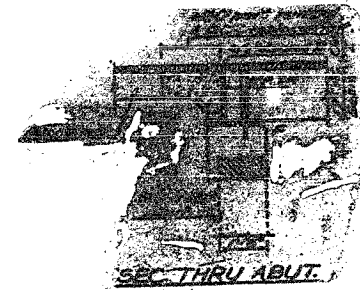
F.A.P. RTE.	SECTION	COUNTY	TOTAL SHEETS	SHEET NO.
314	111BR-I	MADISON	123	110
STA.		TO STA.		
FED. ROAD DIST. NO.	ILLINOIS	FED. AID PROJECT		

STATE OF ILLINOIS
DEPARTMENT OF TRANSPORTATION

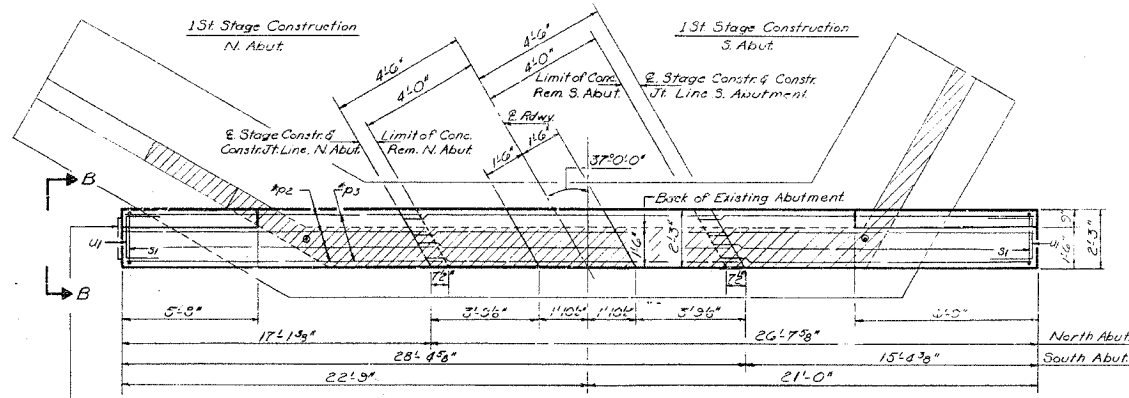
PROJECT NO.	SECTION	COUNTY	SHEET NO.	SHEET
60 111BR	MADISON	3B	33	33
FED. ROAD DIST. NO.		FED. AID PROJECT		



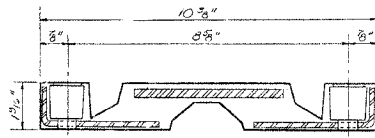
ELEVATION



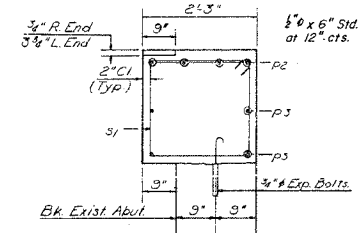
TEMPORARY GUARDRAIL DETAIL
See Special Provisions



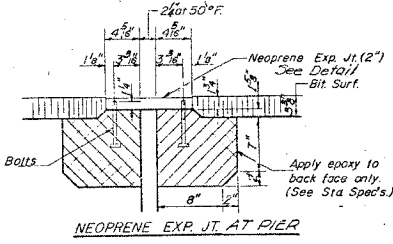
PLAN



2\"/>



VIEW B-B
(u1 bars not shown)



NEOPRENE EXP. JT. AT PIER

TWO ABUTMENTS
BILL OF MATERIAL

Bar	No.	Size	Length	Shops
P2	8	#3	44'-0"	
P3	8	#5	48'-0"	
S1	88	#5	3'-1"	□
u1	12	#6	6'-0"	□
Class X Concrete		Cu Yds. 19.2		
Reinf. Bars		Lbs. 2320		
Expansion Bolts		Each 42		
Concrete Removal		Cu Yds. 15		

ABUTMENTS
FA RTG8 SEC. III BR
MADISON COUNTY
STA. 161+40.00

DESIGNED	H. J. Lee
CHECKED	F. Coffin
DRAWN	F. Coffin
CHECKED	H. J. Lee

EXAMINED	[Signature]
PASSED	[Signature]
APPROVED	[Signature]

Notes:
Hatched area indicates Concrete Removal Reinforcement extending into removed area shall be cleaned and incorporated into the new construction.
Expansion Bolts shall be anchored in sound concrete.
All edges shall have standard 1/4\"/>

* Order p2,p3 bars full length. Cut to fit as shown and use remainder of bars in 2nd Stage Construction. Min lap = 6\"/>

Place Name Plate at this location (N.A. Only)

PLOT DATE = 10/16/2005
FILE NAME = c:\projects\111BR\111BR.dgn
PLOT SCALE = 1/8\"/>

FOR INFORMATION ONLY

REVISIONS	
NAME	DATE

ILLINOIS DEPARTMENT OF TRANSPORTATION

EXISTING STRUCTURE PLANS

FAP ROUTE 314
SECTION 111BR-I
MADISON COUNTY