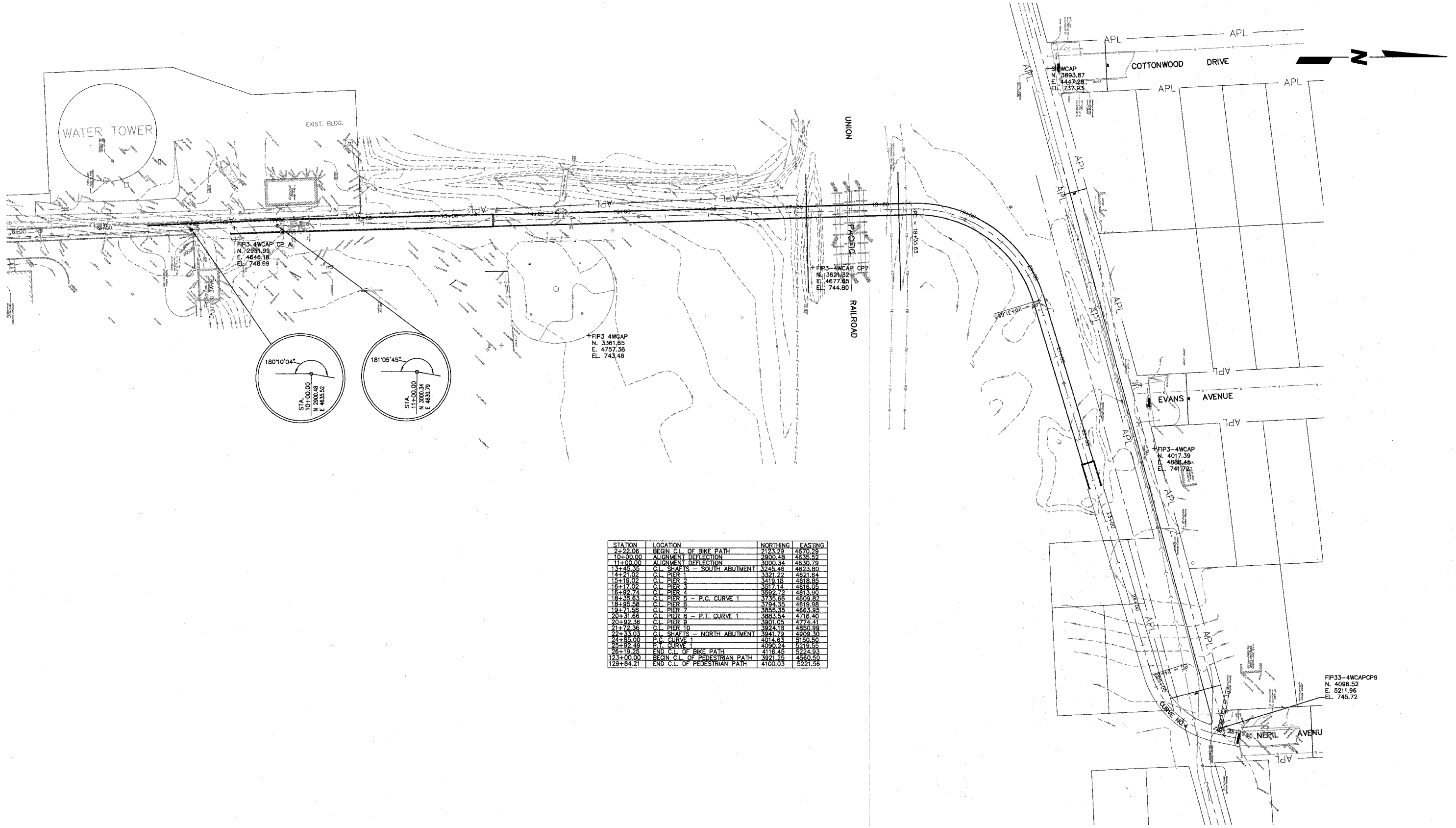
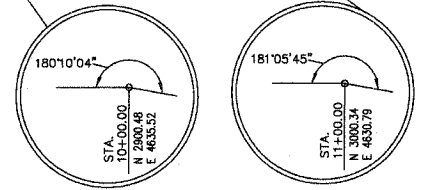


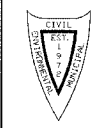
CONTRACT NO. 83560



STATION	LOCATION	NORTHING	EASTING
2+22.06	BEGIN C.L. OF BIKE PATH	2123.29	4670.29
10+00.00	ALIGNMENT DEFLECTION	2900.48	4635.82
11+00.00	ALIGNMENT DEFLECTION	3000.34	4630.79
11+45.35	C.L. SHAFTS - SOUTH ABUTMENT	3235.46	4623.80
14+21.02	C.L. PIER 1	3321.22	4621.64
15+19.02	C.L. PIER 2	3419.18	4618.85
16+17.02	C.L. PIER 3	3517.14	4616.05
16+92.74	C.L. PIER 4	3592.72	4613.90
18+35.63	C.L. PIER 5 - P.C. CURVE 1	3735.66	4609.82
18+85.38	C.L. PIER 6	3784.35	4619.98
19+71.58	C.L. PIER 7	3852.35	4630.95
20+31.66	C.L. PIER 8 - P.T. CURVE 1	3883.54	4716.40
20+82.36	C.L. PIER 9	3901.05	4774.41
21+74.36	C.L. PIER 10	3924.19	4850.98
22+33.03	C.L. SHAFTS - NORTH ABUTMENT	3941.79	4909.30
24+85.00	P.C. CURVE 1	4014.63	5150.50
25+92.49	P.T. CURVE 1	4090.24	5219.55
26+19.28	END C.L. OF BIKE PATH	4116.45	5274.93
123+00.00	BEGIN C.L. OF PEDESTRIAN PATH	3921.25	4560.50
129+84.21	END C.L. OF PEDESTRIAN PATH	4100.03	5221.56



PREPARED FOR:
WHEATON PARK DISTRICT
 666 S. MAIN STREET
 WHEATON, IL 60187



PREPARED BY:
CEMCON, Ltd.
 Consulting Engineers, Land Surveyors & Planners
 2280 White Oak Circle, Suite 100
 Aurora, Illinois 60504-9675
 Ph: 630.862.2100 Fax: 630.862.2199
 E-Mail: cadd@cemcon.com Website: www.cemcon.com

REVISIONS					
NO.	DATE	DESCRIPTION	NO.	DATE	DESCRIPTION

COORDINATES AND TIES

PEDESTRIAN/BICYCLE BRIDGE OVER UNION PACIFIC RAILROAD

FILE NAME: GENNOTES	DSGN. BY: CA/MMH	JOB NO.: 551007	FLD. BK./PG.: 21-30	SHEET NO. 2A of 54
DIR: R\551007	DRN. BY: DRA	DATE: 12-21-04	SCALE: 1" = 50'	

XREF: TOPO/OVERALL
 TAB: CONTROL POINTS
 Copyright © 2004 Cemcon, Ltd. All rights reserved.