

CONTRACT NO. 83560

BILL OF MATERIAL

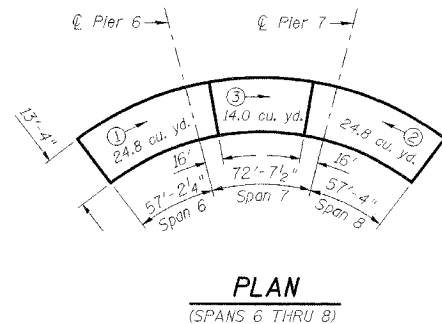
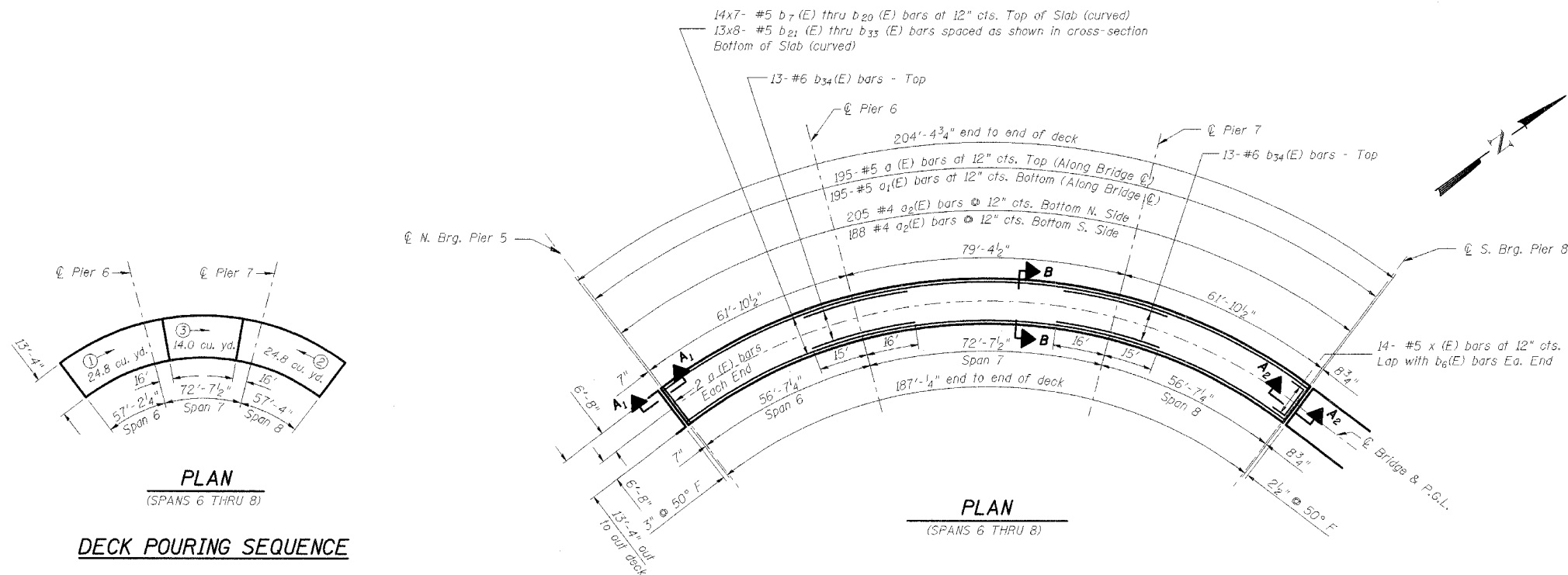
Bar	No.	Size	Length (ft)	Shape
a ₁ (E)	756	#5	13'-0"	
a ₂ (E)	744	#5	12'-0"	
a ₂ (E)	1491	#4	1'-9"	
b ₁ (E)	168	#5	31'-0"	
b ₂ (E)	169	#5	28'-8"	
b ₃ (E)	26	#6	40'-0"	
b ₄ (E)	13	#6	44'-0"	
b ₅ (E)	98	#5	30'-7"	
b ₆ (E)	104	#5	27'-0"	
b ₆ (E)	26	#6	34'-0"	
b ₇ (E)	98	#5	31'-0"	
b ₈ (E)	98	#5	30'-9"	
b ₉ (E)	98	#5	30'-7"	
b ₁₀ (E)	98	#5	30'-5"	
b ₁₁ (E)	98	#5	30'-3"	
b ₁₂ (E)	98	#5	30'-0"	
b ₁₃ (E)	98	#5	29'-10"	
b ₁₄ (E)	98	#5	29'-8"	
b ₁₅ (E)	98	#5	29'-6"	
b ₁₆ (E)	98	#5	29'-3"	
b ₁₇ (E)	98	#5	29'-1"	
b ₁₈ (E)	98	#5	29'-0"	
b ₁₉ (E)	98	#5	28'-9"	
b ₂₀ (E)	98	#5	28'-6"	
b ₂₁ (E)	104	#5	27'-4"	
b ₂₂ (E)	104	#5	27'-3"	
b ₂₃ (E)	104	#5	27'-1"	
b ₂₄ (E)	104	#5	26'-10"	
b ₂₅ (E)	104	#5	26'-8"	
b ₂₆ (E)	104	#5	26'-6"	
b ₂₇ (E)	104	#5	26'-4"	
b ₂₈ (E)	104	#5	26'-2"	
b ₂₉ (E)	104	#5	26'-0"	
b ₃₀ (E)	104	#5	25'-9"	
b ₃₁ (E)	104	#5	25'-6"	
b ₃₂ (E)	104	#5	25'-4"	
b ₃₃ (E)	104	#5	25'-3"	
b ₃₄ (E)	26	#6	31'-0"	
x(E)	84	#5	4'-1"	
Concrete Superstructure			Cu. Yd.	258.8
Reinforcement Bars, Epoxy Coated			Pound	122,850

Notes

1. Reinforcement bars designated (E) shall be epoxy coated.
2. Bars indicated thus 14x7 - #5 etc. indicates 14 lines of bars with 7 lengths per line.
3. For sections A-A, A₁-A₁ & A₂-A₂ see sheet S10

INDEX OF BRIDGE SHEETS
SHEET S9 OF S29

Copyright © 2003 Cemcon, Ltd. All rights reserved.

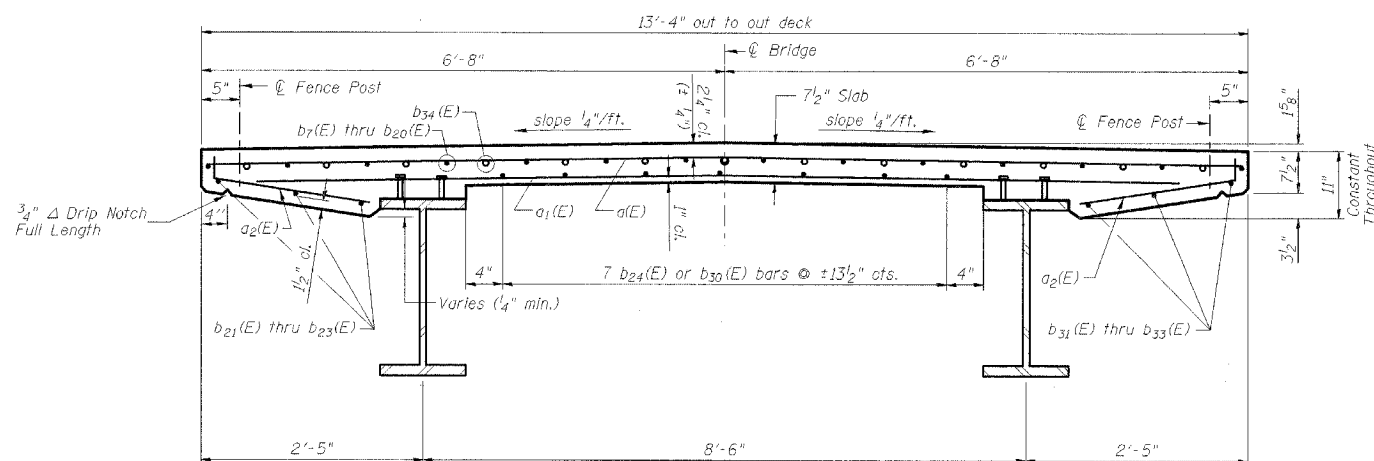


DECK POURING SEQUENCE

The rate of placing concrete shall equal or exceed 1/2 span length per hour, but not exceed 50 cu. yd. per hour.

The contractor may submit an alternate pouring sequence subject to approval of the Engineer.

① → Indicates sequence number and pouring direction



CROSS SECTION B-B

BARS b₆(E) THRU b₃₂(E)

CURVED BAR DIMENSIONS

Bar	R (ft)	L (ft)
b ₇ (E)	156.50	31'-0"
b ₈ (E)	155.50	30'-9"
b ₉ (E)	154.50	30'-7"
b ₁₀ (E)	153.50	30'-5"
b ₁₁ (E)	152.50	30'-3"
b ₁₂ (E)	151.50	30'-0"
b ₁₃ (E)	150.50	29'-10"
b ₁₄ (E)	149.50	29'-8"
b ₁₅ (E)	148.50	29'-6"
b ₁₆ (E)	147.50	29'-3"
b ₁₇ (E)	146.50	29'-1"
b ₁₈ (E)	145.50	29'-0"
b ₁₉ (E)	144.50	28'-9"
b ₂₀ (E)	143.50	28'-6"
b ₂₁ (E)	156.50	27'-4"
b ₂₂ (E)	155.75	27'-3"
b ₂₃ (E)	155.00	27'-1"
b ₂₄ (E)	153.42	26'-10"
b ₂₅ (E)	152.28	26'-8"
b ₂₆ (E)	151.14	26'-6"
b ₂₇ (E)	150.00	26'-4"
b ₂₈ (E)	148.86	26'-2"
b ₂₉ (E)	147.73	26'-0"
b ₃₀ (E)	146.58	25'-9"
b ₃₁ (E)	145.00	25'-6"
b ₃₂ (E)	144.25	25'-4"
b ₃₃ (E)	143.50	25'-3"

PREPARED FOR:
WHEATON PARK DISTRICT
666 S. MAIN STREET
WHEATON, ILLINOIS 60187



PREPARED BY:
CEMCON, Ltd.
Consulting Engineers, Land Surveyors & Planners
2280 White Oak Circle, Suite 100
Aurora, Illinois 60504-9675
Ph: 630.862.2100 Fax: 630.862.2199
E-Mail: cadd@cemcon.com Website: www.cemcon.com

REVISIONS					
NO.	DATE	DESCRIPTION	NO.	DATE	DESCRIPTION

DECK PLAN - SHEET 2 OF 2				
PEDESTRIAN/BICYCLE PATH BRIDGE OVER UNION PACIFIC RAILROAD				
FILE NAME: DECK PLAN	DSGN. BY: MMH	JOB NO.: 551.007	FLD. BK./PG.: -----	SHEET NO. 22 of 54
DISC. NUMBER: 551007	DRN. BY: KMS	DATE: 04-26-04	SCALE: 1" = 20'	