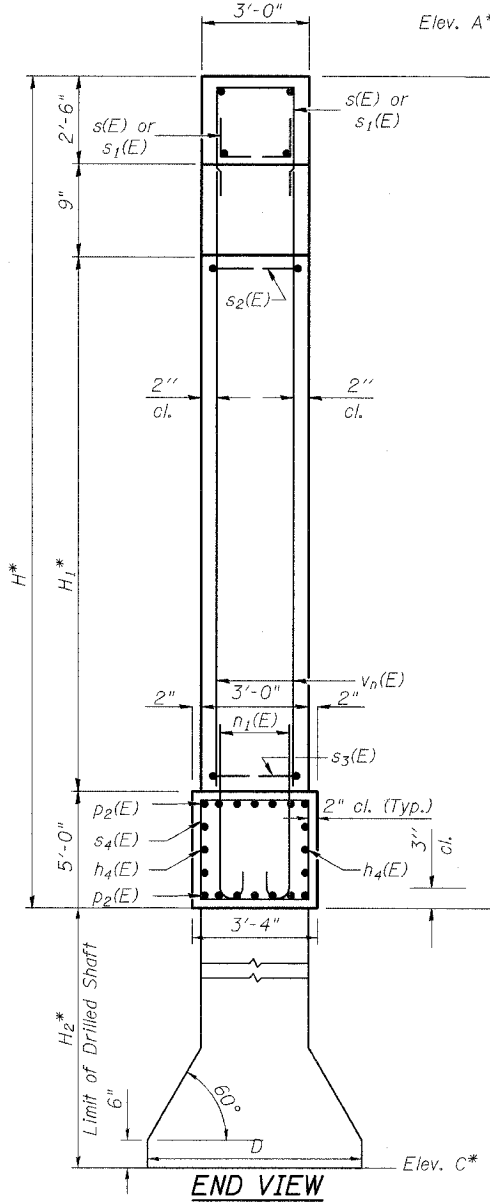
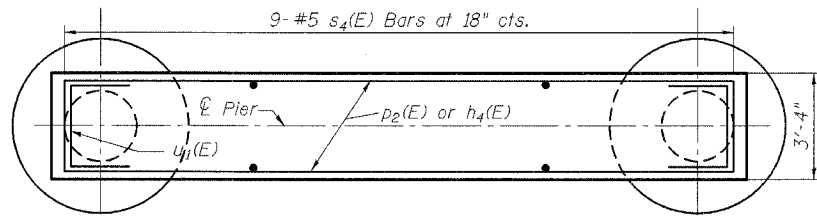
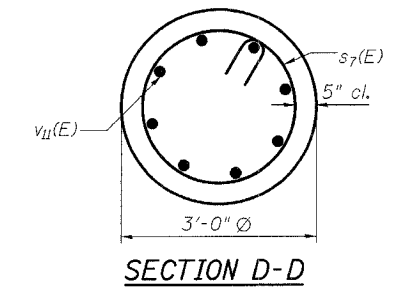
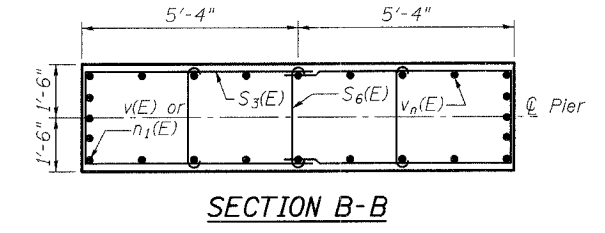
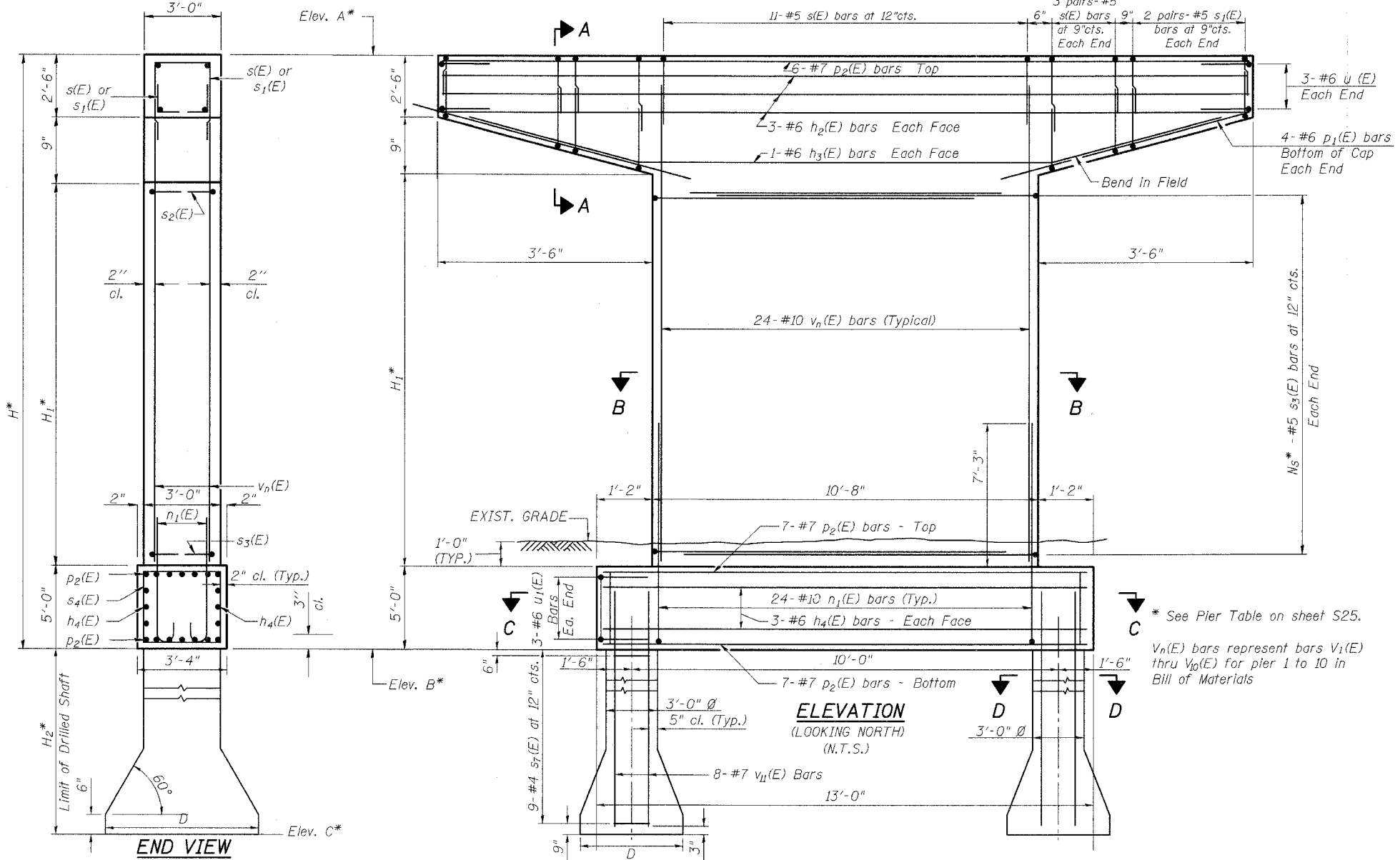
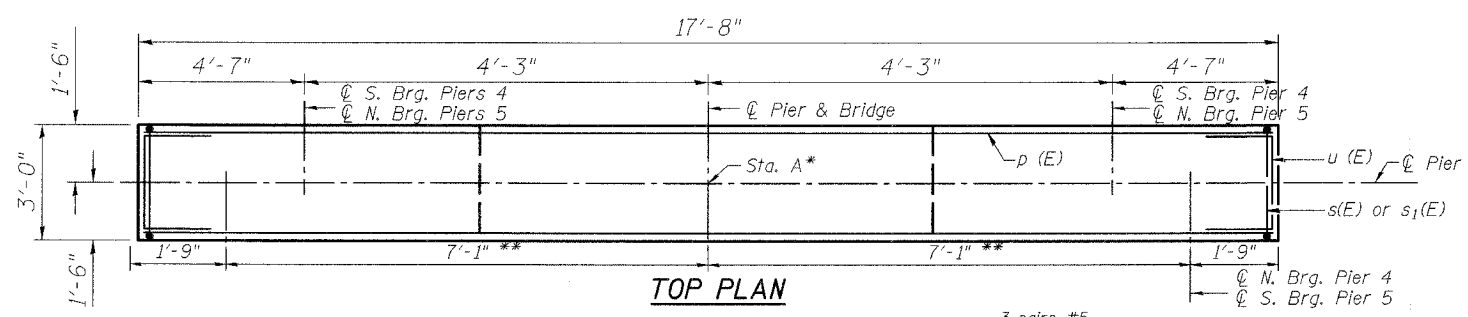


CONTRACT NO. 83560

Notes:
 Space reinforcement in cap to miss anchor bolts.
 Pour steps monolithically with cap.
 For bearing anchor bolt locations see sheet S10, S16 & S17.
 All edges shall have 3/4" Chamfer.
 ** Dimensions to be adjusted as per Prefabricated Truss Bridge manufacturer's plans. Notify Engineer for any discrepancies.



* See Pier Table on sheet S25.
 Vn(E) bars represent bars V1(E) thru V0(E) for pier 1 to 10 in Bill of Materials

REVISIONS					
NO.	DATE	DESCRIPTION	NO.	DATE	DESCRIPTION

PREPARED FOR:
 WHEATON PARK DISTRICT
 666 S. MAIN STREET
 WHEATON, ILLINOIS 60187



PREPARED BY:
CEMCON, Ltd.
 Consulting Engineers, Land Surveyors & Planners
 2280 White Oak Circle, Suite 100
 Aurora, Illinois 60504-9675
 Ph: 630.862.2100 Fax: 630.862.2199
 E-Mail: cadd@cemcon.com Website: www.cemcon.com

PIERS 4 & 5 - DETAILS - SHEET 2 OF 2			
PEDESTRIAN/BICYCLE PATH BRIDGE OVER UNION PACIFIC RAILROAD			
FILE NAME: PIER	DSGN. BY: MMH	JOB NO.: 55L007	FLD. BK./PG.: ----
DISC. NUMBER: 55I007	DRN. BY: KMS	DATE: 04-26-04	SCALE: ----
INDEX OF BRIDGE SHEETS			SHEET NO. 39 of 54