

FAU ROUTE NO.	SECTION	COUNTY	TOTAL SHEETS	SHEET NO.
1009	*	COOK	9	1
ILLINOIS PROJECT: M-8003 (451)				
CONTRACT NO.: 83801				
* 01-00015-00-RS				

STATE OF ILLINOIS
DEPARTMENT OF TRANSPORTATION
DIVISION OF HIGHWAYS

PLANS FOR PROPOSED LOCAL AGENCY PAVEMENT PRESERVATION PROJECT FAU 1009 (207TH STREET) RESURFACING

SECTION: 01-00015-00-RS
GOVERNORS HIGHWAY TO OLYMPIAN WAY
PROJECT NO.: M-8003 (451)
VILLAGE OF OLYMPIA FIELDS
COOK COUNTY
JOB NO.: C-91-007-05

INDEX OF SHEETS

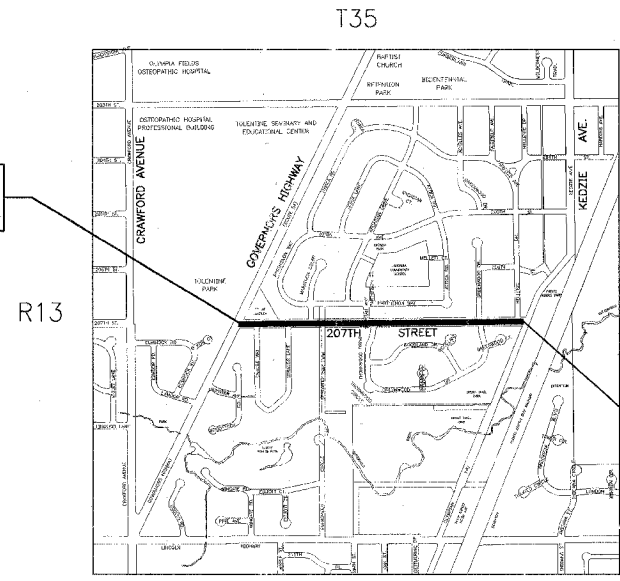
SHEET NO.	TITLE
1	COVER SHEET
2	SUMMARY & SCHEDULE OF QUANTITIES, TYPICAL SECTIONS, LEGEND, DETAILS & GENERAL NOTES
3	207TH STREET PLAN SHEET: STA. 10+24.51 TO STA. 31+50
4	207TH STREET PLAN SHEET: STA. 31+50 TO STA. 44+56.75
5	IDOT DISTRICT ONE TYPICAL PAVEMENT MARKINGS
6	IDOT PAVEMENT MARKING LETTERS & SYMBOLS FOR TRAFFIC STAGING
7	IDOT BUTT JOINT & BITUMINOUS TAPER DETAILS
8	IDOT TRAFFIC CONTROL & PROTECTION FOR SIDE ROADS, INTERSECTIONS AND DRIVEWAYS
9	IDOT TRAFFIC CONTROL & PROTECTION AT TURN BAYS (TO REMAIN OPEN TO TRAFFIC)

STANDARD NO.

000001-04	STANDARD SYMBOLS, ABBREVIATIONS AND PATTERNS
442201-01	CLASS C AND D PATCHES
701501-03	URBAN LANE CLOSURE, 2L, 2W UNDIVIDED
702001-05	TRAFFIC CONTROL DEVICES
780001-01	TYPICAL PAVEMENT MARKINGS



NOT TO SCALE



PROJECT LOCATION 207TH STREET BEGIN RESURFACING: STA. 10+24.51

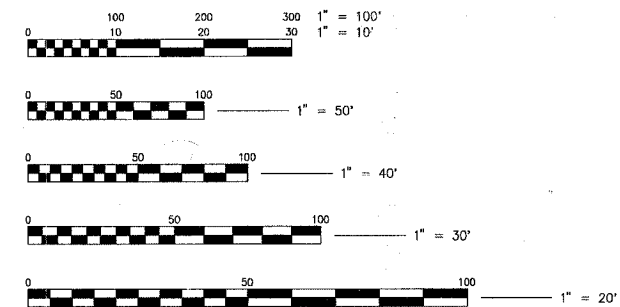
PROJECT LOCATION 207TH STREET END RESURFACING: STA. 44+56.75

DESIGN DESIGNATION
207TH STREET (SCOTT DRIVE)
LOCAL ROADS

TRAFFIC DATA
207TH STREET (SCOTT DRIVE)
POSTED OR DESIGN SPEED = 30 MPH
2023 ADT = 450

LOCATION MAP

GROSS LENGTH OF PROJECT = 3,432.24 LIN. FT. OR 0.650 MILES
NET LENGTH OF PROJECT = 3,432.24 LIN. FT. OR 0.650 MILES



FULL SIZE PLANS HAVE BEEN PREPARED USING STANDARD ENGINEERING SCALES. REDUCED SIZED PLANS WILL NOT CONFORM TO STANDARD SCALES. IN MAKING MEASUREMENTS ON REDUCED SIZE PLANS, THE ABOVE SCALES SHALL BE USED.

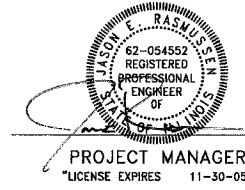
CALL JULIE 1-800-892-0123
WITH THE FOLLOWING:
COUNTY = COOK
CITY-TOWNSHIP = OLYMPIA FIELDS - RICH TOWNSHIP
SEC. & 1/4 SEC. NO. = SE & SW 1/4 - SEC. 14, NE & NW 1/4 - SEC. 23
48 HOURS BEFORE YOU DIG
EXCLUDING SAT., SUN. & HOLIDAYS



Baxter & Woodman

Burlington, Wisconsin 262.763.7834 Crystal Lake, Illinois 815.459.1260 DeKalb, Illinois 815.787.3111 Mokena, Illinois 708.478.2090
(OFFICE WHICH PREPARED PLANS)

BENCHMARK
B.M. RIM OF 2nd WATER VALVE VAULT, EAST OF DANUBE WAY,
SOUTH SIDE OF 207th STREET.
ELEVATION = 710.47



PROJECT MANAGER
"LICENSE EXPIRES 11-30-05"

STATE OF ILLINOIS
DEPARTMENT OF TRANSPORTATION
DIVISION OF HIGHWAYS

APPROVED May 19 2005 *[Signature]*
LOCAL AGENCY REPRESENTATIVE

APPROVED May 19 2005 *[Signature]*
LOCAL ROADS ENGINEER

APPROVED May 27 2005 *[Signature]*
DISTRICT ENGINEER

PRINTED BY THE AUTHORITY OF
THE STATE OF ILLINOIS

CONTRACT NO. 83801

COUNTY COOK, SECTION: NUMBER 01-00015-00-RS

I.D.O.T. FEDERAL AID DESIGN ENGINEER: JESSICA MILLER 847-705-4487 SCHAUMBURG, IL.

COPYRIGHT © 2004, BY BAXTER & WOODMAN, INC.
ALL RIGHTS RESERVED. NO PART OF THESE DRAWINGS
MAY BE REPRODUCED, OR OTHERWISE COPIED, REVISED WITHOUT
WRITTEN PERMISSION OF BAXTER & WOODMAN, INC.