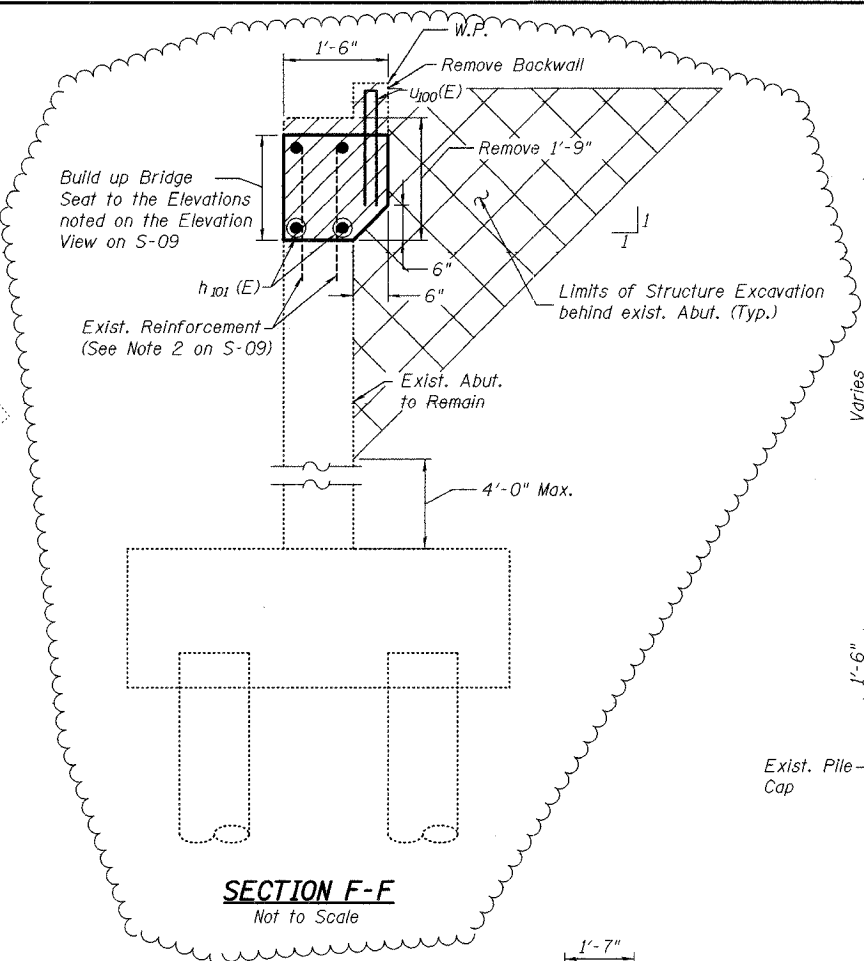
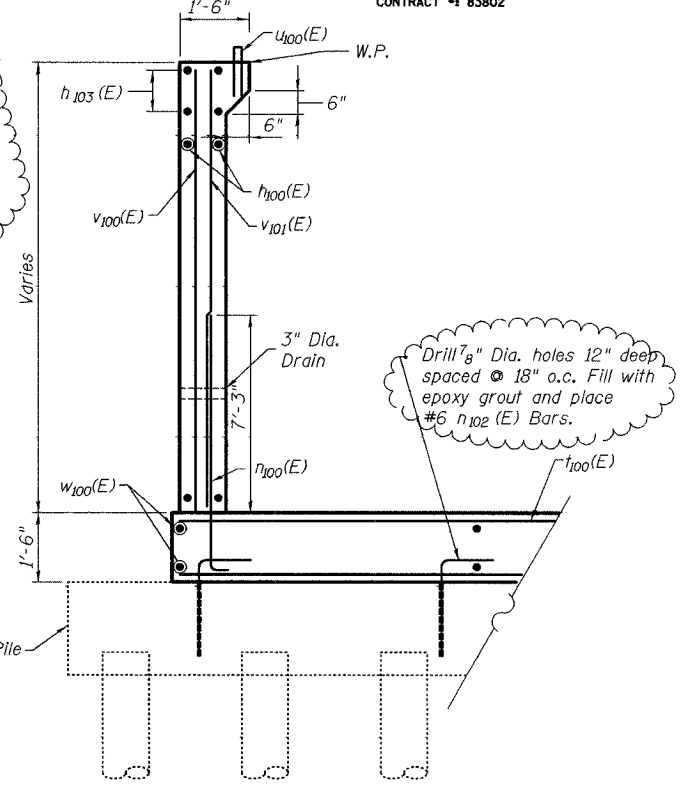


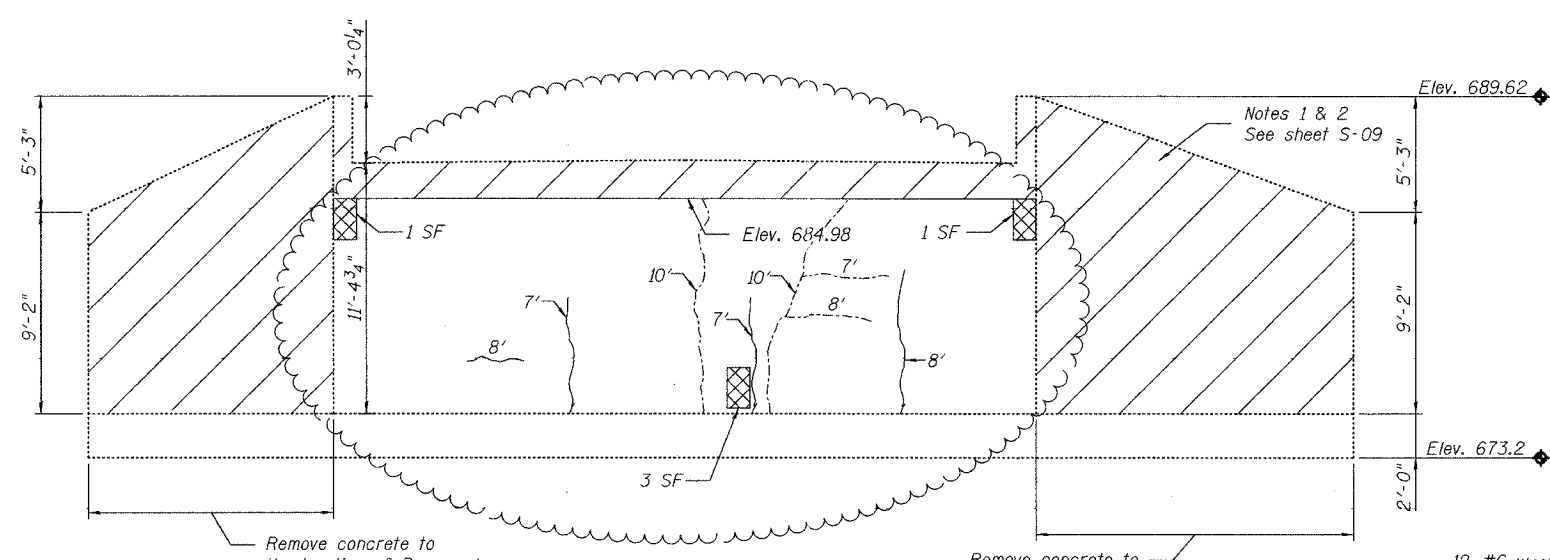
PLAN OF EXISTING ABUTMENT
Not to Scale



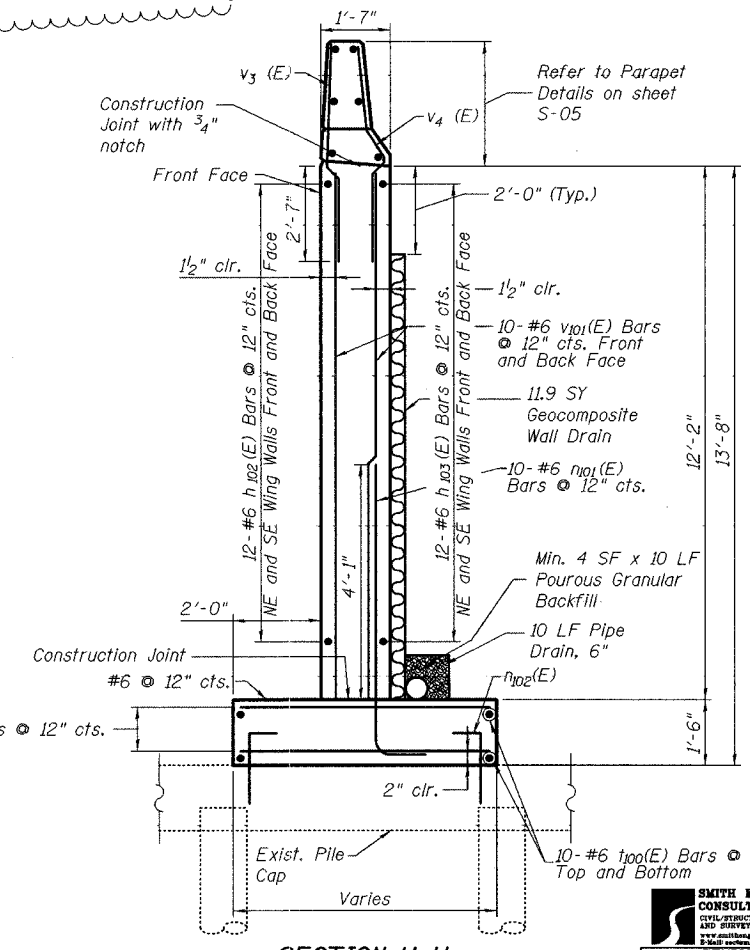
SECTION F-F
Not to Scale



SECTION G-G
Not to Scale



ELEVATION OF EXISTING ABUTMENT
Not to Scale



SECTION H-H
Not to Scale

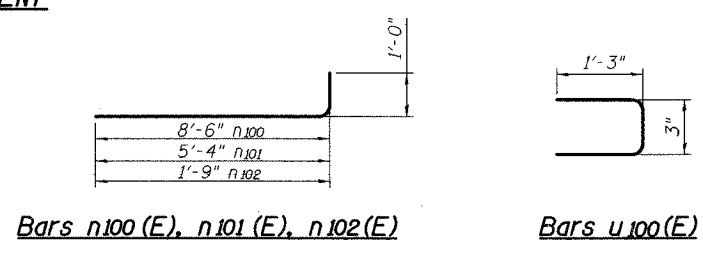
BILL OF MATERIAL

Bar	No.	Size	Length (FT)	Shape
h100(E)	72	# 5	7'-1"	
h101(E)	8	# 7	23'-6"	
h102(E)	96	# 6	12'-3"	
h103(E)	96	# 6	9'-8"	
h104(E)	40	# 8	6'-4"	
h105(E)	28	# 6	2'-9"	
h106(E)	80	# 6	11'-3"	
h107(E)	88	# 4	2'-9"	
h108(E)	48	# 5	9'-9"	
h109(E)	80	# 5	12'-4"	
h110(E)	40	# 6	9'-6"	
h111(E)	40	# 6	4'-5"	
h112(E)	40	# 6	5'-3"	
h113(E)	96	# 6	9'-1"	
Reinforcement Bars, Epoxy Coated		Pound	10,360	
Concrete Structures		Cu. Yds.	88.9	
Concrete Removal		Cu. Yds.	36.8	
Bridge Seat Sealer		Sq. Ft.	64.7	
Structure Excavation		Cu. Yd.	147.3	
Epoxy Crack Sealing		Foot	65	
Formed Concrete Repair (< 5 in)		Sq. Ft.	5	
Porous Granular Backfill		Cu. Yd.	76.3	
Geocomposite Wall Drain		Sq. Yd.	47.5	
Pipe Drain		Foot	40	

Reinforcement Bars designated (E) shall be Epoxy Coated

DESIGNED	MGH
CHECKED	RGD
DRAWN	WJH
CHECKED	NRF

- LEGEND:**
- Indicates Concrete Removal Area
 - Indicates Epoxy Crack Sealing (N. Abut.)
 - Indicates Epoxy Crack Sealing (S. Abut.)
 - Indicates Formed Concrete Repair (<5") (N. Abut.)



SMITH ENGINEERING CONSULTANTS, INC.
CIVIL/STRUCTURAL ENGINEERS
AND SURVEYORS
www.smithengineering.com

REVISIONS	DATE
NAME: WJH	DATE: 1-11-06

ILLINOIS DEPARTMENT OF TRANSPORTATION

Abutment Details
Harlem Avenue/Drecksler Road
Over Black Walnut Creek
Will County
Section 01-00139-02-BR
SN. 099-3091

DATE 5-26-2005