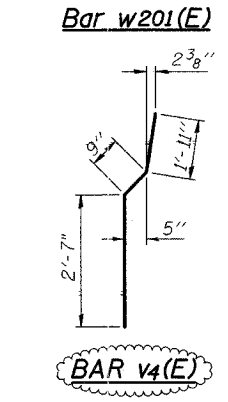
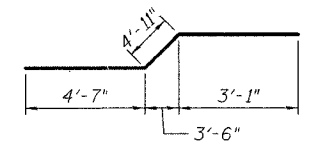
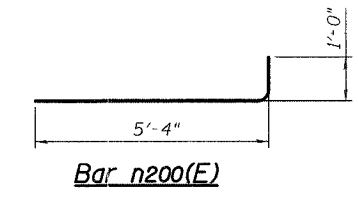
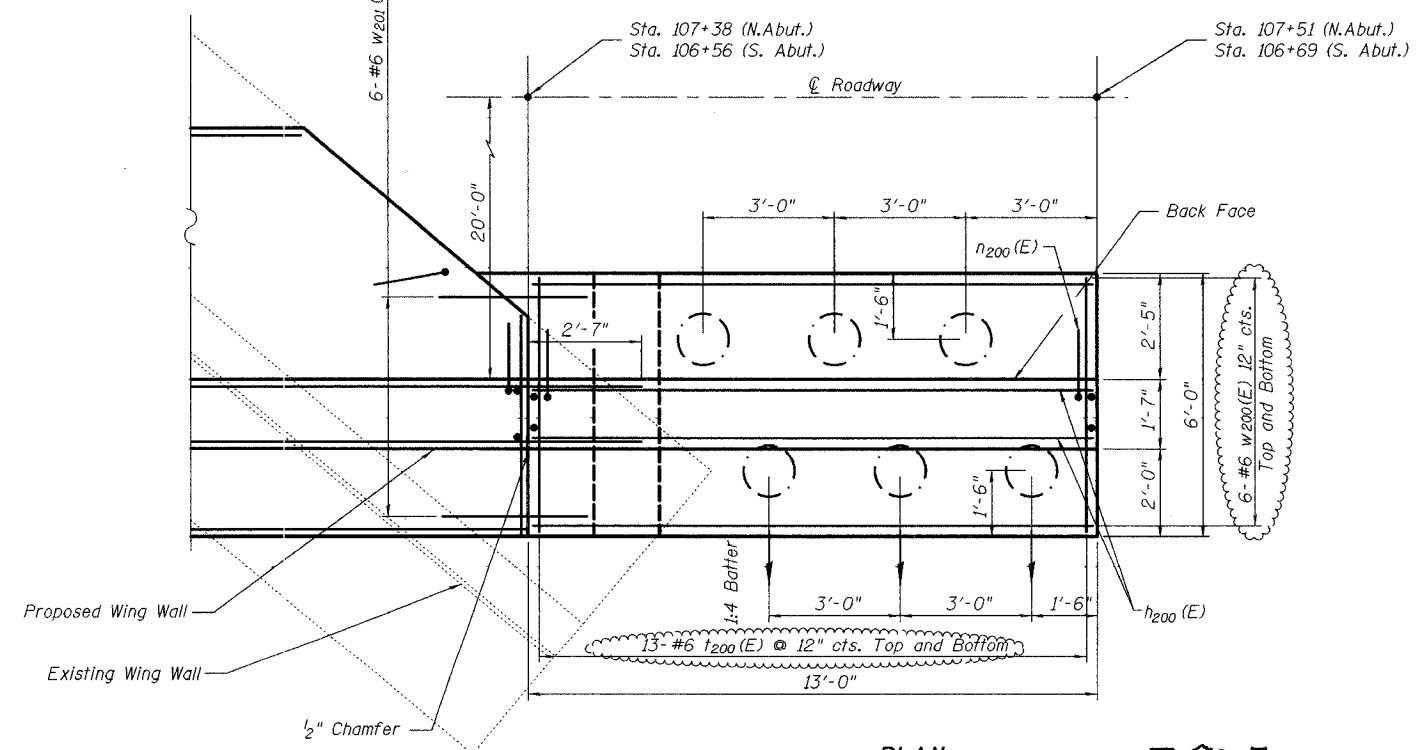


PILE DATA

Type: 12" ϕ Metal Shells
Capacity: 15 Ton
Length: 39 Ft
No.: 12*
* includes one (1) Test Pile at Northeast Retaining Wall



BILL OF MATERIAL

Bar	No.	Size	Length (FT)	Shape
h ₂₀₀ (E)	36	# 6	12'-8"	
n ₂₀₀ (E)	26	# 6	6'-4"	
t ₂₀₀ (E)	52	# 6	5'-8"	
v ₂₀₀ (E)	52	# 6	8'-6"	
v ₃ (E)	23	# 6	4'-5"	
v ₄ (E)	23	# 6	5'-3"	
W ₂₀₀ (E)	24	# 6	12'-8"	
W ₂₀₁ (E)	12	# 6	12'-7"	
Reinforcement Bars, Epoxy Coated		Pound		3,970
Concrete Structures		Cu. Yd.		28.9
Structure Excavation		Cu. Yd.		83.6
Porous Granular Backfill		Cu. Yd.		46.7
Geocomposite Wall Drain		Sq. Yd.		19.3
Pipe Drain		Foot		26

Reinforcement Bars designated (E) shall be Epoxy Coated

DESIGNED	MGH
CHECKED	ROD
DRAWN	WJH
CHECKED	NRF

SMITH ENGINEERING CONSULTANTS, INC.
CIVIL/STRUCTURAL ENGINEERS
1401 S. WASHINGTON ST.
CHICAGO, ILL. 60605
www.smithengineering.com
© 2005 smithengineering.com

REVISIONS	
NAME	DATE
WJH	1-11-06

ILLINOIS DEPARTMENT OF TRANSPORTATION

Retaining Wall Plan and Elevation
Harlem Avenue/Drecksler Road
Over Black Walnut Creek
Will County
Section 01-00139-02-BR
SN. 099-3091

DATE 5-26-2005