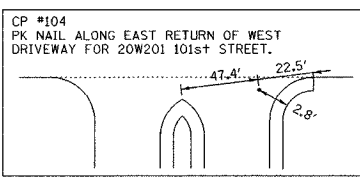
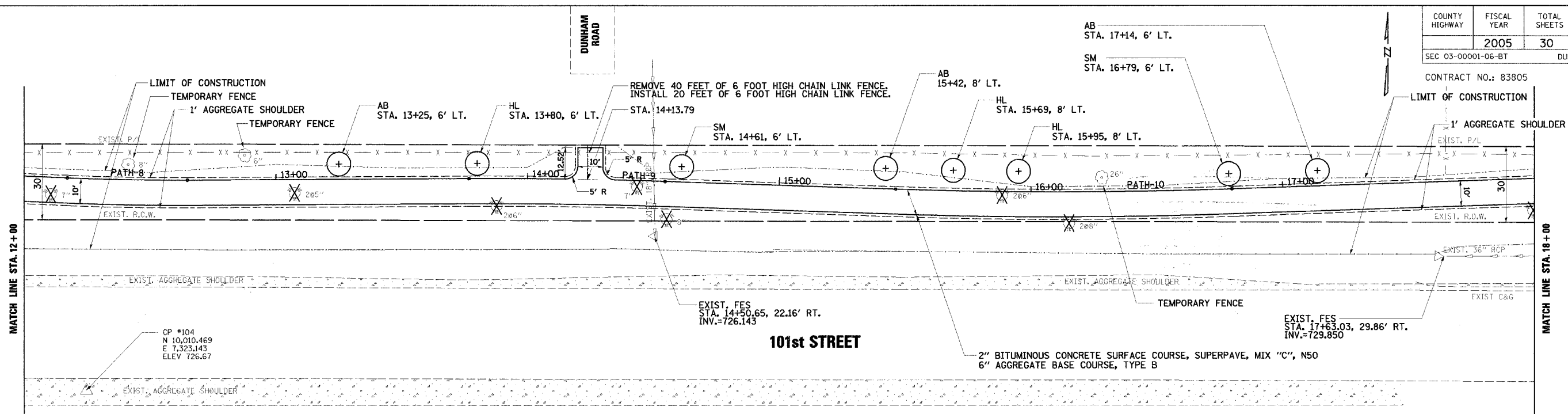


| | | | |
|-------------------|-------------|---------------|-----------|
| COUNTY HIGHWAY | FISCAL YEAR | TOTAL SHEETS | SHEET NO. |
| | 2005 | 30 | 7 |
| SEC 03-0001-06-BT | | DUPAGE COUNTY | |

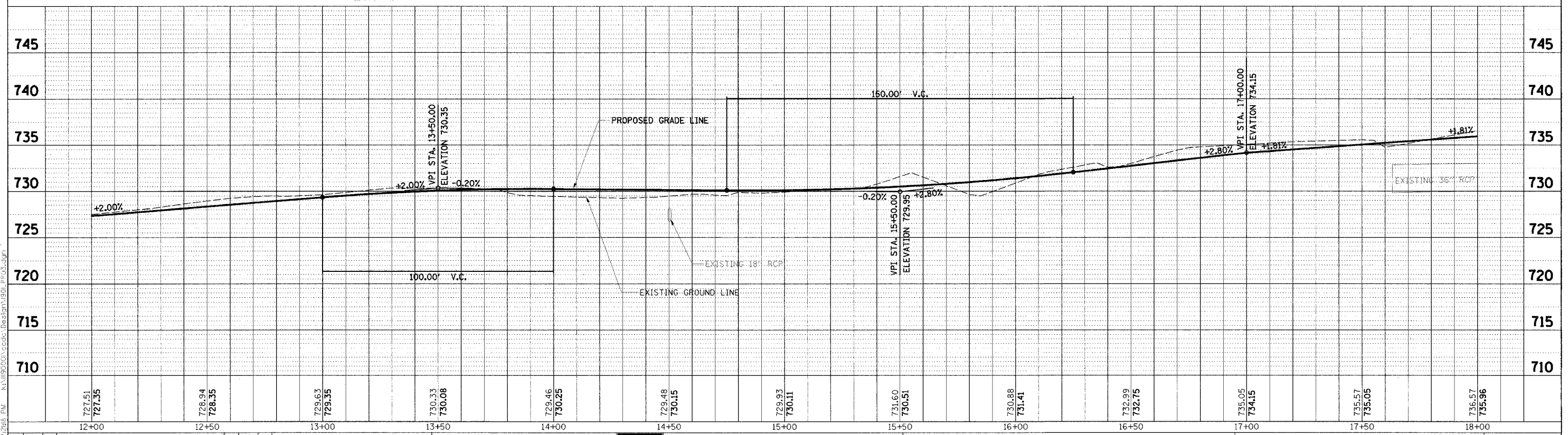
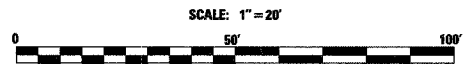
CONTRACT NO.: 83805



| CURVE R-PATH-8 | CURVE R-PATH-9 | CURVE R-PATH-10 |
|----------------------|----------------------|----------------------|
| PI Sta. 12+42.03 | PI Sta. 14+16.74 | PI Sta. 16+13.59 |
| PI N 10,093.89 | PI N 10,094.85 | PI N 10,088.27 |
| PI E 7,340.43 | PI E 7,519.15 | PI E 7,711.89 |
| Δ 2° 45' 32.86" (LT) | Δ 2° 13' 52.62" (RT) | Δ 2° 52' 39.94" (LT) |
| D 5° 47' 14.83" | D 2° 51' 53.24" | D 2° 52' 45.07" |
| L 47.67' | L 77.89' | L 134.68' |
| T 23.84' | T 38.95' | T 67.37' |
| R 990.00' | R 2,000.00' | R 1,990.00' |
| PC Sta. 12+18.19 | PC Sta. 13+77.80 | PC Sta. 15+46.22 |
| PC N 10,094.91 | PC N 10,094.64 | PC N 10,090.52 |
| PC E 7,316.61 | PC E 7,476.20 | PC E 7,644.56 |
| PT Sta. 12+68.87 | PT Sta. 14+55.68 | PT Sta. 16+80.90 |
| PT N 10,094.02 | PT N 10,093.55 | PT N 10,090.58 |
| PT E 7,364.27 | PT E 7,554.07 | PT E 7,779.22 |

| TREE PLANTING | | |
|---------------|-------------------|-----------------|
| SYMBOL | COMMON NAME | QTY. THIS SHEET |
| SM | SUGAR MAPLE | 2 EACH |
| HL | HONEYLOCUST | 3 EACH |
| AB | AMERICAN BASSWOOD | 3 EACH |

LEGEND
 ✕ - REMOVE TREE
 - x - - - EXISTING CHAIN LINK FENCE



| | | | | | | | | | | | | | | |
|--|------|----|----------|-----|------|----|----------|-------|---------|--------|---|--------------------------------------|------|------------------------|
| NO. | DATE | BY | REVISION | NO. | DATE | BY | REVISION | SCALE | H = 20' | V = 5' | PROJECT | TITLE | DATE | JUNE 9, 2005 |
| | | | | | | | | | | | Southern DuPage County Regional Trail 101st Street Connector - Waterfall Glen Spur | PLAN & PROFILE STA. 12+00 - 18+00 | | PROJECT No. II-1900-01 |
| DRAWN BY: JMC CHECKED BY: MRH APPROVED BY: DWB | | | | | | | | | | | SHEET: | | | |

RN GROUP, INC.
 CONSULTING ENGINEERS

S:\10\2005\12-24-05\12-24-05.dwg