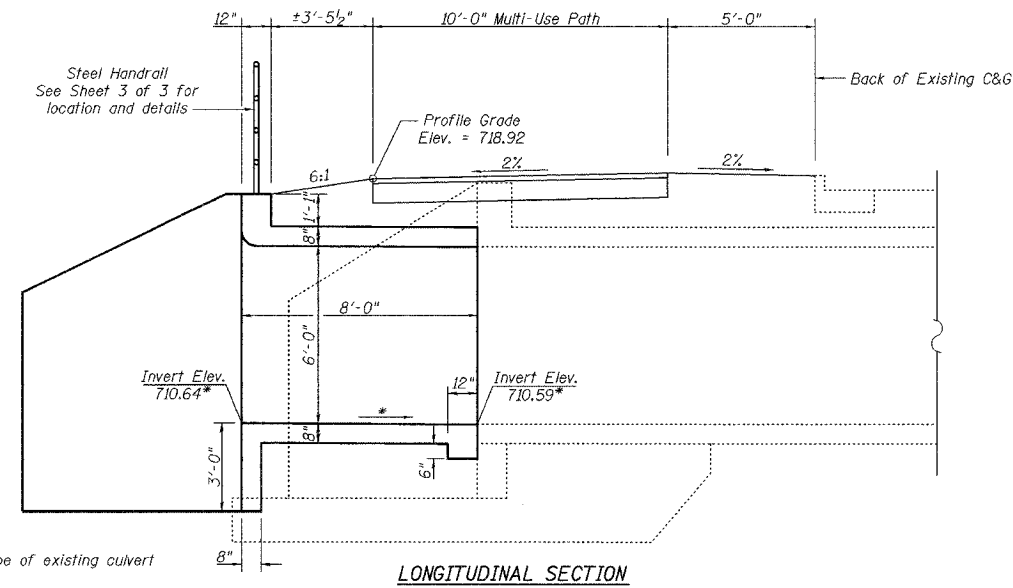


Benchmark: Chiseled "x" on east end of existing headwall. Elev. 718.76  
 Existing Structure: Double 6'x6' Precast Concrete Box Culvert, extended in 1998.  
 No Salvage.

COUNTY HIGHWAY	FISCAL YEAR	TOTAL SHEETS	SHEET NO.
	2005	30	27
SEC 03-00001-06-BT		DUPAGE COUNTY	

CONTRACT NO.: 83805



**GENERAL NOTES**

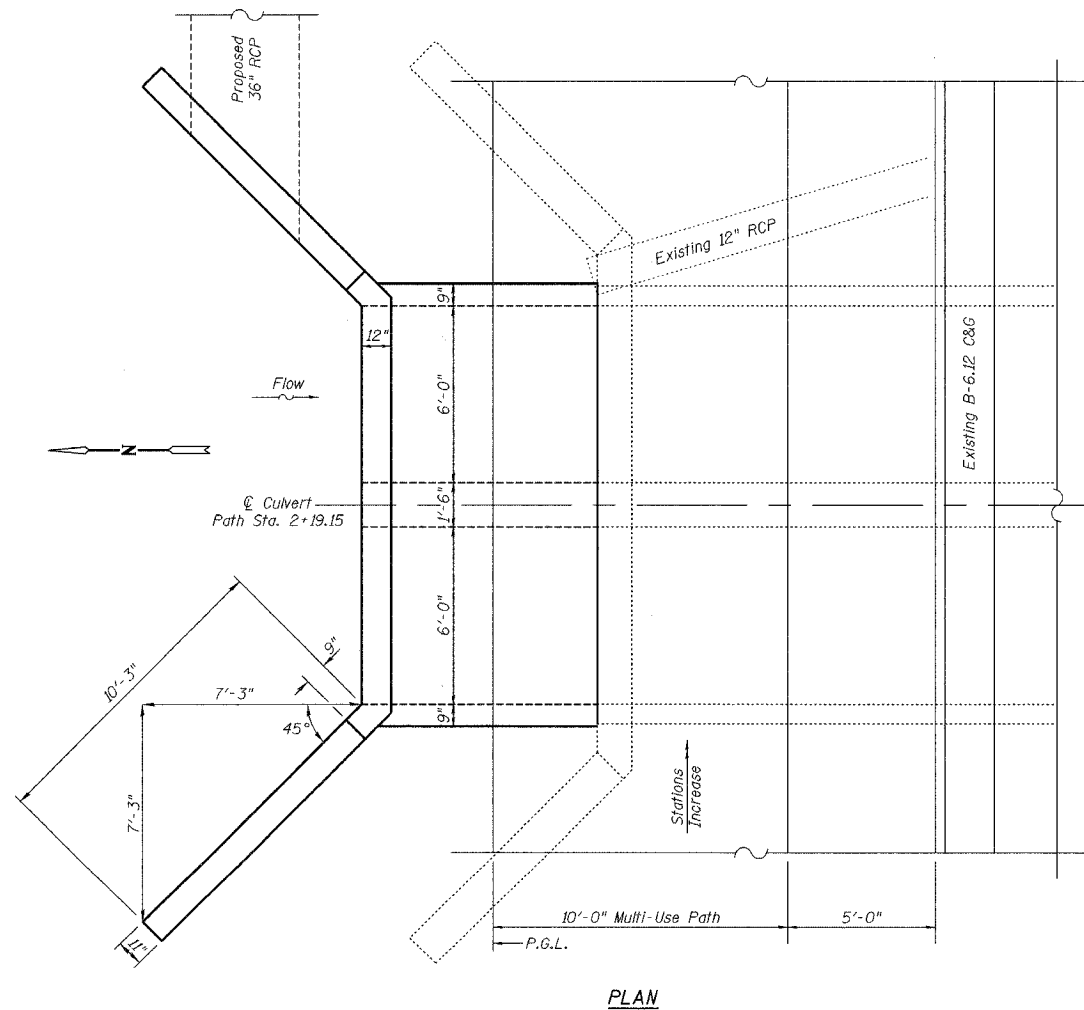
Plan dimensions and details relative to existing structure have been taken from existing plans and are subject to nominal construction variations. It shall be the Contractor's responsibility to verify such dimensions and details in the field and make necessary approved adjustments prior to construction or ordering of materials. Such variations shall not be cause for additional compensation for a change in the scope of the work, however, the Contractor will be paid for the quantity actually furnished at the unit price for the work.

Reinforcement bars shall conform to the requirements of AASHTO M 31 or M 322 Grade 60.

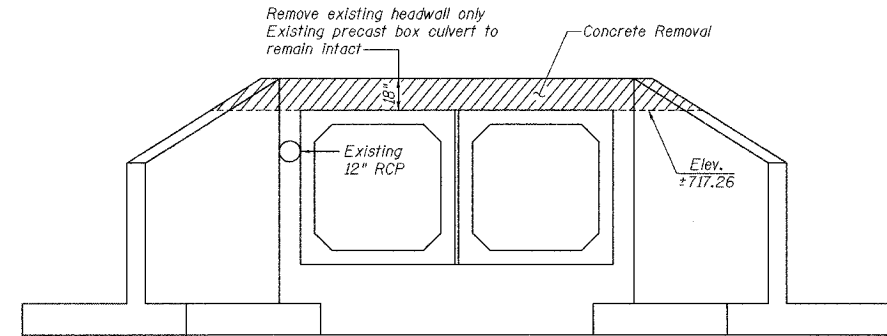
All Construction joints shall be bonded.

Coordinate construction of the east wingwall with storm sewer reconstruction plans.

\* Match invert and slope of existing culvert



PLAN

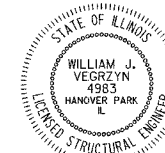


**REMOVAL NOTES:**

Cut existing reinforcement flush with removal surface.  
 Existing 12" storm sewer shall be removed.

**REMOVAL DETAILS**

Looking South



William J. Vegrzyn 7/22/05  
 Expires 11-30-06

I certify to the best of my knowledge, information and belief, this bridge, box culvert design is structurally adequate for the design loading shown on the plans. The design is an economical one for the style of structure and complies with requirements of the current "AASHTO Standard Specification for Highway Bridges".

**LOADING HS20-44**

**DESIGN SPECIFICATIONS**

AASHTO 17th Ed. - 2002

**DESIGN STRESSES**

**FIELD UNITS**

$f'_c = 3,500$  psi  
 $f_y = 60,000$  psi (reinforcement)

**TOTAL BILL OF MATERIAL**

ITEM	UNIT	TOTAL
Concrete Removal	Cu. Yd.	1.4
Concrete Box Culverts	Cu. Yd.	19.2
Reinforcement Bars	Pound	3830
Expansion Bolts 3/4 Inch	Each	40
Pipe Handrail	Foot	33

7/22/2005 8:03:32 AM ks:\1990001\culvert\plan.dgn

NO.	DATE	BY	REVISION	NO.	DATE	BY	REVISION	SCALE	N/A	PROJECT	Southern DuPage County Regional Trail 101st Street Connector - Waterfall Glen Spur	TITLE	CULVERT EXTENSION	DATE	JUNE 9, 2005
								DRAWN BY	BLB					PROJECT NO.	II-1900-01
								CHECKED BY	WJV					SHEET	1 of 3
								APPROVED BY							



**R/N GROUP, INC.**  
 CONSULTING ENGINEERS