

F.A.U. RTE.	SECTION	COUNTY	TOTAL SHEETS	SHEET NO.
3573	05-00053-00-RS	DUPAGE	18	1

CONTRACT NO. 83816

STATE OF ILLINOIS
DEPARTMENT OF TRANSPORTATION
DIVISION OF HIGHWAYS

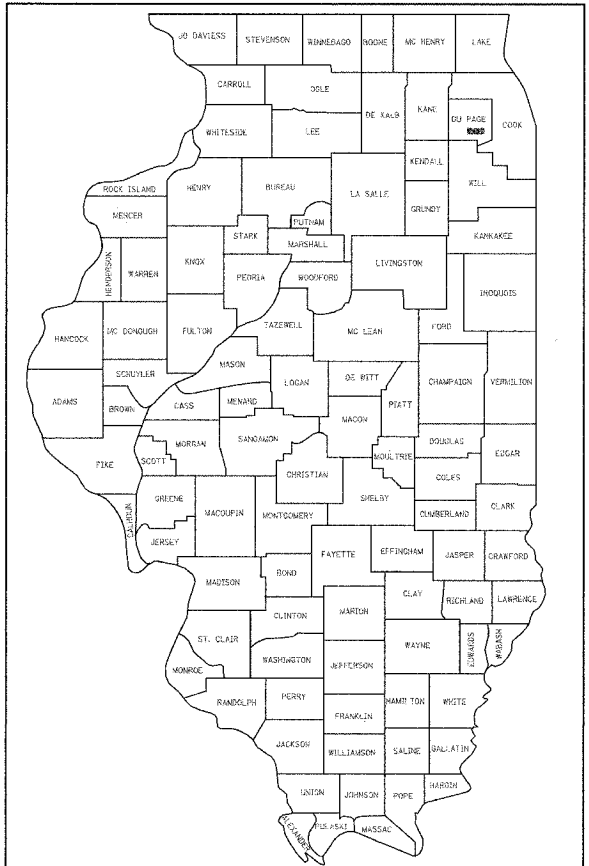
**PLANS FOR PROPOSED
FEDERAL AID PROJECT
RESURFACING**

**FAU 3573 WOODRIDGE DRIVE
IL ROUTE 53 (FAP 870) TO HOBSON RD (FAU 3567)
RESURFACING
SECTION: 05-00053-00-RS
PROJECT: CM-8003(534)
DUPAGE COUNTY
JOB NO.: C-91-040-06**

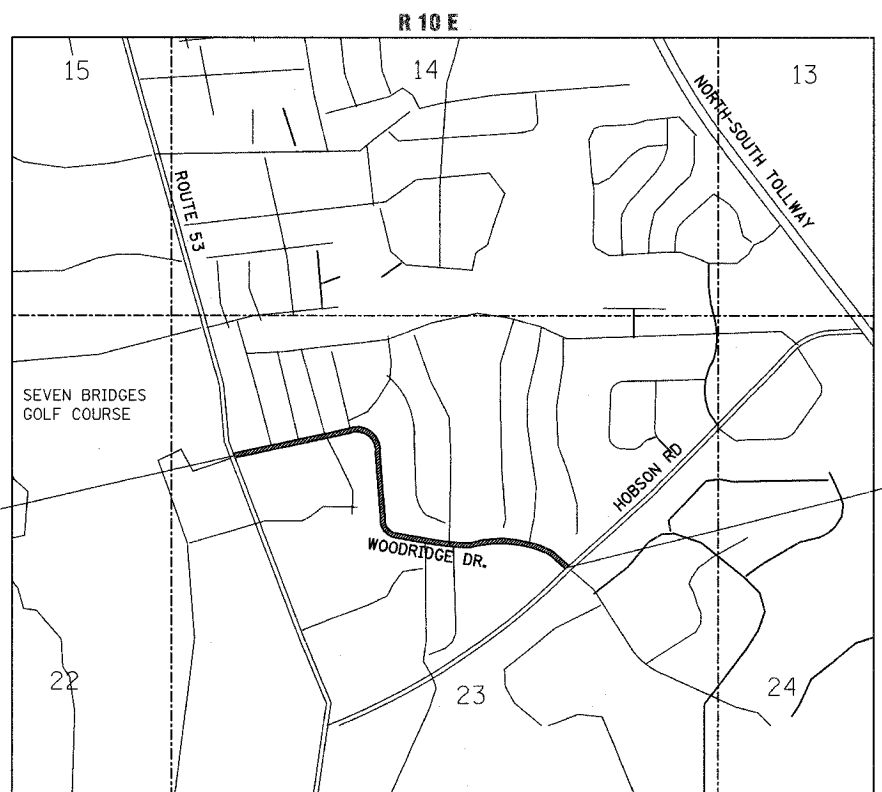
INDEX OF SHEETS	
SHEET NO.	DESCRIPTION
1	TITLE & INDEX OF SHEETS
2	GENERAL NOTES, STANDARDS & SCHEDULE OF QUANTITIES
3	TYPICAL SECTIONS
4-7	PLAN SHEETS
8-11	PAVEMENT MARKING PLANS
12	TYPICAL PAVEMENT MARKING DETAILS
13	TRAFFIC CONTROL AND PROTECTION FOR SIDE ROADS, INTERSECTIONS AND DRIVEWAYS
14	TRAFFIC CONTROL AND PROTECTION AT TURN BAYS (TO REMAIN OPEN TO TRAFFIC)
15	PAVEMENT MARKINGS LETTERS AND SYMBOLS FOR TRAFFIC STAGING
16	DETAILS FOR FRAMES AND LID ADJUSTMENT WITH MILLING
17	CURB OR CURB AND GUTTER REMOVAL AND REPLACEMENT
18	DISTRICT 1 DETECTOR LOOP INSTALLATION DETAILS FOR ROADWAY RESURFACING

HIGHWAY STANDARDS SEE SHEET 2 OF 18

TRAFFIC DATA
ADT (2003) = 5650
POSTED SPEED = 25 mph

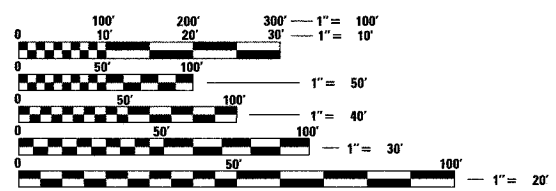


LOCATION OF SECTION INDICATED THUS: - [Black Box] -



LOCATION MAP
(NOT TO SCALE)

GROSS LENGTH AND NET LENGTH = 4288 FEET (0.81 MILES)



FULL SIZE PLANS HAVE BEEN PREPARED USING STANDARD ENGINEERING SCALES. REDUCED SIZED PLANS WILL NOT CONFORM TO STANDARD SCALES. IN MAKING MEASUREMENTS ON REDUCED PLANS, THE ABOVE SCALES MAY BE USED.

J.U.L.I.E.
JOINT UTILITY LOCATION INFORMATION FOR EXCAVATION
1-800-892-0123

CONTRACT NO. 83816

IDOT FEDERAL AID DESIGN ENGINEER: ABIGAIL BRINKS, 847-705-4233



9/6/2005
David Landwehr
EXP. 11/30/05

VILLAGE OF WOODRIDGE
APPROVED September 6, 2005
[Signature]
VILLAGE ENGINEER

STATE OF ILLINOIS
DEPARTMENT OF TRANSPORTATION
DIVISION OF HIGHWAYS
APPROVED Sept. 7, 2005
[Signature]
LOCAL ROADS AND STREETS ENGINEER

APPROVED September 7, 2005
[Signature]
DEPUTY DIRECTOR OF HIGHWAYS, REGION ENGINEER

**PRINTED BY THE AUTHORITY
OF THE STATE OF ILLINOIS**

PLANS PREPARED BY:

URS 122 S. MICHIGAN AVE., SUITE 1920 TEL (312) 939-1000
CHICAGO, IL 60603 FAX (312) 939-4198