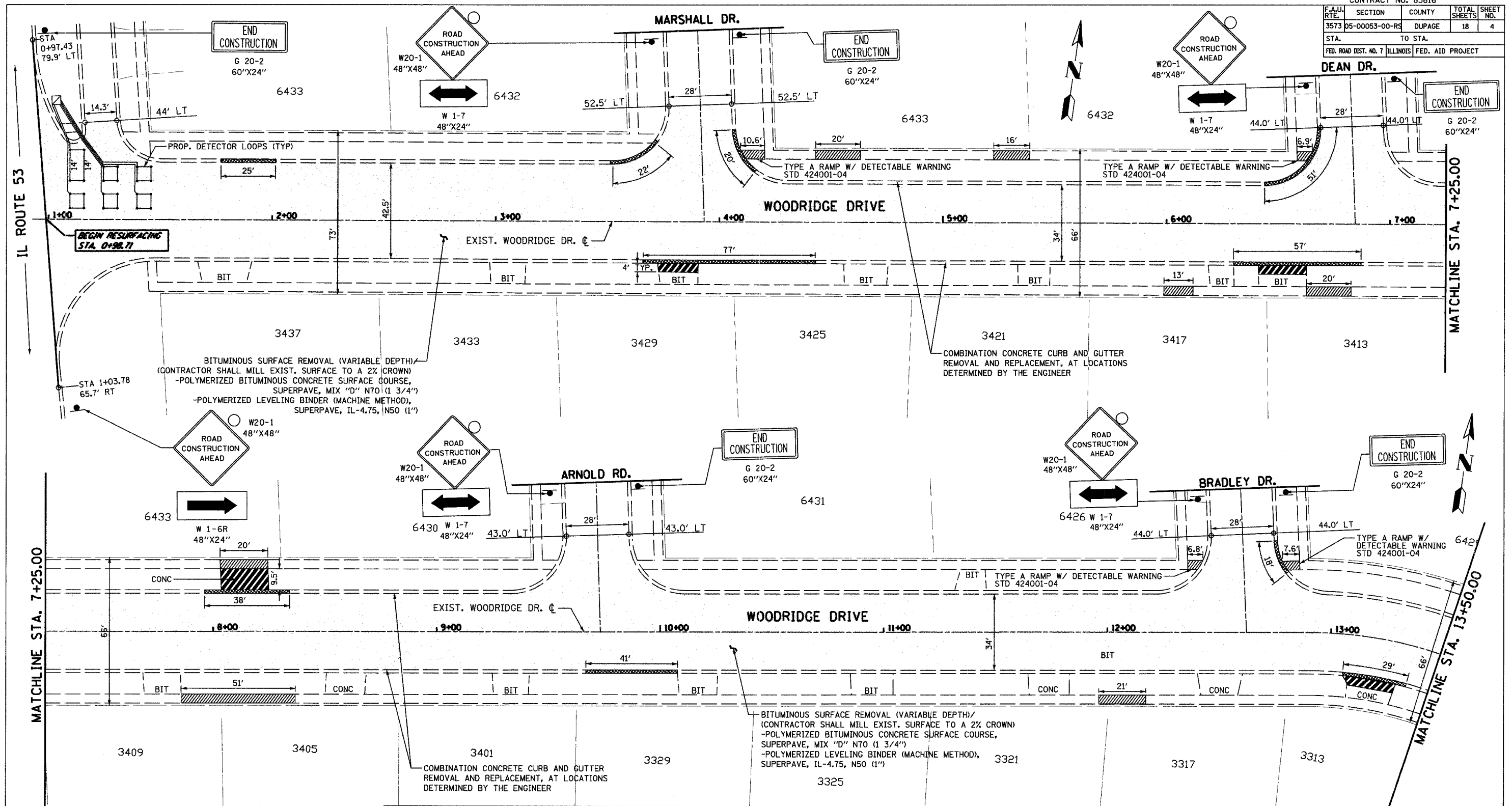
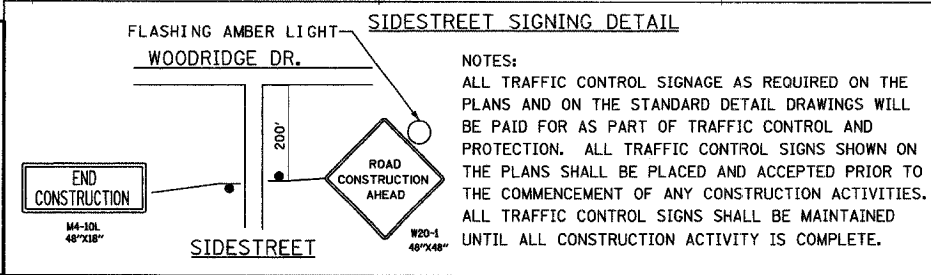


F.A.U. RTE.	SECTION	COUNTY	TOTAL SHEETS	SHEET NO.
3573	05-00053-00-RS	DUPAGE	18	4
STA.	TO STA.		FED. ROAD DIST. NO. 7 ILLINOIS FED. AID PROJECT	

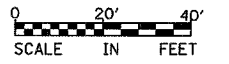


NOTES:

1. THE ACTUAL LOCATION AND QUANTITY OF CURB AND GUTTER REMOVAL AND REPLACEMENT, SIDEWALK REMOVAL AND REPLACEMENT, DRIVEWAY REMOVAL AND REPLACEMENT, AND PAVEMENT PATCHING WILL BE DETERMINED IN THE FIELD, DURING CONSTRUCTION, BY THE RESIDENT ENGINEER. HOWEVER FINAL QUANTITIES SHALL NOT EXCEED QUANTITIES ALLOTTED IN THE CONTRACT SUMMARY OF QUANTITIES.
2. RESTORATION OF THE WORK AREA SHALL BE INCIDENTAL TO THE CONTRACT WITHOUT ANY EXTRA COMPENSATION ALLOWED TO THE CONTRACTOR.
3. FRAMES AND GRATES TO BE ADJUSTED SHALL BE ADJUSTED AS NEEDED IN THE FIELD AS DETERMINED BY THE RESIDENT ENGINEER.



- LEGEND**
1. SIDEWALK REMOVAL / -PORTLAND CEMENT CONCRETE SIDEWALK 5"
 2. DRIVEWAY REMOVAL 4' FROM BACK OF CURB (TYP.), UNLESS OTHERWISE SHOWN.
 3. COMBINATION CONCRETE CURB & GUTTER REMOVAL AND REPLACEMENT
 4. BITUMINOUS SURFACE REMOVAL



REVISIONS	
NAME	DATE

ILLINOIS DEPARTMENT OF TRANSPORTATION
VILLAGE OF WOODRIDGE

REHABILITATION & RESURFACING PLAN
 STA. 0+98.71 TO STA. 13+50.00

SCALE: VERT. 1" = 20'
 HORIZ. DATE: SEPTEMBER 7, 2005

DRAWN BY: LM
 CHECKED BY: KLM

DATE = 09/07/05
 FILE NAME = 050053-00-RS
 USER NAME = KLS/RSB