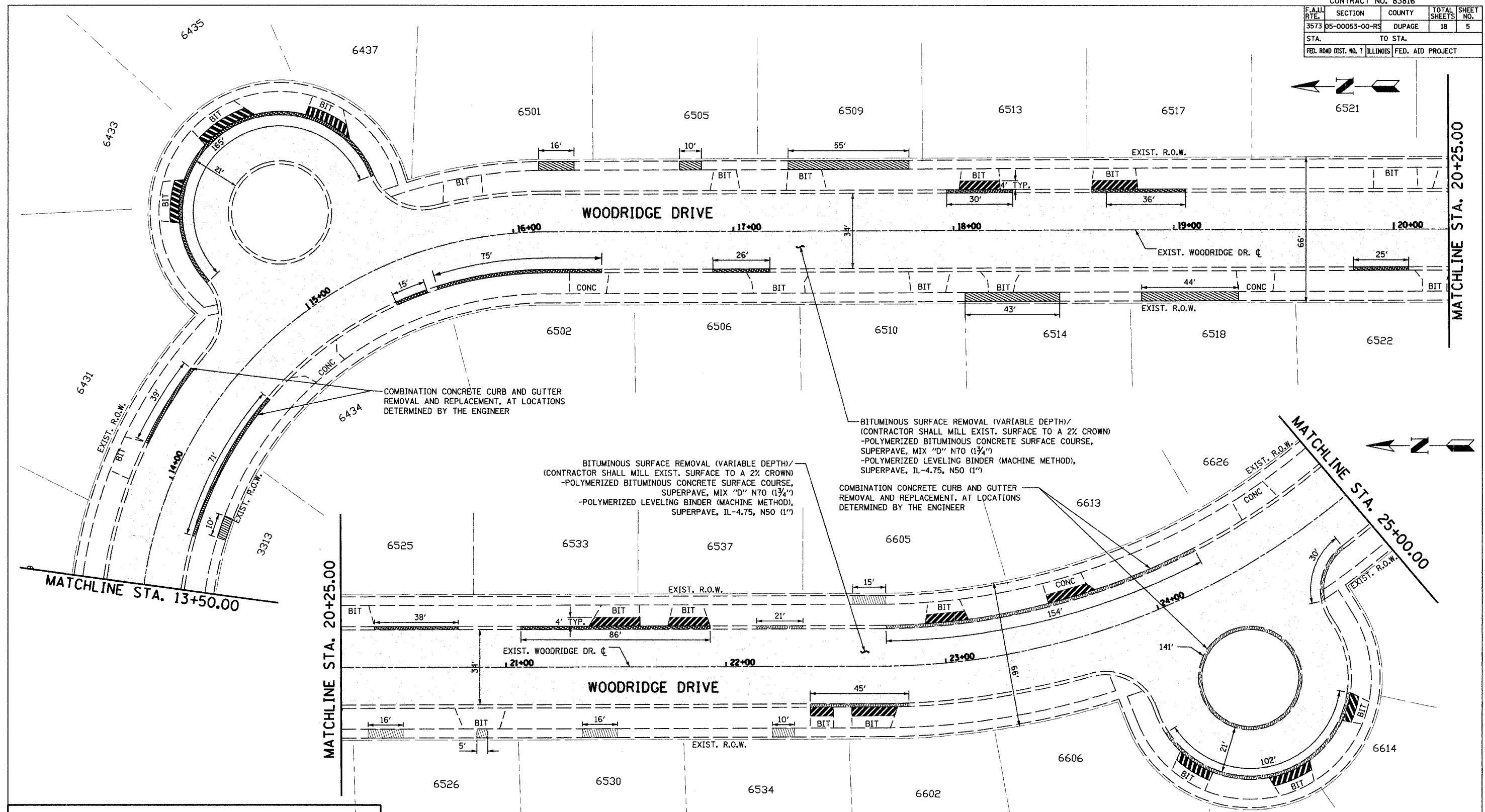


CONTRACT NO. 83816			
F.A.U. R.T.E.	SECTION	COUNTY	TOTAL SHEET NO.
3573	05-00053-00-RS	DUPAGE	18
STA.	TO STA.		
FED. ROAD DIST. NO. 7	ILLINOIS	FED. AID PROJECT	



COMBINATION CONCRETE CURB AND GUTTER REMOVAL AND REPLACEMENT, AT LOCATIONS DETERMINED BY THE ENGINEER

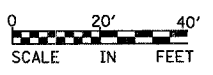
BITUMINOUS SURFACE REMOVAL (VARIABLE DEPTH)/ (CONTRACTOR SHALL MILL EXIST. SURFACE TO A 2% CROWN)
 -POLYMERIZED BITUMINOUS CONCRETE SURFACE COURSE, SUPERPAVE, MIX "D" N70 (1 3/4")
 -POLYMERIZED LEVELING BINDER (MACHINE METHOD), SUPERPAVE, IL-4.75, N50 (1")

BITUMINOUS SURFACE REMOVAL (VARIABLE DEPTH)/ (CONTRACTOR SHALL MILL EXIST. SURFACE TO A 2% CROWN)
 -POLYMERIZED BITUMINOUS CONCRETE SURFACE COURSE, SUPERPAVE, MIX "D" N70 (1 3/4")
 -POLYMERIZED LEVELING BINDER (MACHINE METHOD), SUPERPAVE, IL-4.75, N50 (1")

COMBINATION CONCRETE CURB AND GUTTER REMOVAL AND REPLACEMENT, AT LOCATIONS DETERMINED BY THE ENGINEER

NOTES:
 1. THE ACTUAL LOCATION AND QUANTITY OF CURB AND GUTTER REMOVAL AND REPLACEMENT, SIDEWALK REMOVAL AND REPLACEMENT, DRIVEWAY REMOVAL AND REPLACEMENT, AND PAVEMENT PATCHING WILL BE DETERMINED IN THE FIELD, DURING CONSTRUCTION, BY THE RESIDENT ENGINEER. HOWEVER FINAL QUANTITIES SHALL NOT EXCEED QUANTITIES ALLOTTED IN THE CONTRACT SUMMARY OF QUANTITIES.
 2. RESTORATION OF THE WORK AREA SHALL BE INCIDENTAL TO THE CONTRACT WITHOUT ANY EXTRA COMPENSATION ALLOWED TO THE CONTRACTOR.
 3. FRAMES AND GRATES TO BE ADJUSTED SHALL BE ADJUSTED AS NEEDED IN THE FIELD AS DETERMINED BY THE RESIDENT ENGINEER.

DATE = 04/25/05
 FILE NAME = 051154
 PLOT SCALE = 80SCALE
 USER NAME = 005878



LEGEND

1. SIDEWALK REMOVAL / PORTLAND CEMENT CONCRETE SIDEWALK 5"
2. DRIVEWAY REMOVAL 4' FROM BACK OF CURB (TYP.), UNLESS OTHERWISE SHOWN.
3. COMBINATION CONCRETE CURB & GUTTER REMOVAL AND REPLACEMENT
4. BITUMINOUS SURFACE REMOVAL

REVISIONS	
NAME	DATE

ILLINOIS DEPARTMENT OF TRANSPORTATION
 VILLAGE OF WOODRIDGE
REHABILITATION & RESURFACING PLAN
 STA. 13+50.00 TO STA. 25+00.00
 SCALE: VERT. 1" = 20'
 HORIZ. 1" = 40'
 DATE: SEPTEMBER 7, 2005
 DRAWN BY: LM
 CHECKED BY: KLM