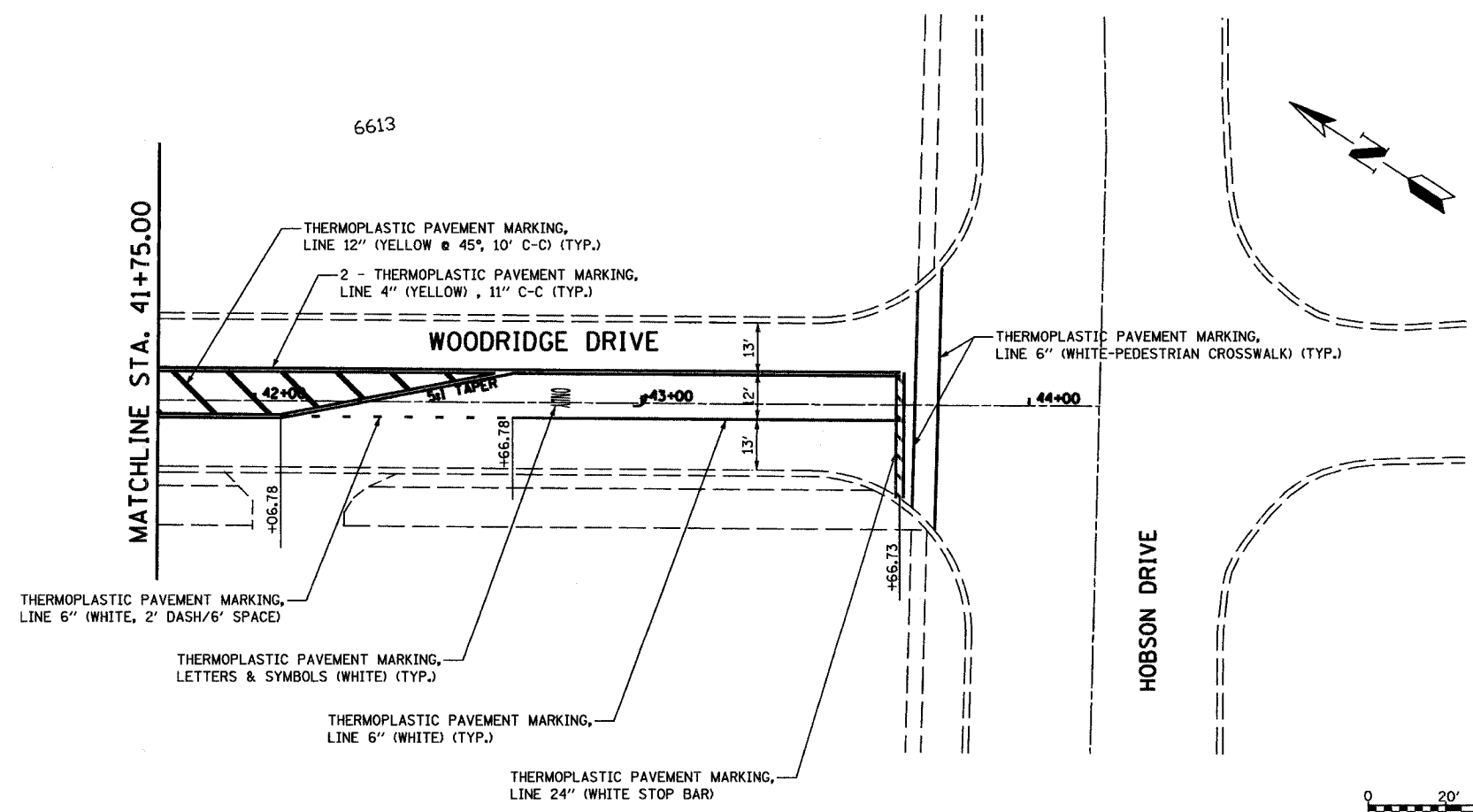
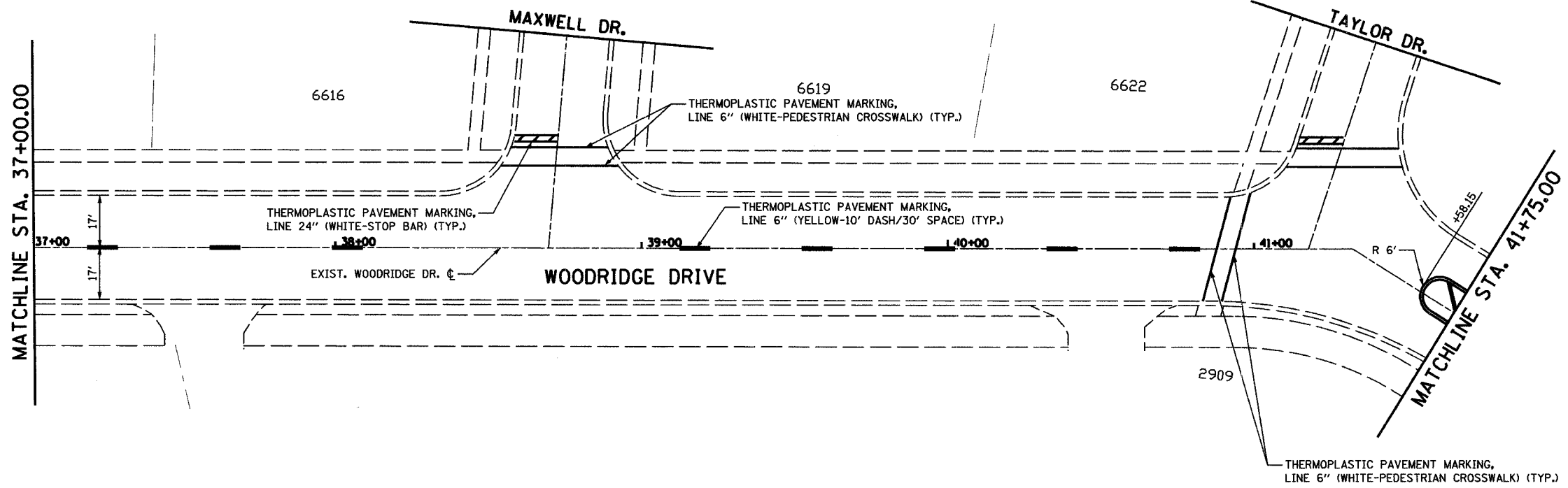


CONTRACT NO. 83816

F.A.U. RTE.	SECTION	COUNTY	TOTAL SHEETS	SHEET NO.
3573	05-00053-00-RS	DUPAGE	18	11
STA.		TO STA.		
FED. ROAD DIST. NO. 7		ILLINOIS	FED. AID PROJECT	



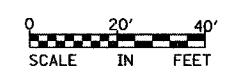
REVISIONS	
NAME	DATE

ILLINOIS DEPARTMENT OF TRANSPORTATION  
VILLAGE OF WOODRIDGE

**PROPOSED PAVEMENT MARKINGS**  
STA. 37+00.00 TO STA. 25+00.00

SCALE: VERT. 1" = 20'  
HORIZ. 1" = 20'  
DATE: SEPTEMBER 7, 2005

DRAWN BY: LM  
CHECKED BY: KLM



DATE =  
FILE NAME =  
PLOT SCALE =  
USER NAME =