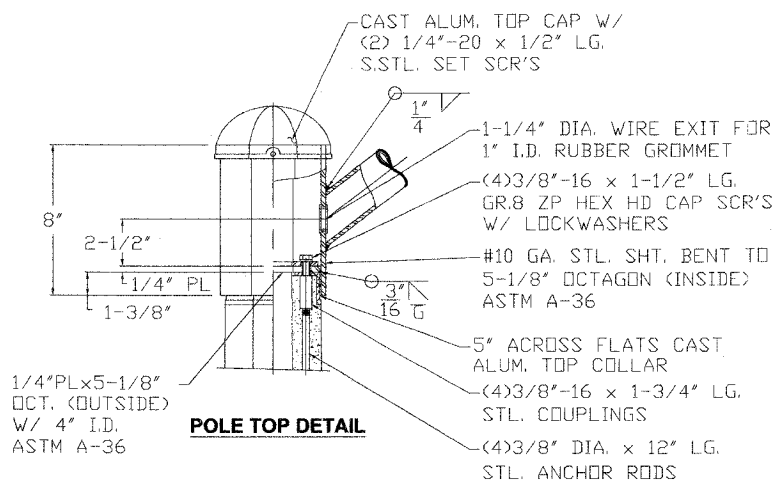
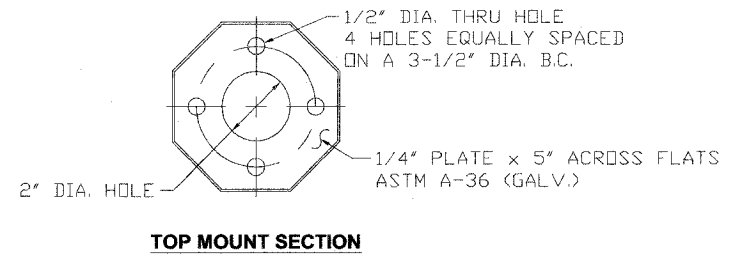
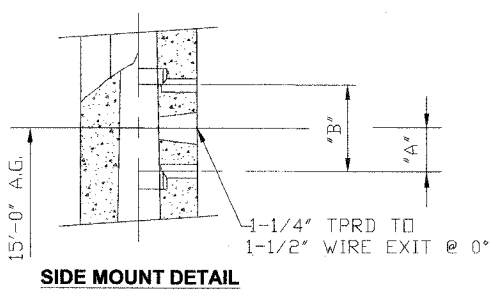
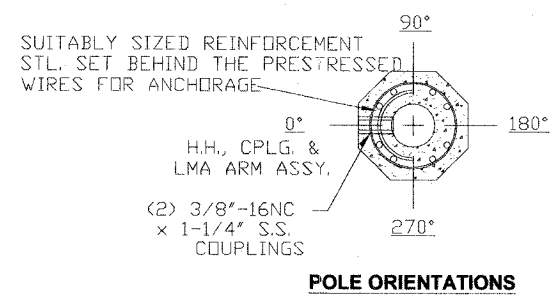
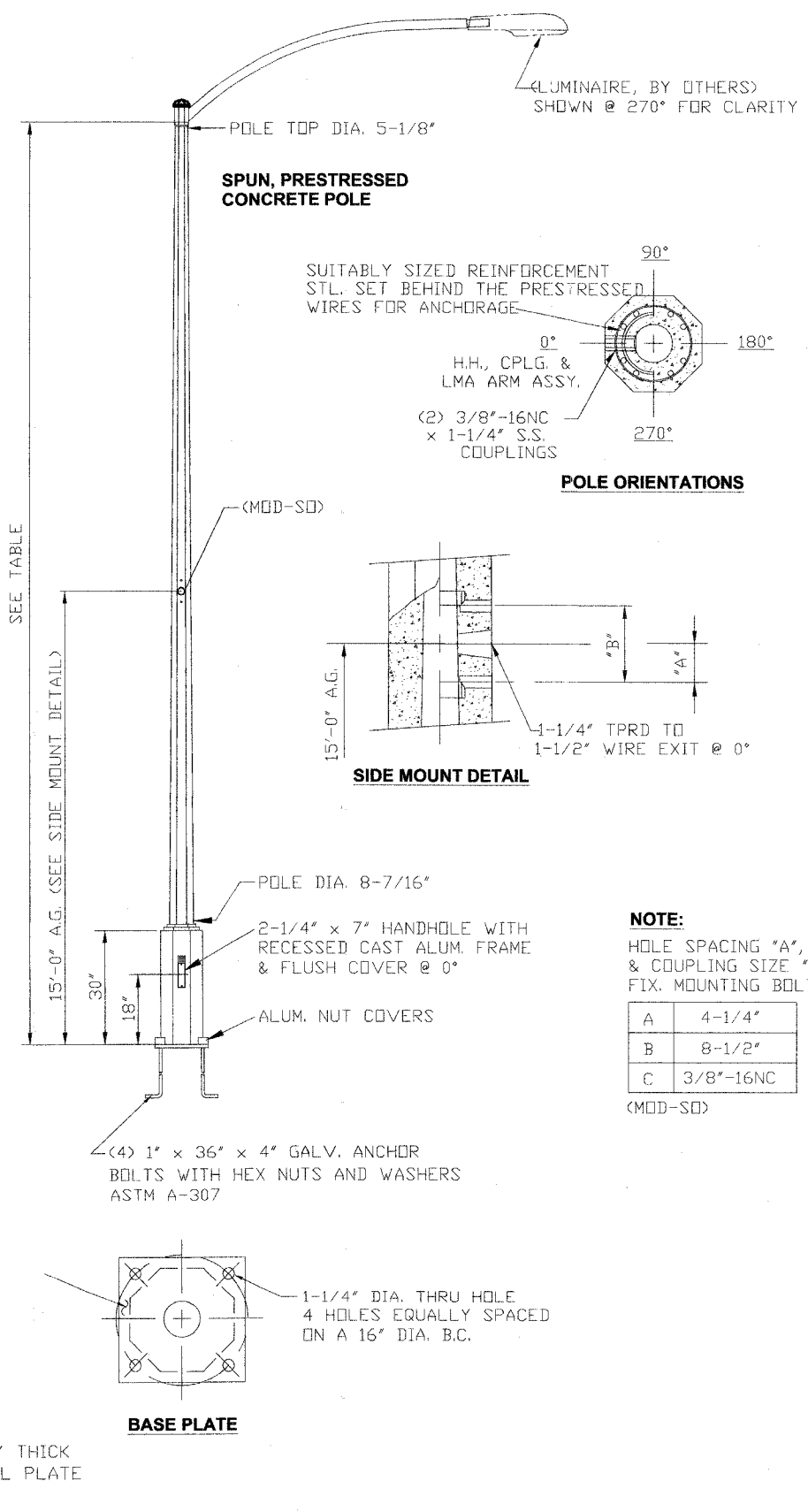


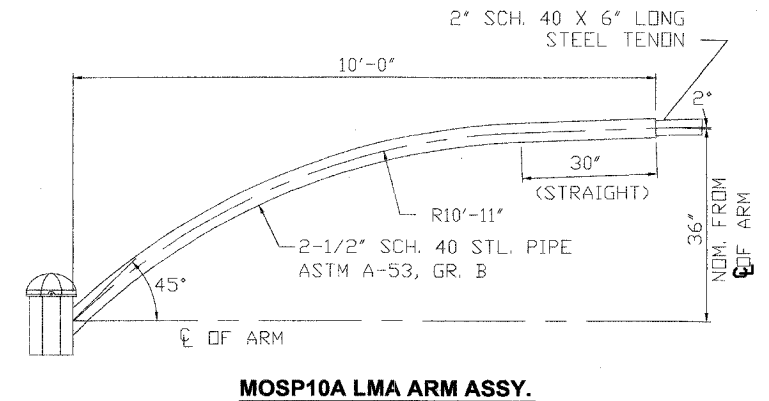
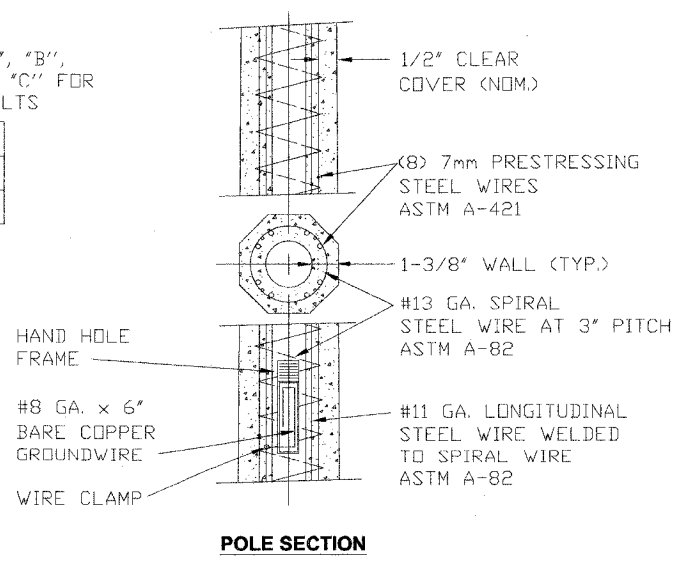
F.A. RTE.	SECTION	COUNTY	TOTAL SHEETS	SHEET NO.
01-00836-00 BR	COOK		18	17
STA.	TO STA.			
FED. ROAD DIST. NO.	ILLINOIS	FED. AID PROJECT		
CONTRACT NO. 83817				



NOTE:
HOLE SPACING "A", "B", & COUPLING SIZE "C" FOR FIX. MOUNTING BOLTS

A	4-1/4"
B	8-1/2"
C	3/8"-16NC

(MOD-SO)



MBI- MEDIUM BASEPLATE OCTAGONAL POLE

POLE DESIGNATION	POLE HEIGHT ABOVE GROUND	BUTT DIA.	BOLT CIRCLE	ULTIMATE G.L. MOMENT (ft.-lbs.)	WEIGHT (lbs.)
MBI-9	30'-6"	12-3/16"	16"	22,540	1,200

(6) POLES REQ'D. W/MOSP10A LMA ASSY. @ 0°.

NOTES:

- MIX (114S): GRAY, NATURAL, LIGHTLY POLISHED AGGREGATE FINISH WITH FLAT WATER SEALER.
- ASTM C-150 TYPE III GRAY CEMENT.
- f'c @ 28 DAYS=7,000 PSI, USING SPUN CYLINDER TEST.
- f'c @ 28 DAYS=5,000 PSI, USING ASTM C-31 CYLINDER TEST.
- POLES MANUFACTURED TO ASTM C-1089-97 SPECIFICATIONS.
- PROTECTIVE COAT EXPOSED P.C. WIRES AT POLE ENDS.
- MOD SO: SNGL 3/8" 1X2 @ 0° WITH WIRE EXIT.

REVISIONS	
NAME	DATE

ILLINOIS DEPARTMENT OF TRANSPORTATION

CITY OF OAK-PARK, IL

CONCRETE LIGHT POLE DETAILS

SCALE: AS SHOWN

DATE: 07/21/05

DRAWN BY: T.J.

CHECKED BY: S.C.

PLOT DATE = 07/21/05
FILE NAME = BRIDGE RENOVATION
PLOT SCALE = AS SHOWN