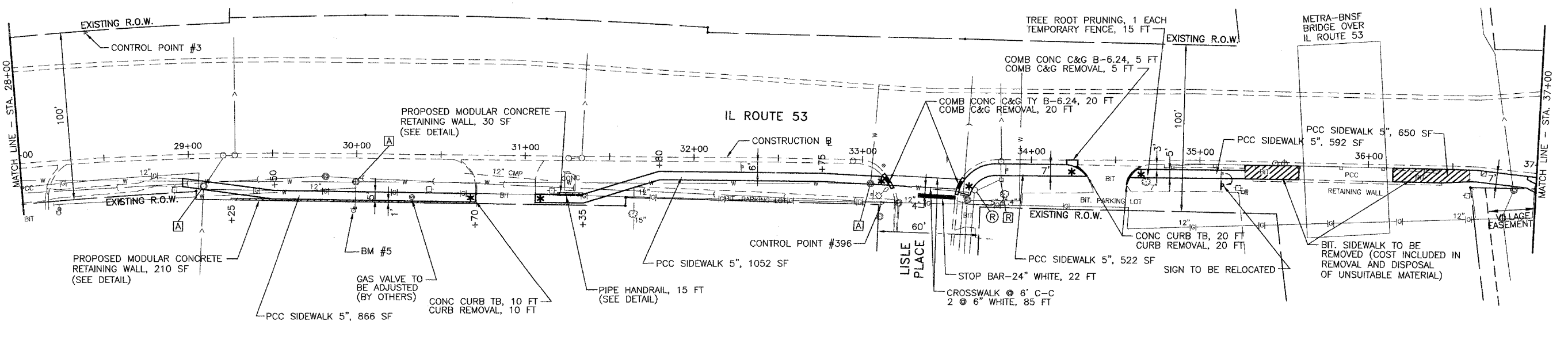
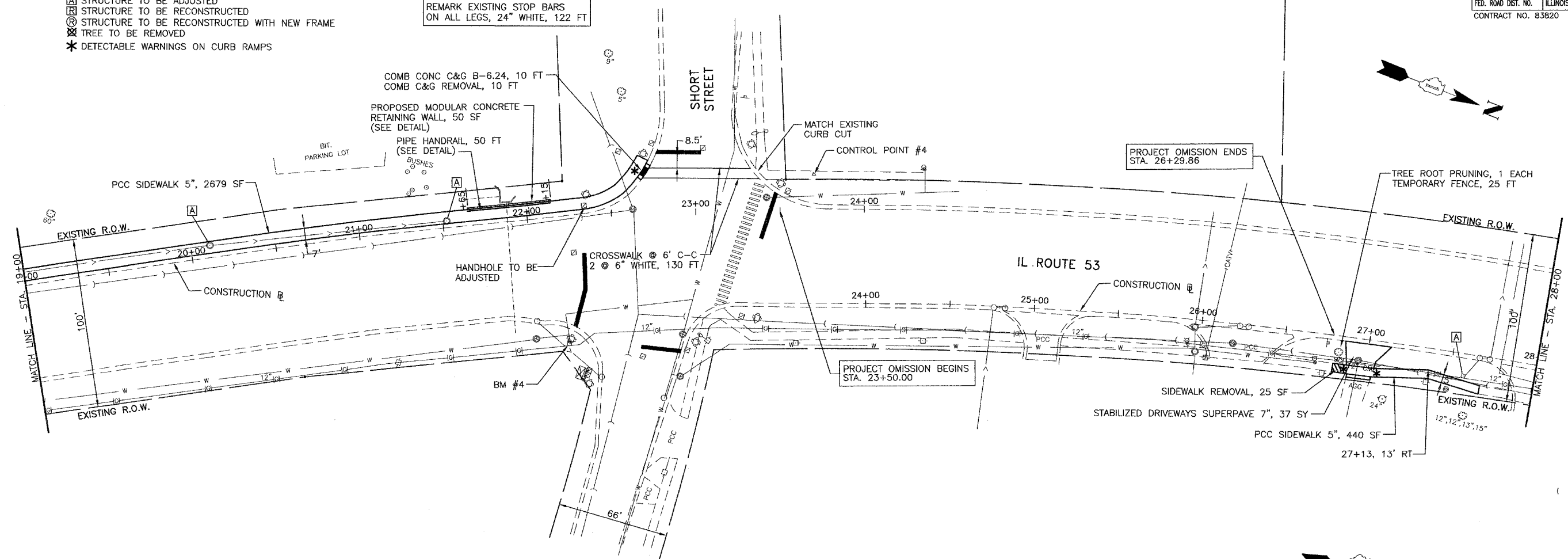


| | | | | |
|--------------------------|----------------|---|--------------|-----------|
| F.A.P. RTE. | SECTION | COUNTY | TOTAL SHEETS | SHEET NO. |
| 870 | 04-00051-00-SW | DuPAGE | 46 | 7 |
| STA. 19+00 TO STA. 37+00 | | FED. ROAD DIST. NO. ILLINOIS FED. AID PROJECT | | |
| CONTRACT NO. 83820 | | | | |

- LEGEND**
- [A] STRUCTURE TO BE ADJUSTED
 - [R] STRUCTURE TO BE RECONSTRUCTED
 - [R] STRUCTURE TO BE RECONSTRUCTED WITH NEW FRAME
 - ⊗ TREE TO BE REMOVED
 - * DETECTABLE WARNINGS ON CURB RAMPS

REMARK EXISTING STOP BARS ON ALL LEGS, 24" WHITE, 122 FT



DRAWN SMP
 CHECKED BDH

DATE . 9/21/05 .
 SCALE . 1" = 30' .

JAMES J. BENES & ASSOCIATES, INC.
 950 Warrenville Road, Suite 101, Lisle, Illinois 60532
 Tel. (630) 719-7570 · Fax (630) 719-7589



VILLAGE OF LISLE
IL ROUTE 53 SIDEWALK IMPROVEMENTS

| REVISIONS | | |
|-----------|------|-------------|
| NO. | DATE | DESCRIPTION |
| | | |
| | | |

GEOMETRIC PLAN

DRAWING NO.
 7 OF 46