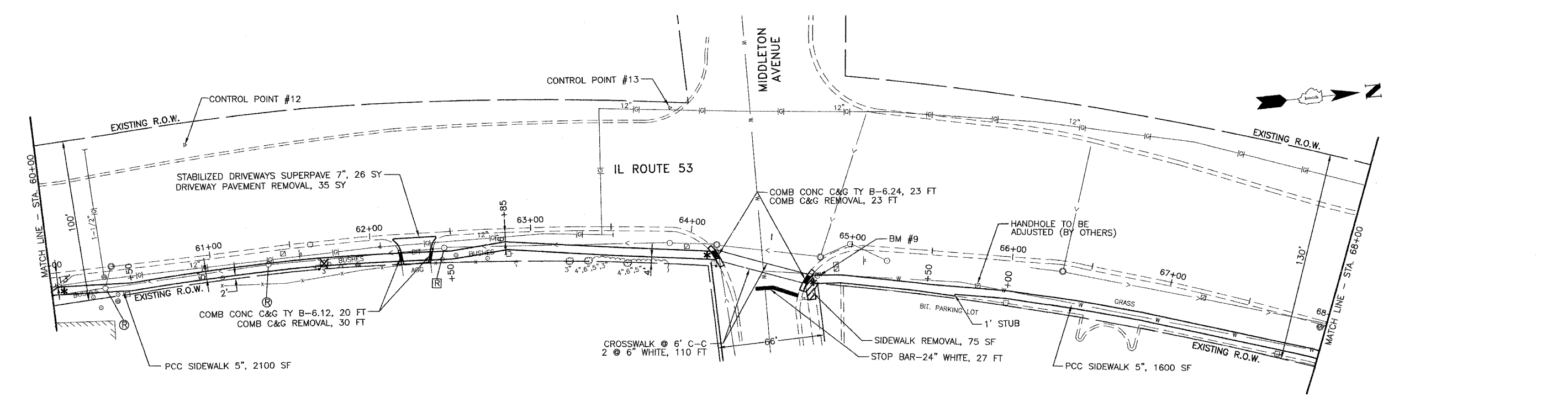
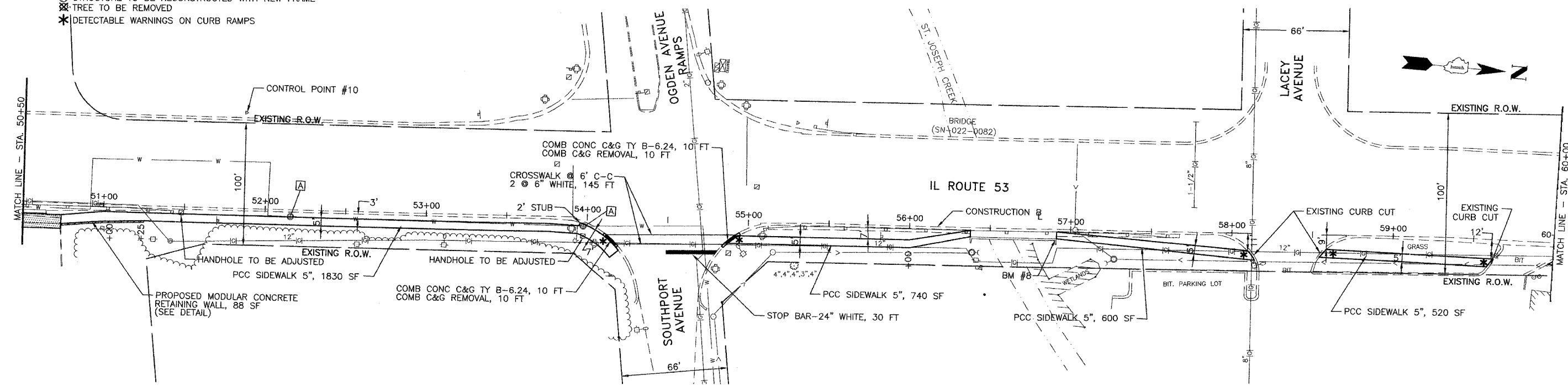


F.A.P. NO.	SECTION	COUNTY	TOTAL SHEETS	SHEET NO.
870	04-00051-00-SW	DuPAGE	46	9
STA. 50+50 TO STA. 68+00				
FED. ROAD DIST. NO.	ILLINOIS	FED. AID PROJECT		
CONTRACT NO. 83820				

- LEGEND**
- [A] STRUCTURE TO BE ADJUSTED
 - [R] STRUCTURE TO BE RECONSTRUCTED
 - [C] STRUCTURE TO BE RECONSTRUCTED WITH NEW FRAME
 - ⊗ TREE TO BE REMOVED
 - * DETECTABLE WARNINGS ON CURB RAMP



DRAWN SMP
 CHECKED BDH

DATE: 9/21/05
 SCALE: 1" = 30'

JAMES J. BENES & ASSOCIATES, INC.
 950 Warrenville Road, Suite 101, Lisle, Illinois 60532
 Tel. (630) 719-7570 • Fax (630) 719-7589



VILLAGE OF LISLE
IL ROUTE 53 SIDEWALK IMPROVEMENTS

REVISIONS		
NO.	DATE	DESCRIPTION

GEOMETRIC PLAN

DRAWING NO.
 9 OF 46