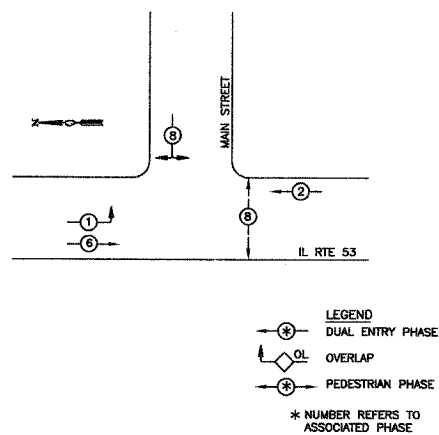


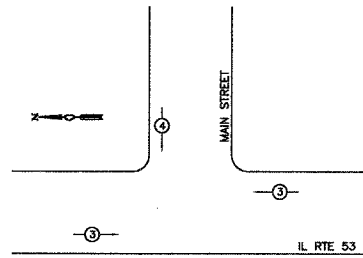
F.A.P. RTE.	SECTION	COUNTY	TOTAL SHEETS	SHEET NO.
870	04-00051-00-SW	DuPAGE	46	20
STA.		TO STA.		
FED. ROAD DIST. NO.	ILLINOIS	FED. AID PROJECT		
CONTRACT NO. 83820				

CONTROLLER SEQUENCE ☆



PHASE DESIGNATION DIAGRAM

EMERGENCY VEHICLE PRE-EMPTION SEQUENCE ☆



PROPOSED EMERGENCY VEHICLE PREEMPTIONS

EMERGENCY VEHICLE PREEMPTOR	3	4
MOVEMENT	←	↓

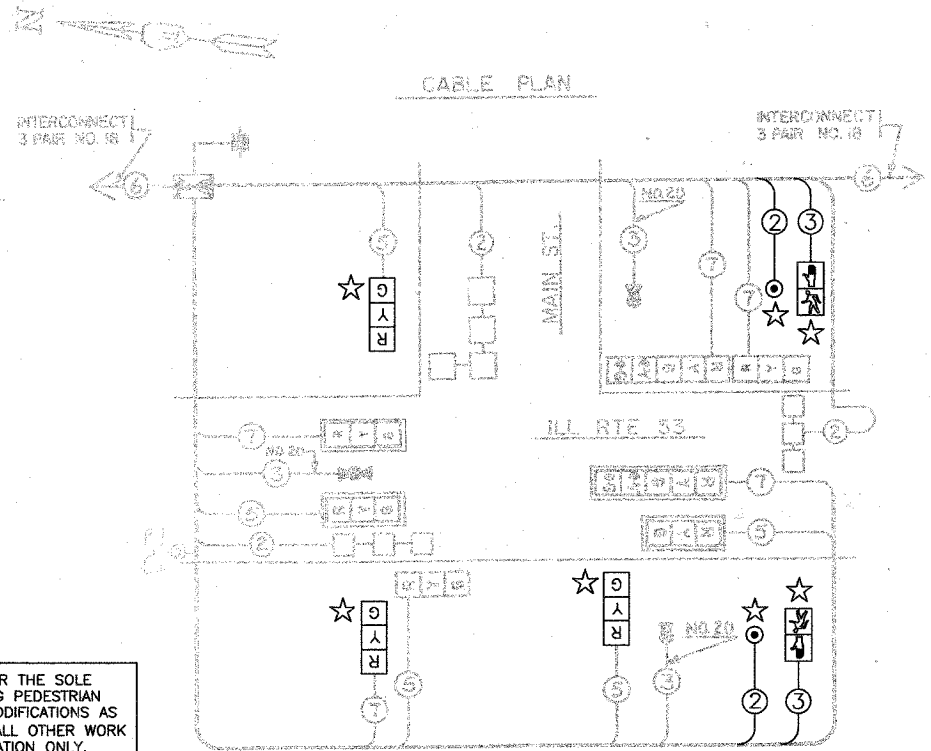
NOTE: THIS PLAN IS FOR THE SOLE PURPOSE OF INSTALLING PEDESTRIAN SIGNALS AND OTHER MODIFICATIONS AS INDICATED BY A ☆. ALL OTHER WORK SHOWN IS FOR INFORMATION ONLY.

SCHEDULE OF QUANTITIES

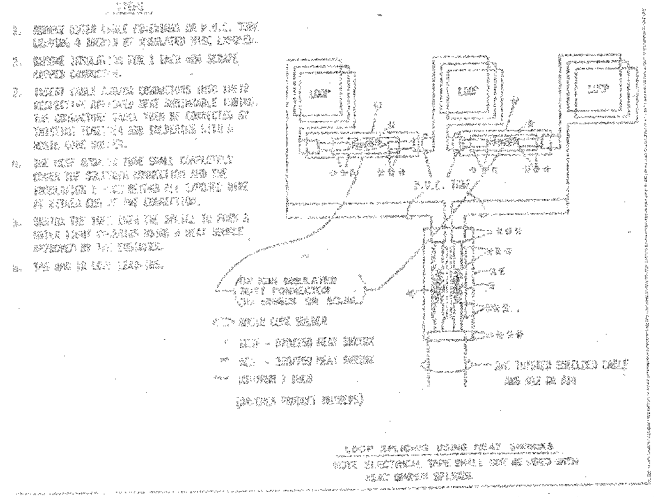
QUANTITY	UNIT	ITEM
8	SQ. FT.	SIGN PANEL TYPE 1
2	EACH	SIGNAL HEAD, ALUMINUM, 1-FACE, 3-SECTION, BRACKET MOUNTED
2	EACH	SIGNAL HEAD, ALUMINUM, 1-FACE, 3-SECTION, MAST ARM MOUNTED
2	EACH	SIGNAL HEAD, ALUMINUM, 1-FACE, 5-SECTION, MAST ARM MOUNTED
1	EACH	SIGNAL HEAD, ALUMINUM, 2-FACE, 5-SECTION, BRACKET MOUNTED
1	EACH	SIGNAL HEAD, ALUMINUM, 2-FACE, 1-3 SECTION, 1-4 SECTION, BRACKET MOUNTED
1	EACH	TRAFFIC SIGNAL POST, 14 FT.
1	EACH	TRAFFIC SIGNAL POST, 15 FT.
2	EACH	TRAFFIC SIGNAL POST, 18 FT.
1	EACH	STEEL MAST ARM ASSEMBLY AND POLE 22 FT.
1	EACH	STEEL MAST ARM ASSEMBLY AND POLE 24 FT.
1	EACH	FULL-AUTOMATIC CONTROLLER, SPECIAL SEQUENCE, 3 PHASES, IN TYPE 74 CABINET
2	EACH	FIRE PREEMPTOR
1	EACH	COORDINATION MODULE
1	EACH	TELEPHONE HANDLE
4	EACH	INDUCTION LOOP DETECTOR AMPLIFIER
360	LIN. FT.	DETECTOR LOOP
10	LIN. FT.	GALVANIZED STEEL CONDUIT IN TRENCH 1-1/2"
624	LIN. FT.	GALVANIZED STEEL CONDUIT IN TRENCH 2"
108	LIN. FT.	GALVANIZED STEEL CONDUIT IN TRENCH 2-1/2"
15	LIN. FT.	GALVANIZED STEEL CONDUIT IN TRENCH 3"
10	LIN. FT.	GALVANIZED STEEL CONDUIT IN TRENCH 4"

85	LIN. FT.	GALVANIZED STEEL CONDUIT, PUSHD 2"
65	LIN. FT.	GALVANIZED STEEL CONDUIT, PUSHD 2-1/2"
75	LIN. FT.	GALVANIZED STEEL CONDUIT, PUSHD 3"
56	LIN. FT.	UNIT DUCT, WITHOUT CABLE IN TRENCH, 2"
11	LIN. FT.	ELECTRIC CABLE IN CONDUIT NO. 6 2/C
654	LIN. FT.	ELECTRIC CABLE IN CONDUIT NO. 14 5/C
628	LIN. FT.	ELECTRIC CABLE IN CONDUIT NO. 14 2/C
829	LIN. FT.	ELECTRIC CABLE IN CONDUIT NO. 14 2/C TWISTED, SHIELDED
1	EACH	SERVICE INSTALLATION, TYPE C
12	LIN. FT.	CONCRETE FOUNDATION, TYPE A
3.5	LIN. FT.	CONCRETE FOUNDATION, TYPE B
20	LIN. FT.	CONCRETE FOUNDATION, TYPE C 24-INCH DIAMETER
6	EACH	CONCRETE MANHOLE
1	EACH	CONCRETE HEAVY-DUTY MANHOLE
1	EACH	CONCRETE DOUBLE MANHOLE
5	EACH	EMERGENCY VEHICLE PRIORITY SYSTEM, DETECTOR UNIT
1	EACH	EMERGENCY VEHICLE PRIORITY SYSTEM, SENSING UNIT
361	LIN. FT.	EMERGENCY VEHICLE PRIORITY SYSTEM, LEAD-IN CABLE IN CONDUIT

SCHEDULE OF QUANTITIES		
IL ROUTE 53 (Lincoln Avenue) and MAIN STREET		
1	EACH	MAINTENANCE OF TRAFFIC SIGNAL INSTALLATION
342	FOOT	ELECTRIC CABLE IN CONDUIT, SIGNAL NO. 14 2C
360	FOOT	ELECTRIC CABLE IN CONDUIT, SIGNAL NO. 14 3C
2	EACH	PEDESTRIAN SIGNAL HEAD, L.E.D. 1-FACE BRACKET MOUNTED
2	EACH	PEDESTRIAN PUSH-BUTTON
1	EACH	MODIFY EXISTING CONTROLLER
3	EACH	SIGNAL HEAD, 1-FACE, 3-SECTION, BRACKET MOUNTED
1	EACH	REMOVE EXISTING TRAFFIC SIGNAL EQUIPMENT



- 8" TRAFFIC SIGNAL SECTION
- 12" TRAFFIC SIGNAL SECTION
- 12" PEDESTRIAN SIGNAL SECTION
- CONTROLLER CABINET
- SERVICE INSTALLATION
- VEHICLE DETECTOR, INDUCTION LOOP
- PUSHBUTTON DETECTOR
- DENOTES NUMBER OF CONDUCTORS (CABLE)
- ALL LOOP DETECTOR CABLE TO BE SHIELDED. ALL CABLE W/IN 14 EXCEPT AS INDICATED.
- INDICATED EXISTING CABLE
- SIGNAL HEAD WITH BACKPLATE
- "P" INDICATES PROPOSED
- EXISTING SIGNAL SECTION
- MAGNETIC DETECTOR
- OPTICAL DETECTOR
- PUSHBUTTON DETECTOR
- 12" (300mm) PEDESTRIAN SIGNAL SECTION



SCHEDULE OF SIGNAL HEADS

2	EACH	SIGNAL HEAD, ALUMINUM, 1-FACE, 3-SECTION WITH 12" LENSES, BRACKET MOUNTED
2	EACH	SIGNAL HEAD, ALUMINUM, 1-FACE, 3-SECTION WITH 12" LENSES, MAST ARM MOUNTED
2	EACH	SIGNAL HEAD, ALUMINUM, 1-FACE, 5-SECTION WITH 12" LENSES, MAST ARM MOUNTED
1	EACH	SIGNAL HEAD, ALUMINUM, 2-FACE, 1-3 SECTION, 1-4 SECTION WITH 12" LENSES, BRACKET MOUNTED
1	EACH	SIGNAL HEAD, ALUMINUM, 2-FACE, 5-SECTION WITH 12" LENSES, BRACKET MOUNTED

☆ Plans revised by JAMES J. BENES & ASSOCIATES

REVISIONS	
NAME	DATE
ADDITION OF PEDESTRIAN EQUIPMENT	04/25/05

Illinois Department of Transportation
ILL RTE 53 & MAIN ST.

CABLE PLAN
SEQUENCE OF OPERATION
SCHEDULE OF SIGNAL HEADS
SCHEDULE OF QUANTITIES

SCALE: 1" = 20'
DATE: 7-24-05
DRAWN BY: MJM
CHECKED BY: DUF