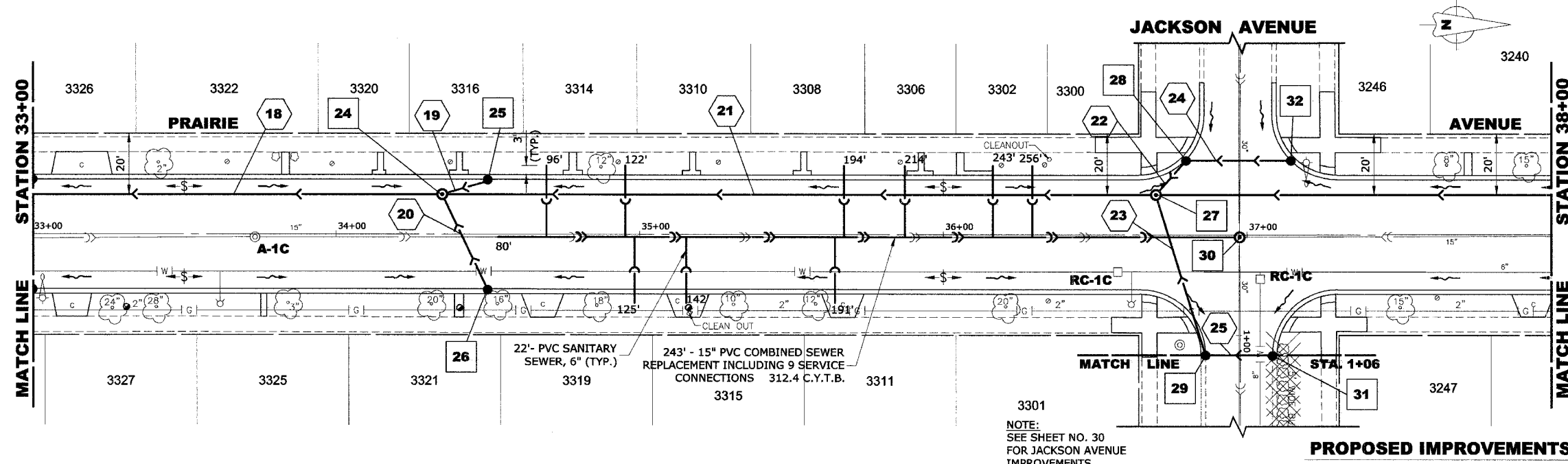


STRUC. NO.	STA.	OFFSET	TYPE	RIM ELEV.	INV. ELEV.
24	34+35	13' LT	R.D. MANHOLE, 5' DIA., TYPE 1 FRAME, CLOSED LID	618.80	614.35 NW 614.15 NE 611.75 N-S
25	34+50	18' LT	R.D. CATCH BASIN, 4' DIA. TYPE 1 FRAME, OPEN LID	618.50	614.50
26	34+50	18' RT	R.D. CATCH BASIN, 4' DIA. TYPE 1 FRAME, OPEN LID	618.50	614.50
27	36+70	13' LT	R.D. MANHOLE, 5' DIA., TYPE 1 FRAME, CLOSED LID	619.20	614.10 NW 613.75 NE 612.00 N-S
28	36+79	24' LT	R.D. CATCH BASIN, 4' DIA. TYPE 1 FRAME, OPEN LID	618.70	614.35 N 614.20 SE
29	36+80	21' RT	R.D. CATCH BASIN, 4' DIA. TYPE 1 FRAME, OPEN LID	618.60	614.40 N 614.30 SW
30	36+98	1' RT	R.D. COMBINED SEWER MANHOLE, 5' DIA., TYPE 1 FRAME, CLOSED LID	619.54	608.98 N-S 608.45 E-W
31	37+15	21' RT	R.D. CATCH BASIN, 4' DIA. TYPE 1 FRAME, OPEN LID	618.60	614.60
32	37+15	24' LT	R.D. CATCH BASIN, 4' DIA. TYPE 1 FRAME, OPEN LID	618.70	614.70



PIPE NO.	LENGTH	DIA.	TYPE	SLOPE	C.Y.T.B.
18	150'	36"	SS, TY-2, RCCP, CL-III	0.10%	132.7
19	15'	10"	SS,PVC, SDR 26	1.00%	0.9
20	35'	10"	SS,PVC, SDR 26	1.00%	2.3
21	235'	36"	SS, TY-2, RCCP, CL-III	0.11%	203.7
22	15'	12"	SS,PVC, SDR 26	1.00%	1.5
23	55'	12"	SS,PVC, SDR 26	1.00%	5.8
24	35'	10"	SS,PVC, SDR 26	1.00%	2.1
25	20'	10"	SS,PVC, SDR 26	1.00%	1.1

