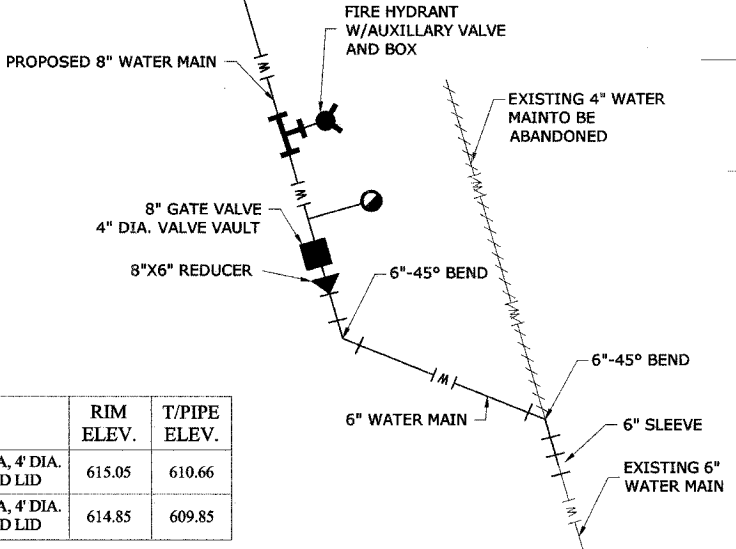


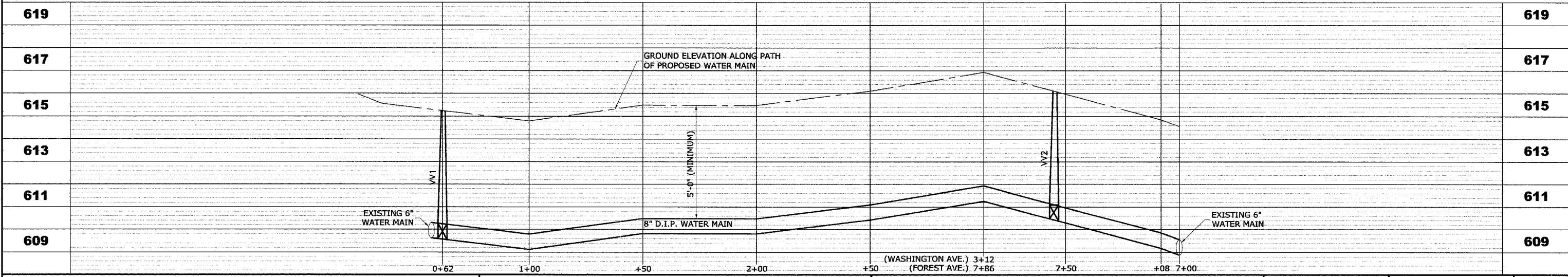
DETAIL OF CONNECTION TO EXISTING WATER MAIN ON PRAIRIE AVENUE

STRUC. NO.	STA.	OFFSET	TYPE	RIM ELEV.	T/PIPE ELEV.
VV1	0+62	30' RT.	VALVE VAULT, TYPE A, 4' DIA. TYPE 1 FRAME, CLOSED LID	615.05	610.66
VV2	FOREST 7+15	29' LT	VALVE VAULT, TYPE A, 4' DIA. TYPE 1 FRAME, CLOSED LID	614.85	609.85

NOTE: PROPOSED WATER SERVICE BOXES TO BE LOCATED BETWEEN THE RIGHT-OF-WAY AND BACK OF SIDEWALK



DETAIL OF CONNECTION TO EXISTING WATER MAIN ON FOREST AVENUE



HANCOCK ENGINEERING

- Civil Engineers
- Municipal Consultants
- Established 1911

9933 Roosevelt Road
Westchester, Illinois 60154-2790
Phone: 708/865-8300
Fax: 708/865-1212

**PRAIRIE AVENUE IMPROVEMENTS
PHASE I
VILLAGE OF BROOKFIELD, ILLINOIS**

PROPOSED DRAINAGE AND UTILITIES PLAN

SCALE: H: 1"=20', V: 1"=2'

DRAWN BY: MK/LEV

BOOK NO.: #1475, #1504

DATE: 11-04-05

E.H.E. NO.: 125-04-26301

REVISION:

SHEET **28** OF **49**