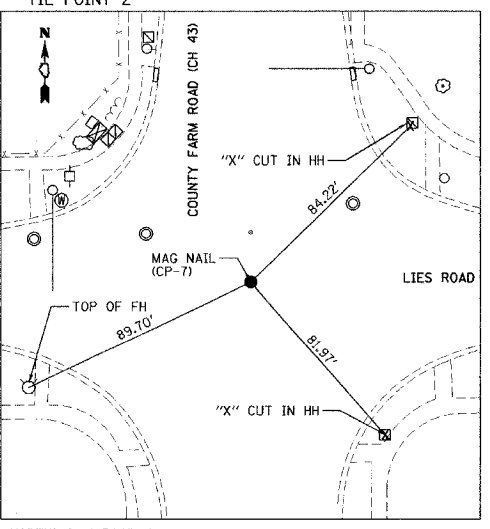
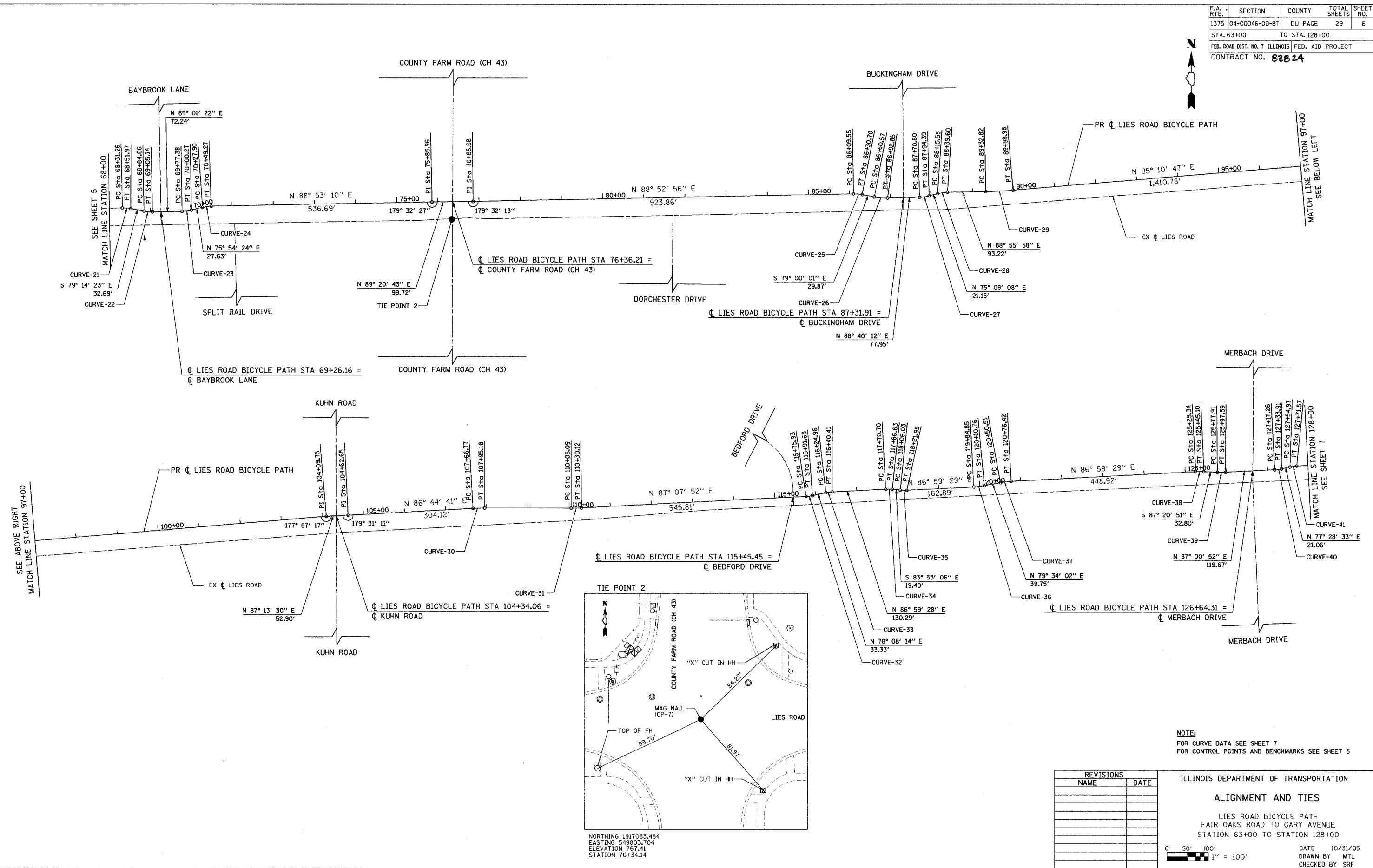


F.A. RTE.	SECTION	COUNTY	TOTAL SHEETS	SHEET NO.
1375	04-00046-00-BT	DU PAGE	29	6
STA. 63+00		TO STA. 128+00		
FED. ROAD DIST. NO. 7		ILLINOIS FED. AID PROJECT		
CONTRACT NO. 838 24				

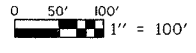


NORTHING 1917083.484
 EASTING 549803.704
 ELEVATION 767.41
 STATION 76+34.14

NOTE:
 FOR CURVE DATA SEE SHEET 7
 FOR CONTROL POINTS AND BENCHMARKS SEE SHEET 5

REVISIONS	
NAME	DATE

ILLINOIS DEPARTMENT OF TRANSPORTATION
ALIGNMENT AND TIES
 LIES ROAD BICYCLE PATH
 FAIR OAKS ROAD TO GARY AVENUE
 STATION 63+00 TO STATION 128+00



DATE 10/31/05
 DRAWN BY MTL
 CHECKED BY SRF



FINAL