

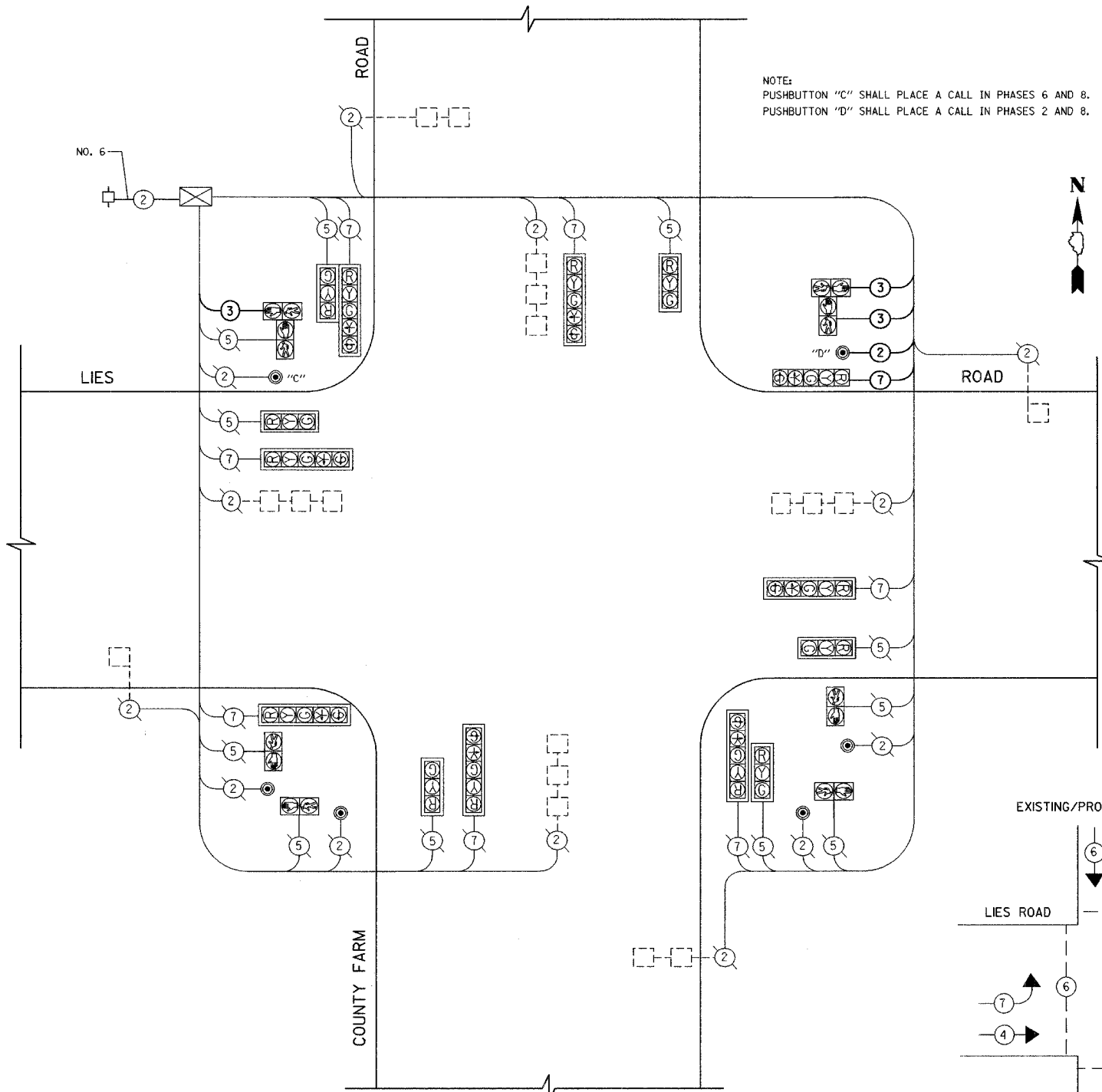
SCHEDULE OF QUANTITIES

QUANTITY	UNIT	ITEM
24	FT	CONDUIT IN TRENCH, 2 1/2" DIA., GALVANIZED STEEL
24	FT	TRENCH AND BACK FILL FOR ELECTRICAL WORK
1	EACH	MAINTENANCE OF EXISTING TRAFFIC SIGNAL INSTALLATION
220	FT	ELECTRIC CABLE IN CONDUIT, SIGNAL NO. 14 2C
518	FT	ELECTRIC CABLE IN CONDUIT, SIGNAL NO. 14 3C
229	FT	ELECTRIC CABLE IN CONDUIT, SIGNAL NO. 14 7C
4	FT	CONCRETE FOUNDATION, TYPE A
1	FT	DRILL EXISTING HANDHOLE
1	EACH	RELOCATE EXISTING SIGNAL HEAD
3	EACH	RELOCATE EXISTING PEDESTRIAN SIGNAL HEAD
1	EACH	RELOCATE EXISTING PEDESTRIAN PUSH-BUTTON
1	EACH	RELOCATE EXISTING TRAFFIC SIGNAL POST
1	EACH	REMOVE EXISTING TRAFFIC SIGNAL EQUIPMENT
1	EACH	REMOVE EXISTING CONCRETE FOUNDATION
800	FT	REMOVE ELECTRIC CABLE FROM CONDUIT

NOTE:
 PUSHBUTTON "C" SHALL PLACE A CALL IN PHASES 6 AND 8.
 PUSHBUTTON "D" SHALL PLACE A CALL IN PHASES 2 AND 8.

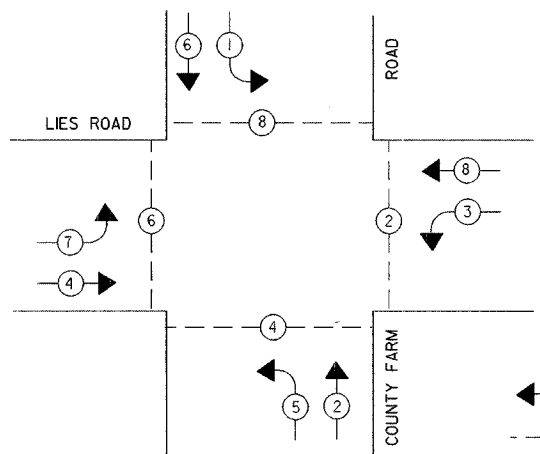
CABLE PLAN LEGEND

- | | | |
|--|--|--|
| | | SIGNAL FACE WITH BACKPLATE
"P" INDICATES PROGRAMMED HEAD |
| | | GROUND ROD AT HANDHOLE,
DOUBLE HANDHOLE, OR CONTROLLER |
| | | GROUND ROD AT POST
OR MAST ARM POLE |
| | | GROUND ROD AT ELECTRIC
SERVICE INSTALLATION |
| | | GROUND CABLE IN CONDUIT,
NO. 6 SOLID COPPER (GREEN) |
| | | FIBER OPTIC CABLE IN CONDUIT,
NO. 62.5/125 MM12F SM12F |
| | | ELECTRIC CABLE IN CONDUIT,
NO. 18, 6 PAIR TWISTED, SHIELDED |
| | | 8" (200mm)
TRAFFIC SIGNAL SECTION |
| | | 12" (300mm)
TRAFFIC SIGNAL SECTION |
| | | 12" (300mm)
PEDESTRIAN SIGNAL SECTION |
| | | 12" (300mm) COUNTDOWN TIMER |
| | | CONTROLLER CABINET
SERVICE INSTALLATION |
| | | PUSHBUTTON DETECTOR |
| | | VEHICLE DETECTOR, INDUCTION LOOP |
| | | DENOTES NUMBER OF CONDUCTORS
ALL CABLE NO. 14 EXCEPT AS INDICATED
ALL LOOP DETECTOR CABLE TO BE SHIELDED |



CABLE PLAN
NOT TO SCALE

EXISTING/PROPOSED CONTROLLER SEQUENCE



- LEGEND**
- DUAL ENTRY PHASE
 - PEDESTRIAN PHASE
 - * NUMBER REFERS TO ASSOCIATED PHASE

I.D.O.T. TRAFFIC SIGNAL INSTALLATION ELECTRICAL SERVICE REQUIREMENTS

TYPE	NO. LAMPS	WATTAGE		TOTAL WATTAGE
		INCAND.	LED	
SIGNAL (RED)	15	135	17	0.50
(YELLOW)	15	135	25	0.25
(GREEN)	15	135	15	0.25
ARROW	22	135	12	0.10
PED SIGNAL	8	90	25	1.00
CONTROLLER	1	100	100	1.00
ILLUM. SIGN	0	252	0.05	
TOTAL =				

ENERGY COSTS TO: _____

ENERGY SUPPLY CONTACT: _____
 PHONE: _____
 COMPANY: _____

FOUNDATION (DEPTH)	FT.	CABLE SLACK	FT.	VERTICAL	FT.
TYPE A - POST	4	HANDHOLE	6.5	ALL FOUNDATIONS	3.5
D - CONTROLLER	4	DOUBLE HANDHOLE	13	MAST ARM LENGTH TO SIGNAL = L	20'+L=
E - M. ARM POLE	10	SIGNAL POST	2	BRACKET MOUNTED	13
24" (600mm)	10	CONTROLLER CAB.	1	PED. PUSHBUTTON	4
30" (750mm)	15	FIBER OPTIC	13	ELECTRIC SERVICE	13.5
		ELECTRIC SERVICE	1	SERVICE TO GROUND	13.5
		GROUND CABLE	1	POST MOUNTED	6

REVISIONS	
NAME	DATE

ILLINOIS DEPARTMENT OF TRANSPORTATION
CABLE PLAN, SEQUENCE OF OPERATIONS AND SCHEDULE OF QUANTITIES
 LIES ROAD AT COUNTY FARM ROAD
 LIES ROAD BICYCLE PATH
 FAIR OAKS ROAD TO GARY AVENUE

DATE 10/31/05
 DRAWN BY GEW
 CHECKED BY SRF

SCALE: NONE

