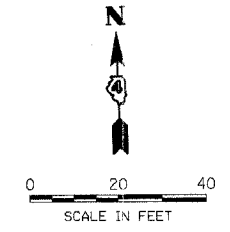
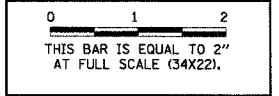


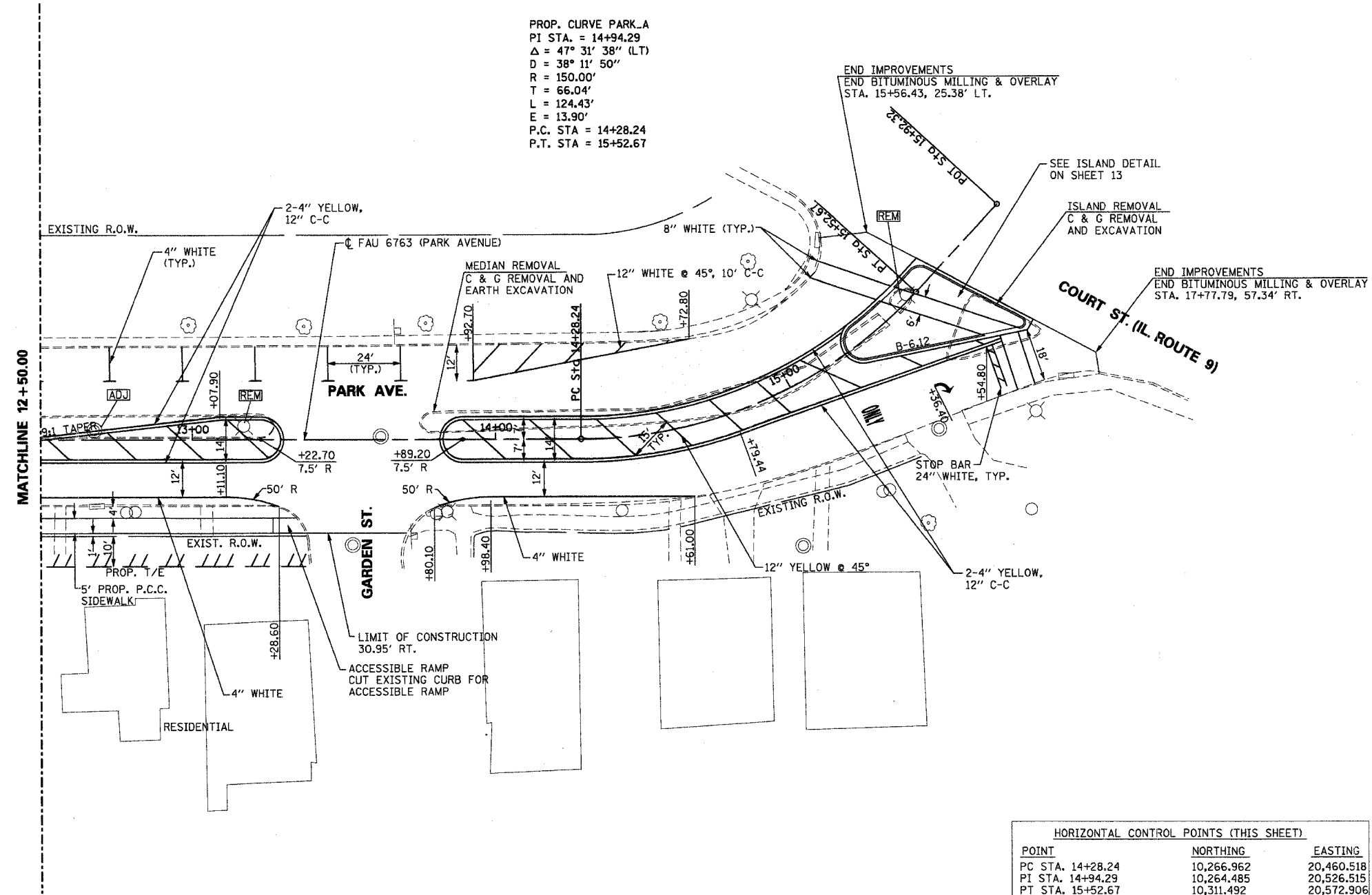
F.A. RTE. 6708  
SECTION 03-00170-00-TL  
COUNTY: TAZEWELL  
CONTRACT NO. 89353  
CAT NO. 032923-00



REVISIONS		
NUMBER	BY	DATE



PROP. CURVE PARK\_A  
PI STA. = 14+94.29  
 $\Delta = 47^\circ 31' 38''$  (LT)  
D = 38° 11' 50"  
R = 150.00'  
T = 66.04'  
L = 124.43'  
E = 13.90'  
P.C. STA = 14+28.24  
P.T. STA = 15+52.67



HORIZONTAL CONTROL POINTS (THIS SHEET)		
POINT	NORTHING	EASTING
PC STA. 14+28.24	10,266.962	20,460.518
PI STA. 14+94.29	10,264.485	20,526.515
PT STA. 15+52.67	10,311.492	20,572.906

**CITY OF PEKIN, IL  
INTERSECTION RECONSTRUCTION  
14TH ST. & PARK AVE.  
PARK AVENUE  
STA. 12+50.00 TO STA. 15+71.95**

© Copyright CMT, Inc.  
**CMT**  
CRAWFORD, MURPHY & TILLY, INC.  
CONSULTING ENGINEERS  
License No. 184-000613

DESIGN BY: R.M.M.  
DRAWN BY: N.D.S.  
CHECKED BY: E.J.H.  
APPROVED BY:  
DATE: 10/12/05  
JOB No: 05069-02-00