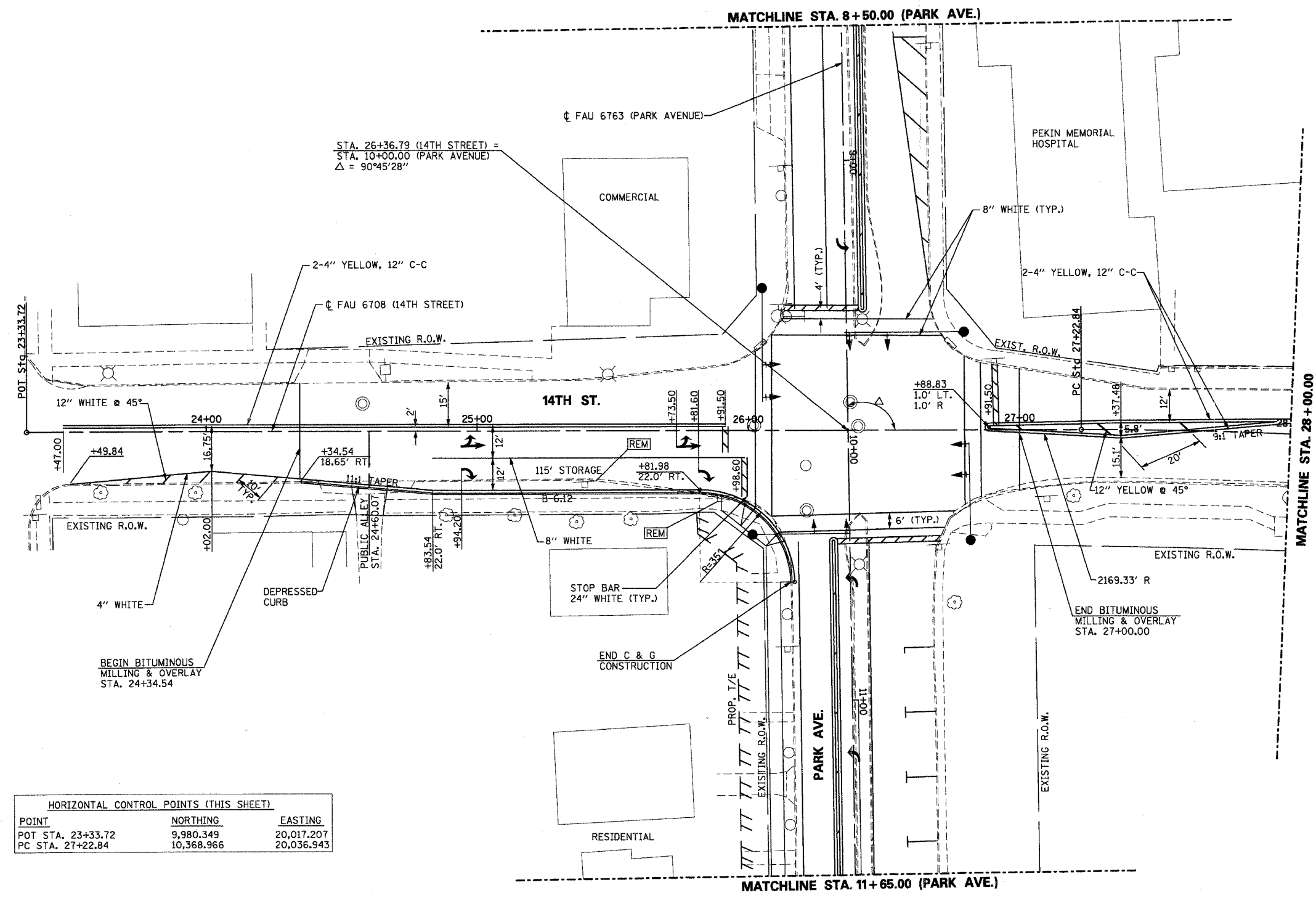
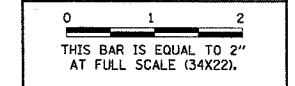


F.A. RTE. 6708
 SECTION 03-00170-00-TL
 COUNTY: TAZEWELL
 CONTRACT NO. 89353
 CAT NO. 032923-00

REVISIONS		
NUMBER	BY	DATE



HORIZONTAL CONTROL POINTS (THIS SHEET)		
POINT	NORTHING	EASTING
POT STA. 23+33.72	9,980.349	20,017.207
PC STA. 27+22.84	10,368.966	20,036.943

CITY OF PEKIN, IL
INTERSECTION RECONSTRUCTION
14TH ST. & PARK AVE.

14TH STREET
STA. 24+34.54 TO STA. 28+00.00

Copyright CMT, Inc.
CMT
 CRAWFORD, MURPHY & TILLY, INC.
 CONSULTING ENGINEERS
 License No. 184-000613

DESIGN BY:	R.M.M.
DRAWN BY:	N.D.S.
CHECKED BY:	E.J.H.
APPROVED BY:	
DATE:	10/12/05
JOB No:	05069-02-00
SHEET 10 OF 17 SHEET	