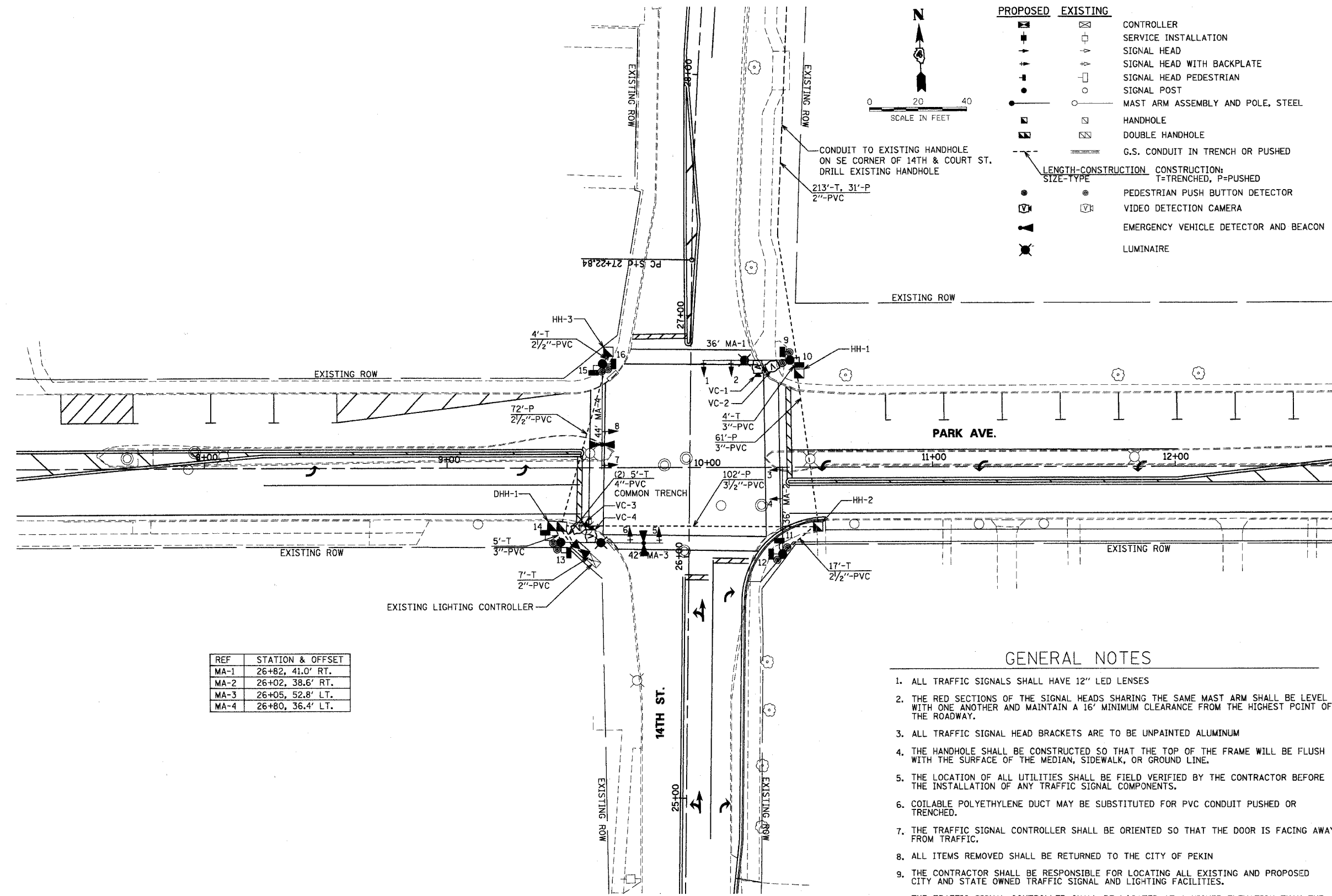
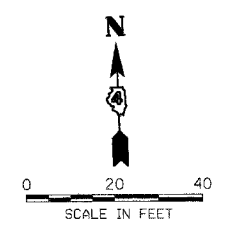


F.A. RTE. 6708
SECTION 03-0070-00-TL
COUNTY: TAZEWELL
CONTRACT NO. 89353
CAT NO. 032923-00

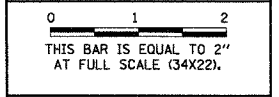
TRAFFIC SIGNAL LEGEND

PROPOSED	EXISTING	
		CONTROLLER
		SERVICE INSTALLATION
		SIGNAL HEAD
		SIGNAL HEAD WITH BACKPLATE
		SIGNAL HEAD PEDESTRIAN
		SIGNAL POST
		MAST ARM ASSEMBLY AND POLE, STEEL
		HANDHOLE
		DOUBLE HANDHOLE
		G.S. CONDUIT IN TRENCH OR PUSHED
		LENGTH-CONSTRUCTION SIZE-TYPE
		PEDESTRIAN PUSH BUTTON DETECTOR
		VIDEO DETECTION CAMERA
		EMERGENCY VEHICLE DETECTOR AND BEACON
		LUMINAIRE



REVISIONS

NUMBER	BY	DATE



CITY OF PEKIN, IL
INTERSECTION RECONSTRUCTION
14TH ST. & PARK AVE.

TRAFFIC SIGNAL PLAN

REF	STATION & OFFSET
MA-1	26+82, 41.0' RT.
MA-2	26+02, 38.6' RT.
MA-3	26+05, 52.8' LT.
MA-4	26+80, 36.4' LT.

GENERAL NOTES

- ALL TRAFFIC SIGNALS SHALL HAVE 12" LED LENSES
- THE RED SECTIONS OF THE SIGNAL HEADS SHARING THE SAME MAST ARM SHALL BE LEVEL WITH ONE ANOTHER AND MAINTAIN A 16' MINIMUM CLEARANCE FROM THE HIGHEST POINT OF THE ROADWAY.
- ALL TRAFFIC SIGNAL HEAD BRACKETS ARE TO BE UNPAINTED ALUMINUM
- THE HANDHOLE SHALL BE CONSTRUCTED SO THAT THE TOP OF THE FRAME WILL BE FLUSH WITH THE SURFACE OF THE MEDIAN, SIDEWALK, OR GROUND LINE.
- THE LOCATION OF ALL UTILITIES SHALL BE FIELD VERIFIED BY THE CONTRACTOR BEFORE THE INSTALLATION OF ANY TRAFFIC SIGNAL COMPONENTS.
- COILABLE POLYETHYLENE DUCT MAY BE SUBSTITUTED FOR PVC CONDUIT PUSHED OR TRENCHED.
- THE TRAFFIC SIGNAL CONTROLLER SHALL BE ORIENTED SO THAT THE DOOR IS FACING AWAY FROM TRAFFIC.
- ALL ITEMS REMOVED SHALL BE RETURNED TO THE CITY OF PEKIN
- THE CONTRACTOR SHALL BE RESPONSIBLE FOR LOCATING ALL EXISTING AND PROPOSED CITY AND STATE OWNED TRAFFIC SIGNAL AND LIGHTING FACILITIES.
- THE TRAFFIC SIGNAL CONTROLLER SHALL BE LOCATED AT A HIGHER ELEVATION THAN THE HANDHOLE TO PREVENT WATER INTRUSION.
- ALL TRAFFIC SIGNAL HARDWARE SHALL BE GROUNDED IN ACCORDANCE WITH NEC REQUIREMENTS (MAST ARMS, HANDHOLE LIDS AND RINGS, TRAFFIC SIGNAL POSTS).

© Copyright CMT, Inc.

CMT
CRAWFORD, MURPHY & TILLY, INC.
CONSULTING ENGINEERS
License No. 084-000613

DESIGN BY:	R.M.M.
DRAWN BY:	R.S.S.
CHECKED BY:	E.J.H.
APPROVED BY:	
DATE:	10/12/05
JOB No:	05069-02-00

SHEET 15 OF 17 SHEET