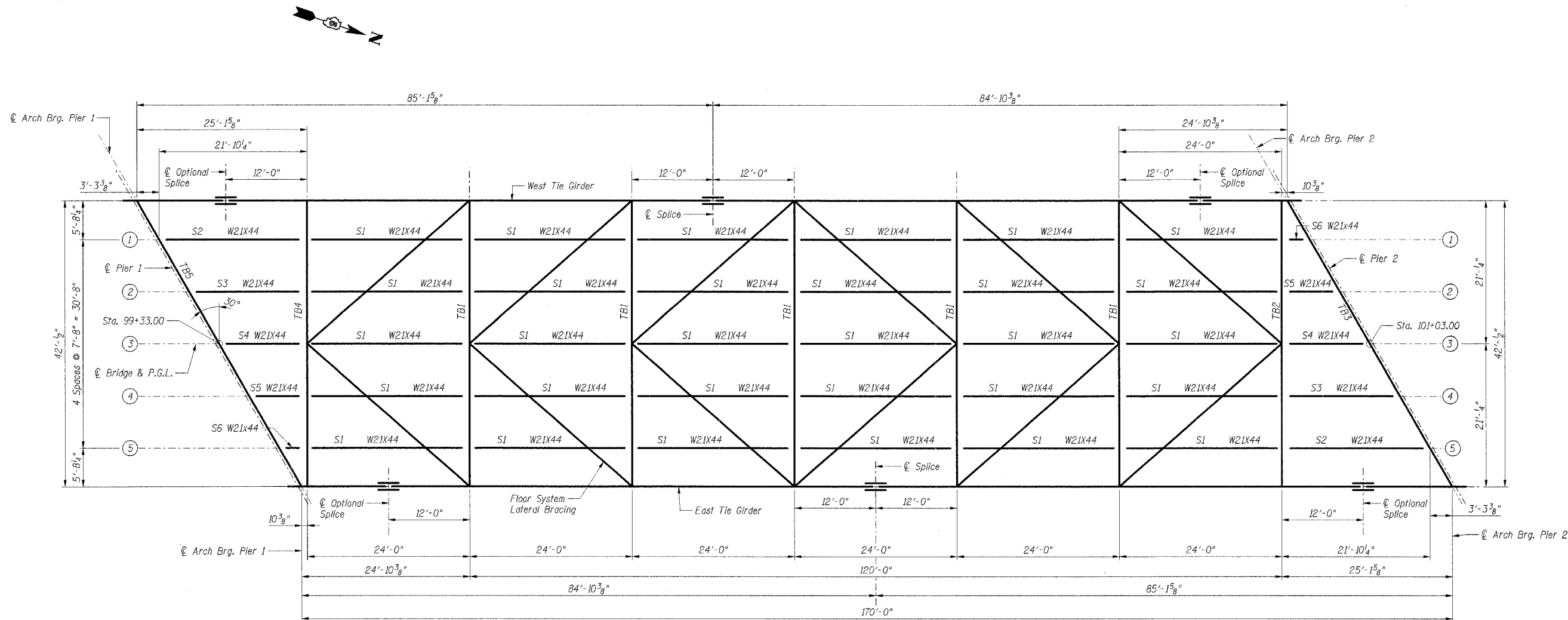


FAU RTE	SECTION	COUNTY	TOTAL SHEETS	SHEET NO.
7000	02-00212-00-BR	VERMILION	59	31
FROM STA. 96+00.00		TO STA. 103+10.10		
FED. ROAD DIST. NO.	ILLINOIS	FED. AID PROJECT		

CONTRACT NO. 91285



**FRAMING PLAN - MAIN SPAN**

ROSSPF

\\FRP005\FY.DGN, \\TTBG0023.DGN  
12-07-2005, 13:12:49  
S:\DOCUMENT\02336902\STRUCT\02\FRP005.DGN

**SHT. S-15 OF 40**

REVISIONS	
NAME	DATE

CITY OF DANVILLE, ILLINOIS  
HUNGRY HOLLOW ROAD BRIDGE

**STRUCTURAL STEEL FRAMING  
PLAN & DETAILS  
MAIN SPAN**

SCALE: DATE 12/06/05

DRAWN BY LAR  
CHECKED BY JRH

**TENG**

TENG & ASSOCIATES, INC.  
ENGINEERS/ARCHITECTS/PLANNERS  
306 N. WASHINGTON AVE. DEERFIELD, IL 60015  
TELEPHONE 848-8800

- Notes:
- Members designated N.T.R. shall conform to the Supplemental Requirements for Notch Toughness (Zone 2).
  - For limits of painting see General Notes on Sheet S-03.
  - For weights of structural steel see General Notes on Sheet S-03.